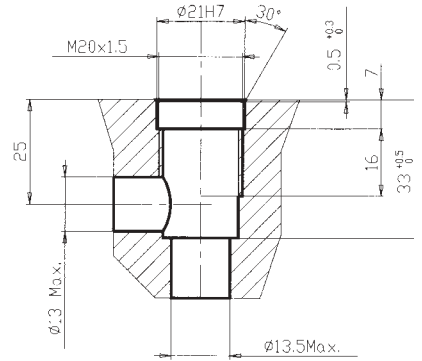
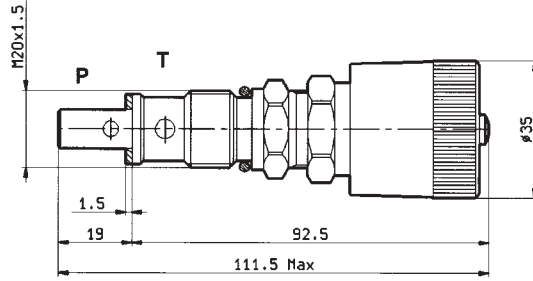
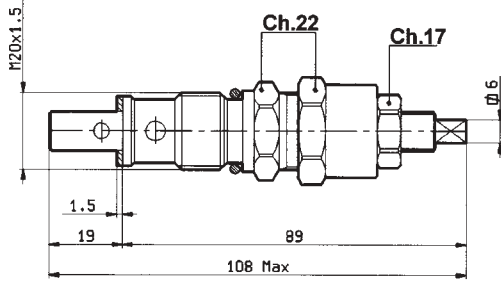


Codice Code	Q max. lt/min.	P max. Bar	Attacchi Port size	CAVITA CAVITY
LPC 7	60	300	M20x1,5	n°112

Versione V



Codice ordinazione Order code	Peso Weight Kg.	Codice ordinazione Order code Versione V	Peso Weight Kg.	Campo di taratura Pressure range Bar	Coppia di serraggio Installation torque Nm
LPC7/70 LPC7/150 LPC7/210 LPC7/300	0,156	LPC7V/70 LPC7V/150 LPC7V/210 LPC7V/300	0,206	0 > 70 15 > 150 35 > 210 120 > 300	46 > 51

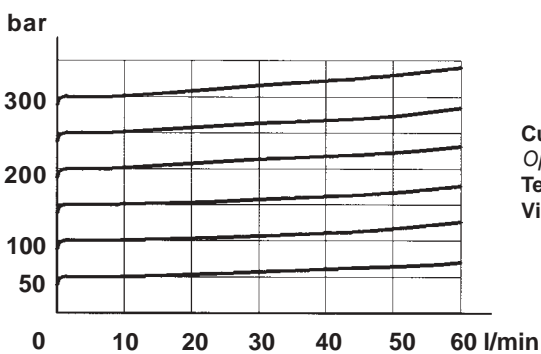
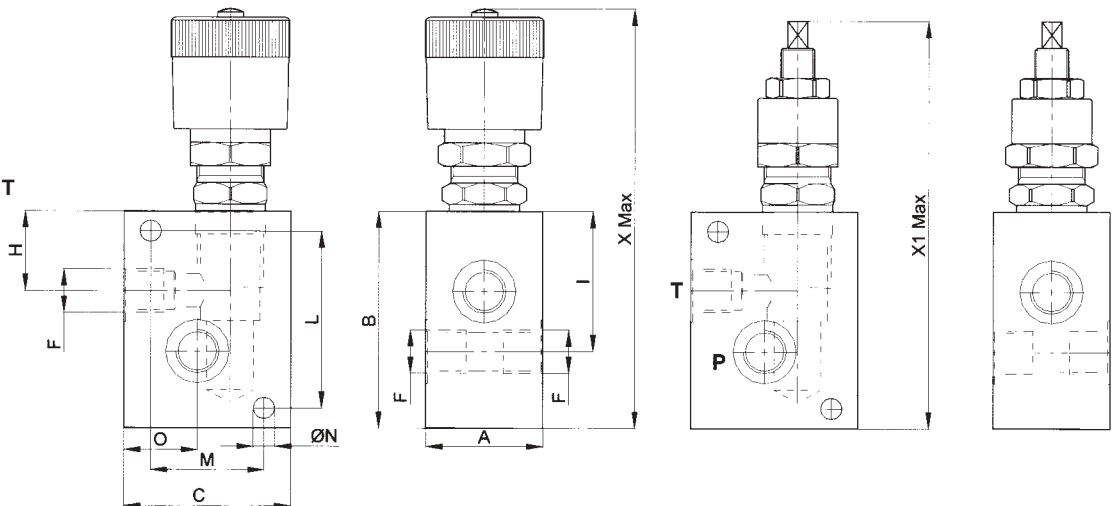
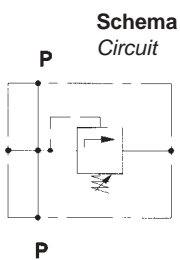
Rondella rame, fornita su richiesta.  
Copper washer, on request

VALVOLA IN LINEA - LINE MOUNTED VERSION

Codice Code	A m/m	C m/m	B m/m	Attacchi Port size ØF BSPP	H m/m	I m/m	L m/m	M m/m	O m/m	ØN m/m	X m/m	X1 m/m	Peso Weight Kg
LPC7.../C14	35	50	65	1/4"	24	48	53	34	22	6,5	126,5	123	0,407
LPC7.../C38	35	50	65	3/8"	24	48	53	34	20	6,5	126,5	123	0,400
LPC7.../C12	35	50	65	1/2"	24	48	53	34	18	6,5	126,5	123	0,381

LPC7V.../C..

Codice di ordinazione per versione a volantino  
Ordering code for version with wheel



Curve di apertura  
Opening curves  
Temp.olio 30°C-  
Viscosità 33 Cst/40°C

