

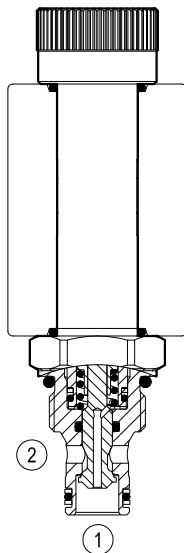
## Solenoid operated valves direct acting poppet 2-way double lock normally closed

Common cavity, Size 08

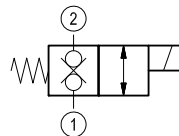


VEDT-08A-A-16-NC

OD.11.31.18 - 6Y - 00



Version 31



### General

Weight	kg (lbs)	0.22 (0.48)
Installation orientation		Optional
Ambient temperature range	°C (°F)	-30 to 60 (-22 to 140) - coil 30W -30 to 80 (-22 to 176) - coil 26W

### Hydraulic

Max. operating pressure	bar (psi)	250 (3600)
Max. flow	l/min. (gpm)	25 (7)
Max. internal leakage	drops/min.	20
Fluid temperature range	°C (°F)	-20 to 80 (-4 to 176)
Response time	ms.	40-60 at nominal flow (oil at 46 cSt)
Fluids		Mineral-based or synthetics with lubricating properties at viscosities of 20 to 380 mm <sup>2</sup> /s (cSt)
Installation torque	Nm (ft-lbs)	34-41 (25-30)
Recommended degree of fluid contamination		Nominal value max. 10µm (NAS 8) ISO 4406 19/17/14
Cavity		CA-08A-2N see RE 18325-70
Lines bodies and standard assemblies		Please refer to section "Hydraulic integrated circuit" or consult factory
Seal kit	code material no.	RG08A2010530100 R901101544
Seal kit coil	code material no.	RG16A1PMVQ0010 R934003962
Other technical data		See data sheet RE 18350-50

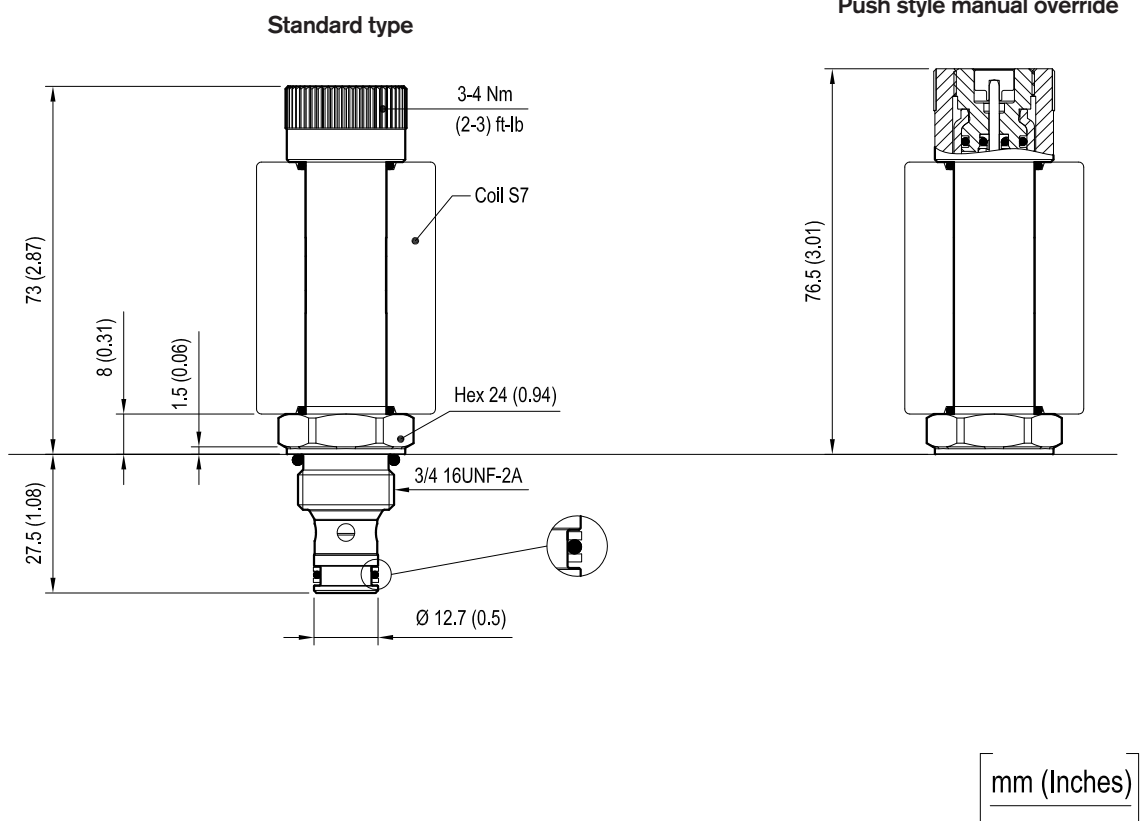
### Electrical

Type of voltage		DC voltage
Coil type		S7
Supply voltage		See data sheet RE 18325-90
Power consumption	W	30 or 26
Duty cycle coil	%	See performance graphs
Type of protection		See data sheet RE 18325-90
Nominal voltage	coil 26W	-15% +10%
Nominal voltage	coil 30W	-10% +10%

**Note: Coils must be ordered separately.**

## Dimensions

Solenoid operated valves poppet 2-way double lock normally closed

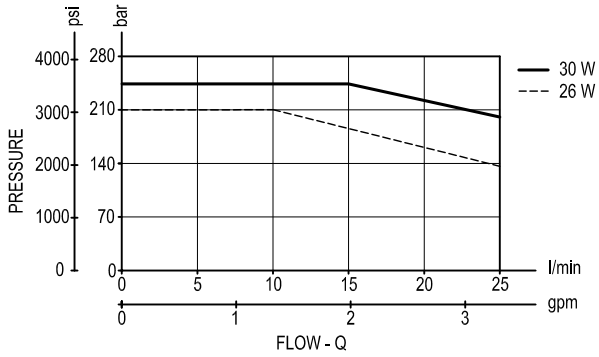


# Performance graphs

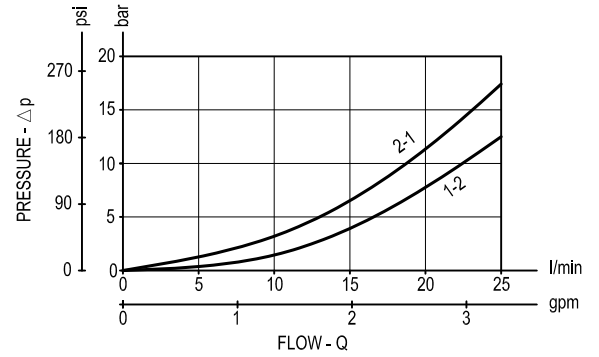
## Performance limits

(Hot coil at nominal voltage)

version 31



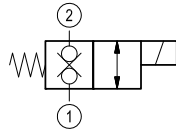
## Characteristic curves



**Ordering code**

OD.11	*	18	*	00
-------	---	----	---	----

Solenoid operated valves  
poppet 2-way double lock  
normally closed

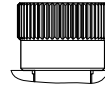


= 31

Common cavity: CA-08A-2N

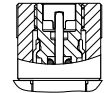
standard type

6A =



Push style manual override

6B =



Type	Material number
OD1131186A0000	R934003624
OD1131186B0000	R934003625

Type	Material number