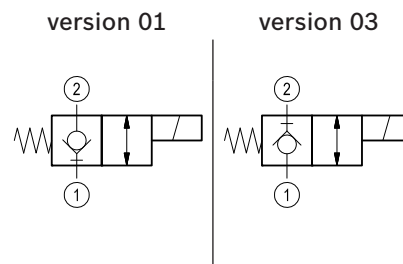
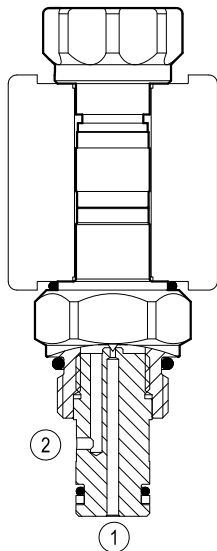


Solenoid operated valves direct acting poppet 2-way normally closed

Common cavity, Size 08

VED-8I-NC

OD.11 - X - 18 - Y - 00



General

Weight	kg (lbs)	0.13 (0.29)
Installation orientation		Optional
Ambient temperature range	°C (°F)	-30 to 60 (-22 to 140)

Hydraulic

Max. operating pressure	bar (psi)	350 (5000)
Rated flow	l/min. (gpm)	1.5 (0.4)
Max. internal leakage	drops/min.	20
Fluid temperature range	°C (°F)	-20 to 80 (-4 to 176)
Fluids		Mineral-based or synthetics with lubricating properties at viscosities of 20 to 380 mm ² /s (cSt)
Installation torque	Nm (ft-lbs)	39-51 (29-38)
Filtration		Nominal value max. 25µm (NAS 8) ISO 4406 19/17/14
Cavity		CA-08A-2N see RE 18325-70
Seal kit	code material no.	RG08A2010520100 R901101437
Seal kit coil	code material no.	RG1211PNBR7010 R934003957
Other technical data		See data sheet RE 18350-50

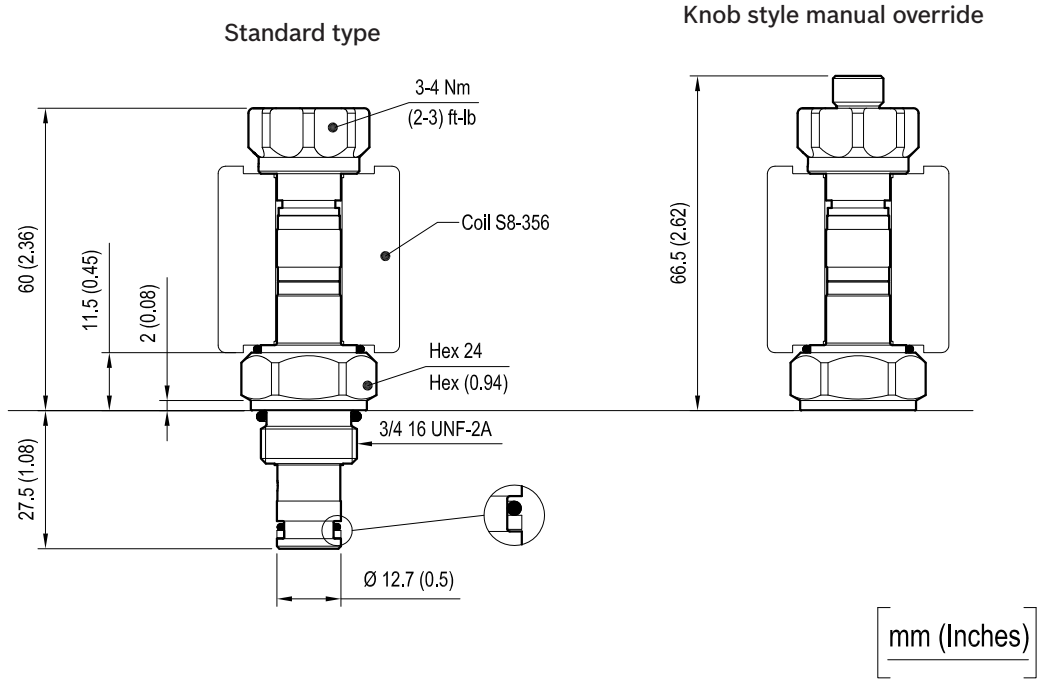
Electrical

Type of voltage		DC voltage
Coil type		S8-356 see RE 18325-90
Supply voltage		See data sheet RE 18325-90
Nominal voltage		± 10%
Power consumption	W	20
Duty cycle coil	%	See performance graphs
Type of protection		See data sheet RE 18325-90

Note: Coils must be ordered separately.

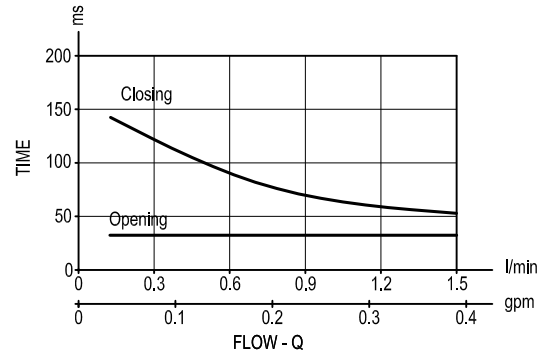
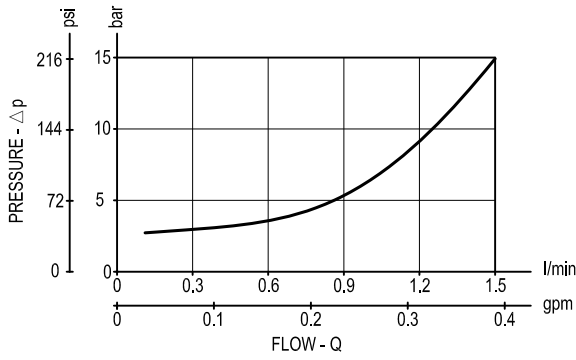
Dimensions

Solenoid operated valves poppet 2-way normally closed

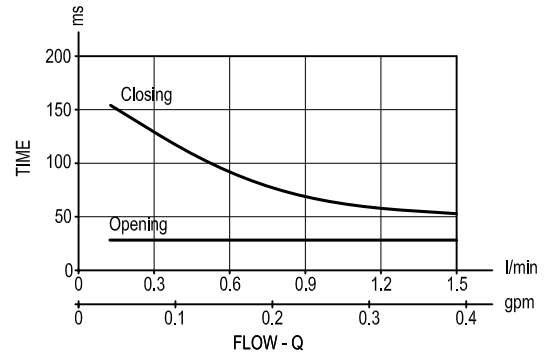
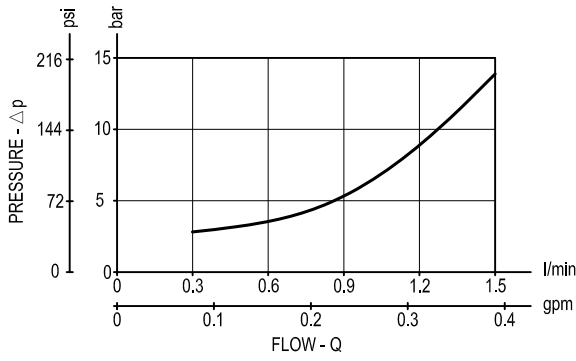


Performance graph

Version 01



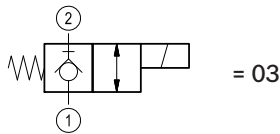
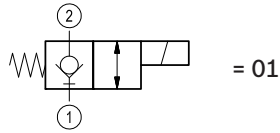
Version 03



Ordering code

OD.11	*	18	*	00
-------	---	----	---	----

Solenoid operated valves
poppet 2-way normally
closed



standard type



Knob style manual override



Common cavity: CA-08A-2N

Type	Material number	Type	Material number
OD110118310000	R901090901		
OD110118320000	R901090903		
OD110318310000	R901090909		
OD110318320000	R901090910		