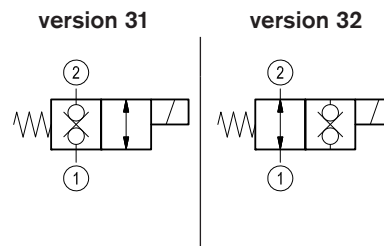
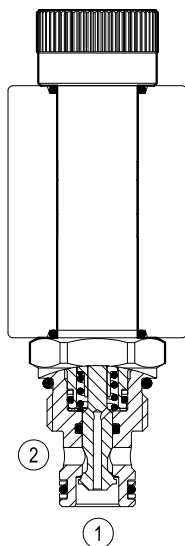


Solenoid operated valves direct acting poppet 2-way double lock

Hydac cavity interchange, 06020

VEDT-08F-A-16

OD.11 - X - 40 - Y - 00



General

| | | |
|---------------------------|----------|--|
| Weight | kg (lbs) | 0.22 (0.48) |
| Installation orientation | | Optional |
| Ambient temperature range | °C (°F) | -30 to 60 (-22 to 140) - coil 30W -30 to 80 (-22 to 176) - coil 26W |

Hydraulic

| | | |
|---|-------------------|--|
| Max. operating pressure | bar (psi) | 250 (3600) |
| Max. flow | l/min. (gpm) | 25 (7) |
| Max. internal leakage | drops/min. | 20 |
| Fluid temperature range | °C (°F) | -20 to 80 (-4 to 176) |
| Response time | ms. | 40-60 at nominal flow (oil at 46 cSt) |
| Fluids | | Mineral-based or synthetics with lubricating properties at viscosities of 20 to 380 mm ² /s (cSt) |
| Installation torque | Nm (ft-lbs) | 34-41 (25-30) |
| Recommended degree of fluid contamination | | Nominal value max. 10µm (NAS 8) ISO 4406 19/17/14 |
| Special cavity | | Hydac 06020 |
| Lines bodies and standard assemblies | | Please refer to section "Hydraulic integrated circuit" or consult factory |
| Seal kit | code material no. | RG40E201053010 R934003587 |
| Seal kit coil | code material no. | RG16A1PMVQ0010 R934003962 |
| Other technical data | | See data sheet RE 18350-50 |

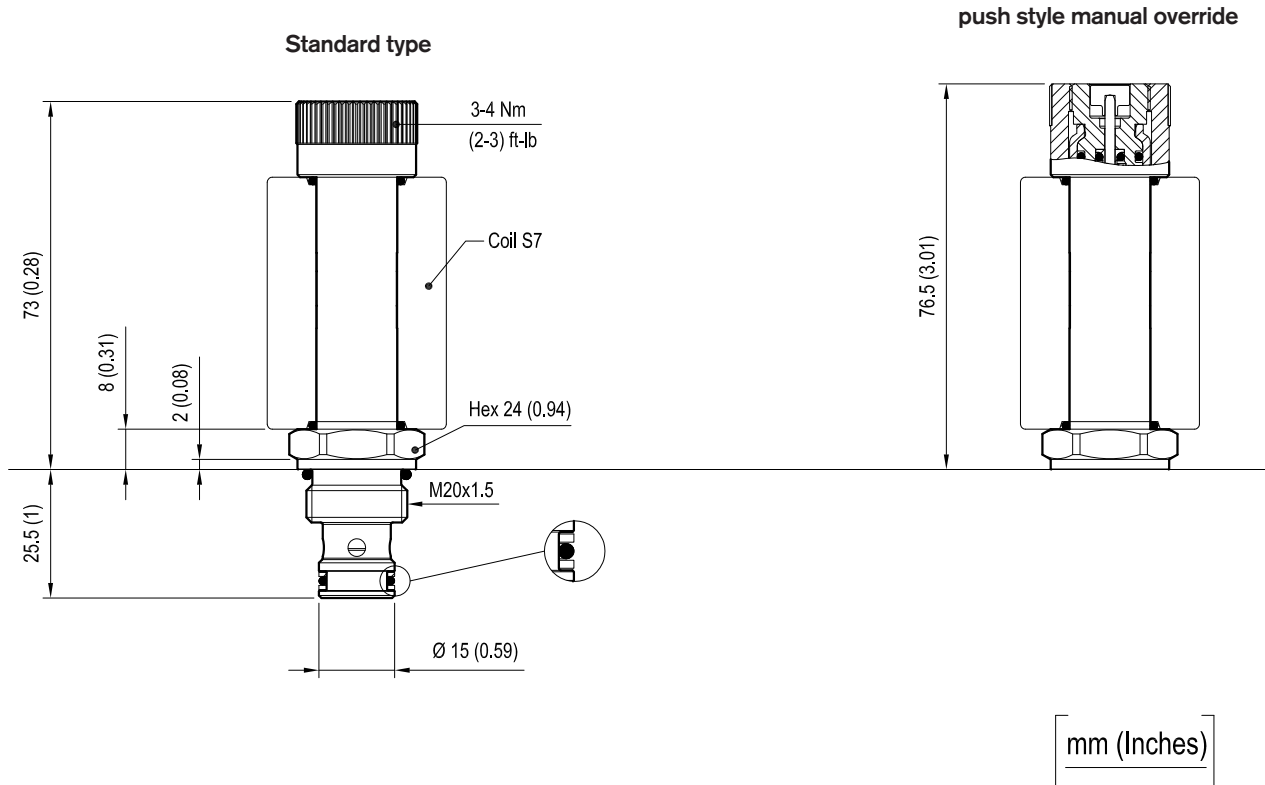
Electrical

| | | |
|--------------------|----------|----------------------------|
| Type of voltage | | DC voltage |
| Coil type | | S7 |
| Supply voltage | | See data sheet RE 18325-90 |
| Power consumption | W | 30 or 26 |
| Duty cycle coil | % | See performance graphs |
| Type of protection | | See data sheet RE 18325-90 |
| Nominal voltage | coil 26W | -15% +10% |
| Nominal voltage | coil 30W | -10% +10% |

Note: Coils must be ordered separately.

Dimensions

Solenoid operated valves poppet 2-way double lock - Special cavity

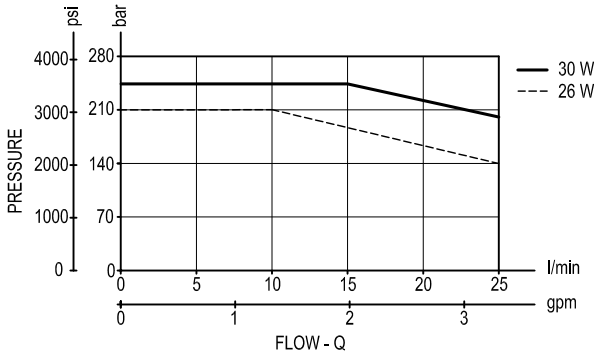


Performance graphs

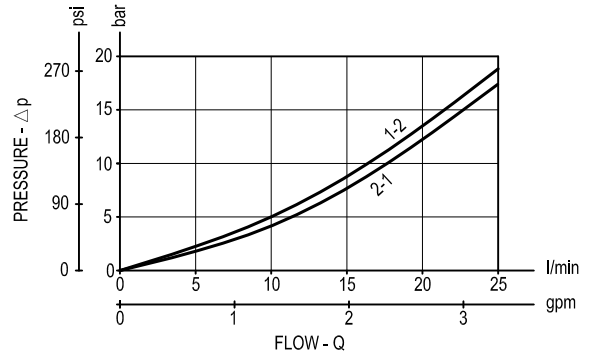
Performance limits

(Hot coil at nominal voltage)

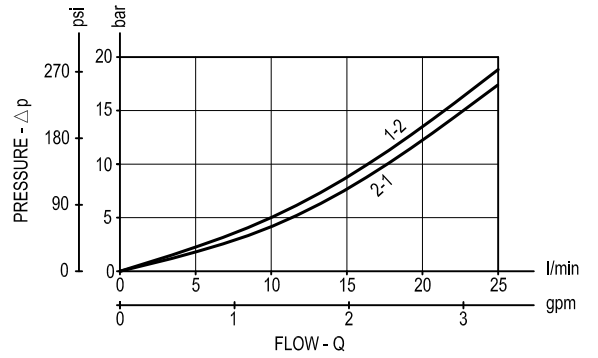
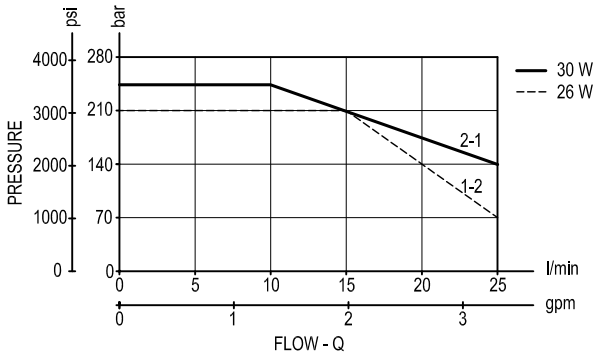
version 31 (NC)



Characteristic curves



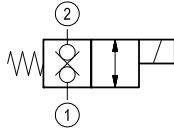
version 32 (NA)



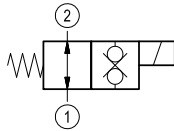
Ordering code

| | | | | |
|-------|---|----|---|----|
| OD.11 | * | 40 | * | 00 |
|-------|---|----|---|----|

Solenoid operated valves poppet
2-way double lock normally
closed and normally open



= 31

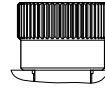


= 32

Special cavity: CA-08F-2N

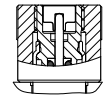
standard type

6A =



Push style manual override

6B =



| Type | Material number |
|----------------|-----------------|
| OD1131406A0000 | R934003630 |
| OD1131406B0000 | R934003631 |
| OD1132406A0000 | R934003628 |
| OD1132406B0000 | R934003629 |
| | |
| | |
| | |
| | |
| | |

| Type | Material number |
|------|-----------------|
| | |
| | |
| | |
| | |
| | |
| | |
| | |
| | |
| | |