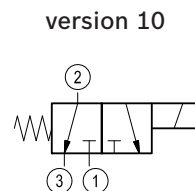
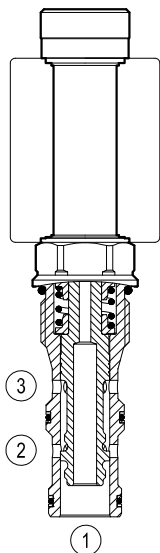


# Solenoid operated valves direct acting spool 3-way 2-position

Common cavity, Size 12

VEDS-12A-32

OD.13 - X - 12 - Y - 00



## General

Weight	kg (lbs)	0.39 (0.86)
Installation orientation		Optional
Ambient temperature range	°C (°F)	-30 to 60 (-22 to 140)

## Hydraulic

Max. operating pressure	bar (psi)	315 (4500)
Max. operating pressure port 1	bar (psi)	210 (3000)
Max. flow	l/min.(gpm)	60 (16)
Max. internal leakage (*)	cm <sup>3</sup> /min. (cu.in/min.)	180 (11)
Fluid temperature range	°C (°F)	-20 to 80 (-4 to 176)
Fluids		Mineral-based or synthetics with lubricating properties at viscosities of 20 to 380 mm <sup>2</sup> /s (cSt)
Installation torque	Nm (ft-lbs)	81-87 (60-64)
Filtration		Nominal value max. 10µm (NAS 8) ISO 4406 19/17/14
Cavity		CA-12A-3N see RE 18325-70
Seal kit	code material no.	RG12A3010520100 R930000941
Seal kit coil	code material no.	RG19A1PNBR7010 R934003964
Other technical data		See data sheet RE 18350-50

(\*) Measured at 210 bar (3000 psi) (oil at 46 cSt)

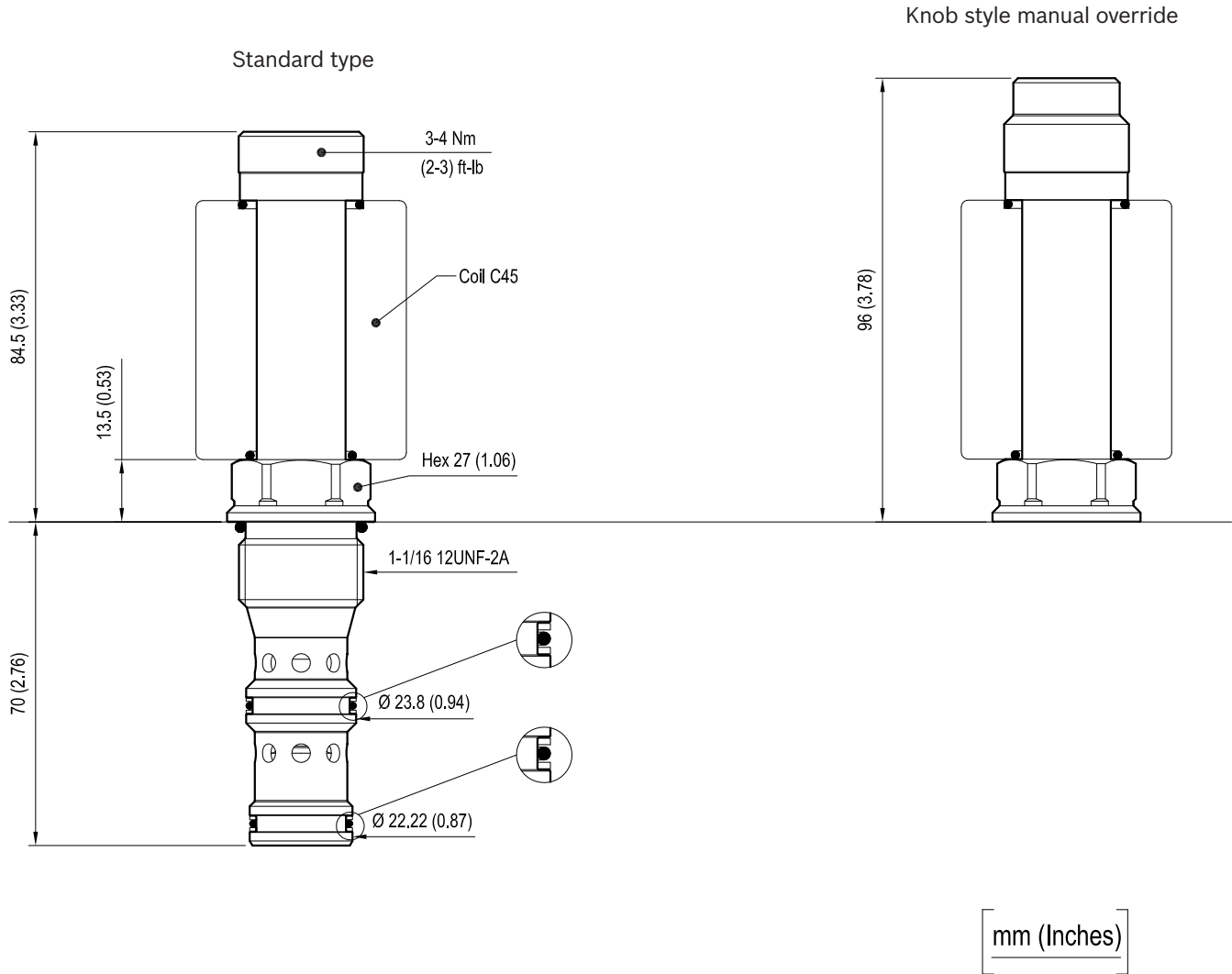
## Electrical

Type of voltage		DC voltage
Coil type		C45
Supply voltage		See data sheet RE 18325-90
Power consumption	W	33
Duty cycle coil	%	100 see RE 18325-90
Type of protection		See data sheet RE 18325-90
Nominal voltage coil 33W		-10%+10%

Note: Coils must be ordered separately.

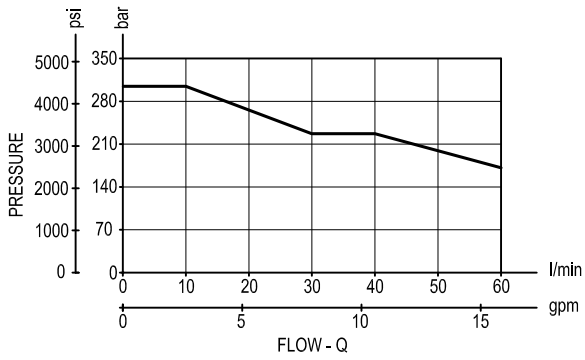
## Dimensions

Solenoid operated valves direct acting spool 3-way 2-position

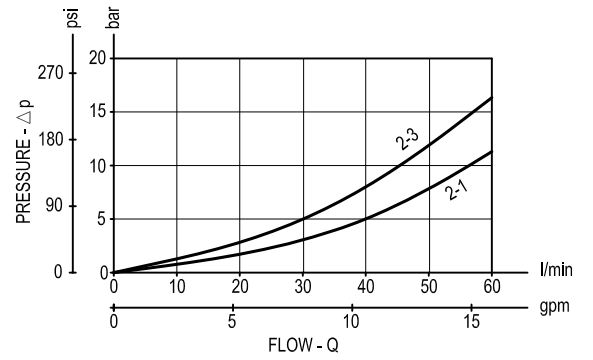


## Performance graphs

Performance limits



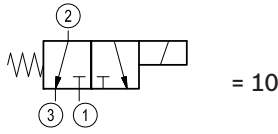
Characteristic curves



### Ordering code

OD.13	*	12	*	00
-------	---	----	---	----

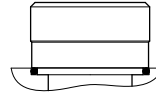
Solenoid operated valves  
spool 3-way 2-position



Common cavity: CA-12A-3N

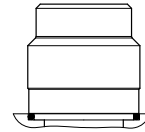
Standard type

1A =



Knob style manual override

1B =



Type	Material number
OD1310121A0000	R934003616
OD1310121B0000	R934003620

Type	Material number