

Solenoid operated valves direct acting spool  
4-way 3-position  
Common cavity, Size 10

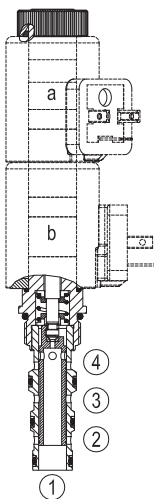
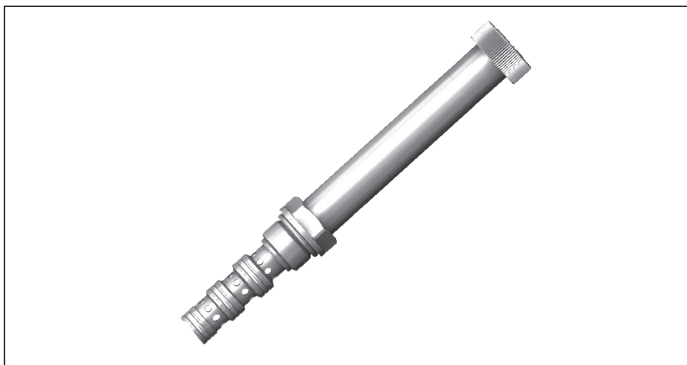
VEDS-10A-43

OD.14 - X - 78 - KK2 - Y - 00

**RE 18324-64**

Edition: 02.2019

Replaces: 05.2016

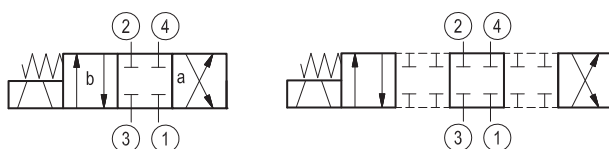


**Technical data**

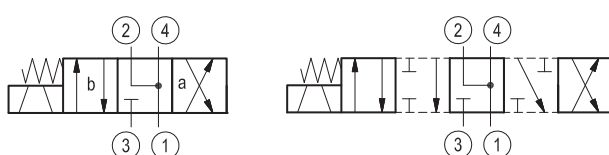
<b>General</b>	
Weight (with coils)	0.85 kg (1.87 lbs)
Installation position	Any
Ambient temperature range	-40 to 110 °C (-40 to 230 °F)
Salt spray test to DIN 50021	720 h
<b>Hydraulic</b>	
Max. operating pressure port 2, 3, 4	350 bar (5075 psi)
Max. operating pressure port 1	250 bar (3625 psi)
Max. flow	35 l/min. (9 gpm)
Max. internal leakage	< 60 ml/min. (with $\Delta p=250$ bar; HLP46, $T_{oil} = 40^{\circ}C$ )
Fluid temperature range	-40 to 80 °C (-40 to 176 °F)
Fluids: Mineral-based or synthetics with lubricating properties at viscosities of 5 to 1000 mm <sup>2</sup> /s (preferably 10 to 100 mm <sup>2</sup> /s)	
Recommended degree of fluid contamination	Nominal value max. 10µm (NAS 8) ISO 4406 19/17/14
Cavity	CA-10A-4N see 18325-70
Seal kit	material no. R961005190
Load cycles	2 Mio.
<b>Electrical</b>	
Type of voltage	DC voltage
Coil type	GZ37 see 18325-90

Note: coils must be ordered separately.

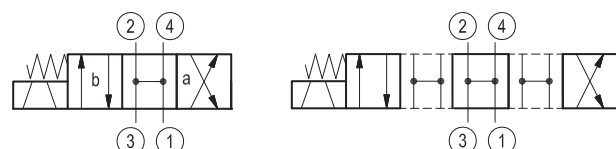
▼ **Version 10**



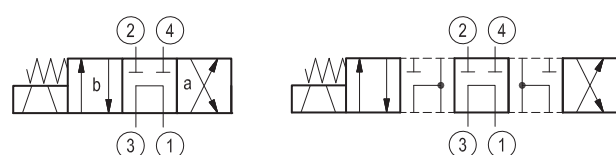
▼ **Version 20**



▼ **Version 40**



▼ **Version 60**



- ① T
- ② A
- ③ P
- ④ B

**Ordering code**

<b>OD14</b>	<b>X</b>	<b>78</b>	<b>KK2</b>	<b>Y</b>	<b>0</b>	<b>0</b>
-------------	----------	-----------	------------	----------	----------	----------

Solenoid operated valves direct acting spool  
4-way 3-position

Version **10**  
Version **20**  
Version **40**  
Version **60**

without manual override **0**  
with pull/push manual override **1**

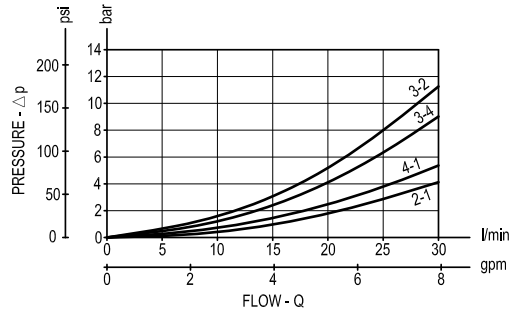
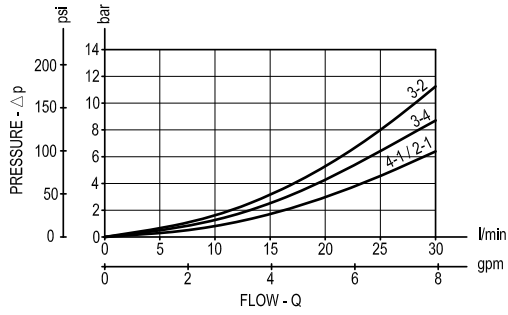
**Preferred types**

Type	Material number
OD141078KK2000	R901237595
OD142078KK2000	R901237594
OD144078KK2000	R901237592
OD146078KK2000	R901237591

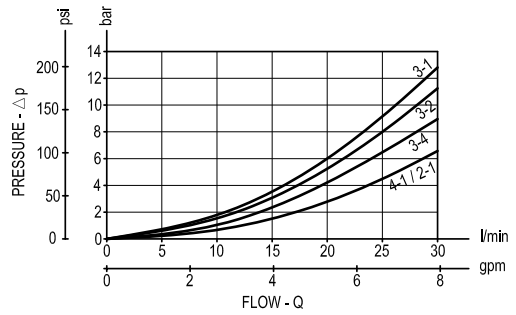
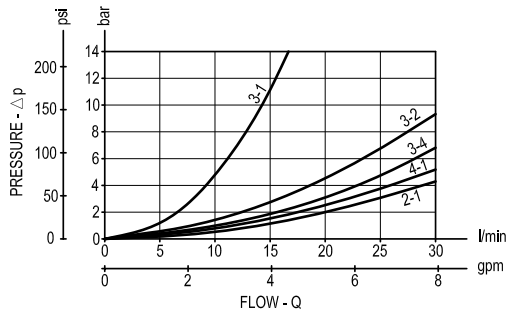
Type	Material number
OD141078KK2100	R901255425
OD142078KK2100	R901255421
OD144078KK2100	R901255423
OD146078KK2100	R901255424

**Characteristic curves**

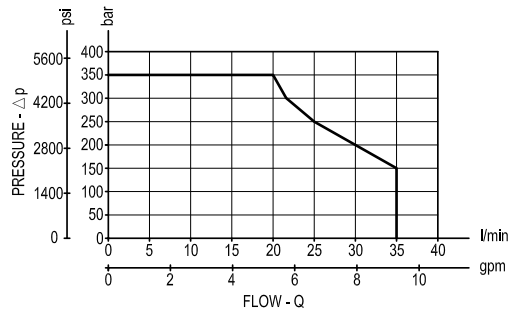
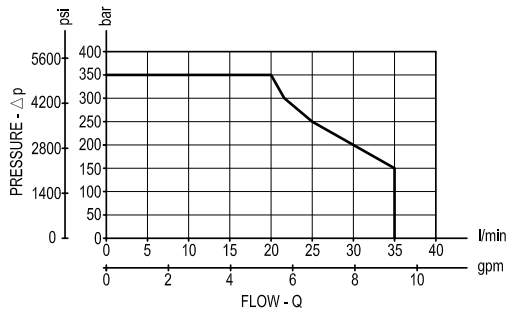
**Version 10** **Version 20**



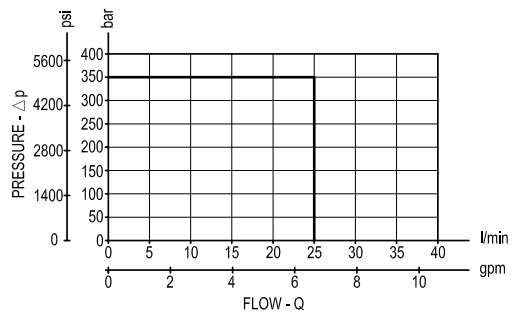
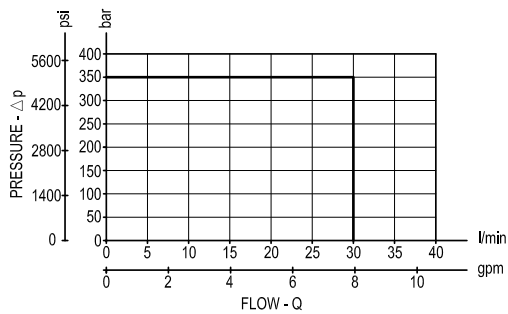
**Version 40** **Version 60**



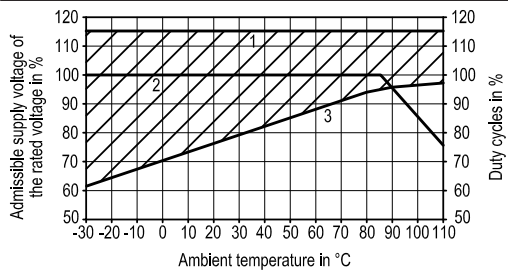
**Version 10 - Limits of performance** **Version 20 - Limits of performance**



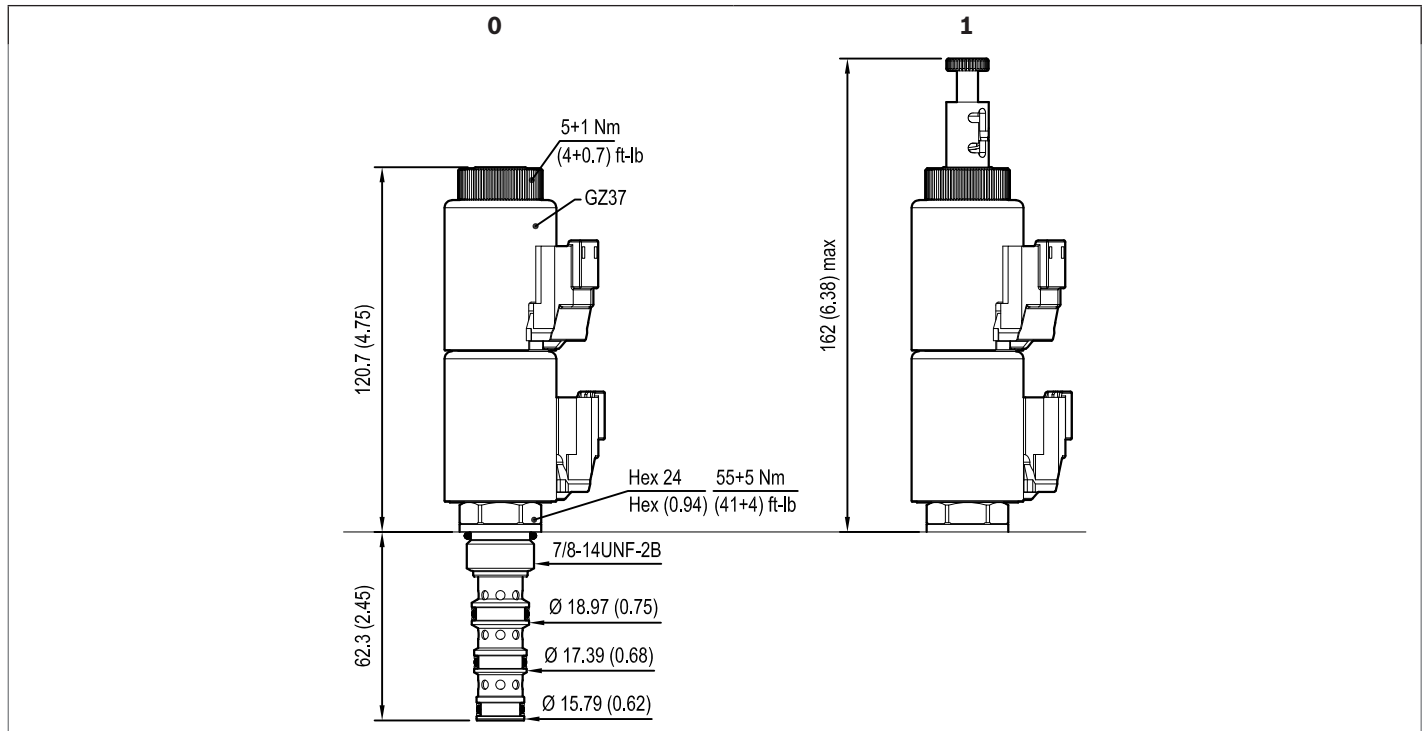
**Version 40 - Limits of performance** **Version 60 - Limits of performance**



**Voltage range and duty cycle depending on the ambient temperature**



- 1 Max. voltage
- 2 Duty cycle
- 3 Min. response voltage
- Admissible supply voltage range

**Dimensions**▼ **Solenoid operated valves direct acting spool 4-way 3-position****Bosch Rexroth Oil Control S.p.A.**

Via Leonardo da Vinci 5  
P.O. Box no. 5  
41015 Nonantola – Modena, Italy  
Tel. +39 059 887 611  
Fax +39 059 547 848  
compact-hydraulics-cv@boschrexroth.com  
www.boschrexroth.com/compacthydraulics

© This document, as well as the data, specifications and other information set forth in it, are the exclusive property of Bosch Rexroth Oil Control S.p.a.. It may not be reproduced or given to third parties without its consent. The data specified above only serve to describe the product. No statements concerning a certain condition or suitability for a certain application can be derived from our information. The information given does not release the user from the obligation of own judgment and verification. It must be remembered that our products are subject to a natural process of wear and aging. Subject to change.