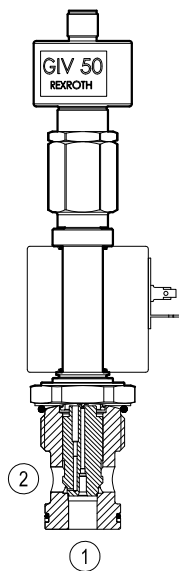
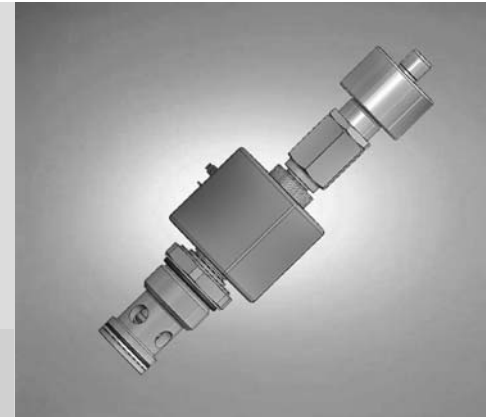


Solenoid operated valves pilot operated poppet 2-way normally closed proximity sensor

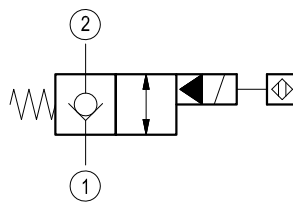
Special cavity, 021-E

VEI-7A-2A-14-NC-S

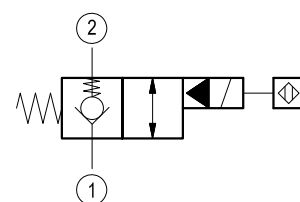
OD.15.05.21.62 - Y - Z



Version 05



Version 85



General

Weight	kg (lbs)	0.9 (2)
Installation orientation		Optional
Ambient temperature range	°C (°F)	-30 to 60 (-22 to 140)

Hydraulic

Max. operating pressure	bar (psi)	250 (3600)
Flow range	l/min.(gpm)	5-150 (1-40)
Max. internal leakage (*)	drops/min.	20
Fluid temperature range	°C (°F)	-20 to 80 (-4 to 176)
Fluids		Mineral-based or synthetics with lubricating properties at viscosities of 15 to 380 mm ² /s (cSt)
Installation torque	Nm (ft-lbs)	80-85 (59-63)
Filtration		Nominal value max. 10µm (NAS 8) ISO 4406 19/17/14
Cavity		021-E see RE 18325-75
Seal kit	code material no.	RG21E201052010 R934003566
Other technical data		See data sheet RE 18350-50

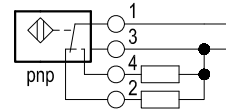
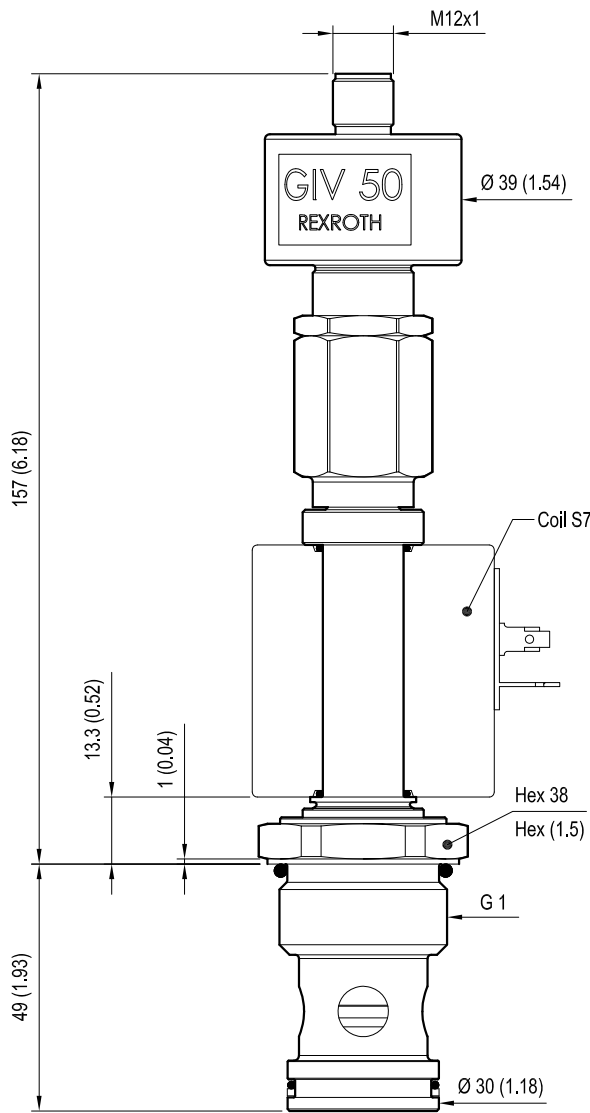
(*) (cSt 46)

Electrical

Type of voltage		DC voltage
Coil type		S7
Supply voltage		See data sheet RE18325-90
Nominal voltage		± 10%
Power consumption	W	30
Duty cycle	%	100 see RE 18325-90
Type of protection		See data sheet RE 18325-90

Dimensions

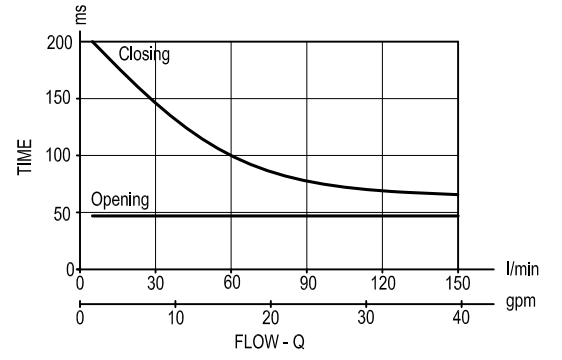
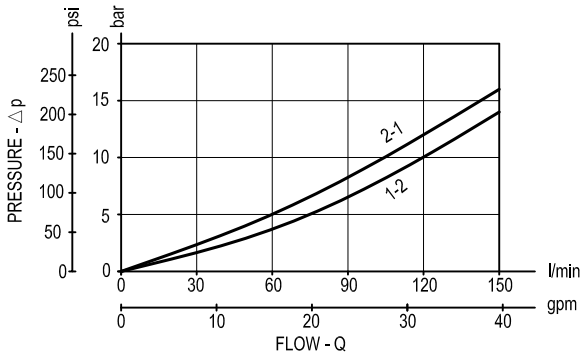
Solenoid operated valves poppet 2-way normally closed proximity sensor



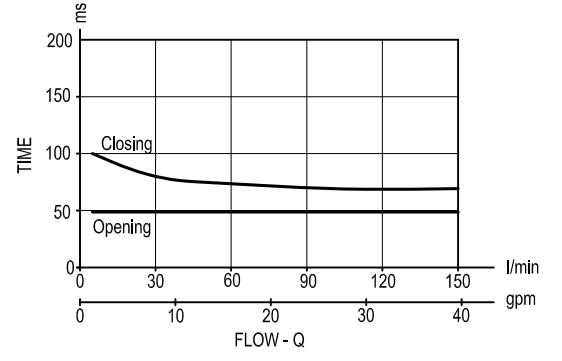
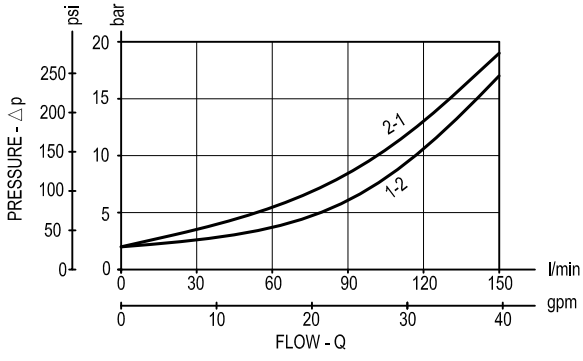
mm (Inches)

Performance graphs

Version 05



Version 85



Ordering code

OD.15	05	21	62	Y	Z
--------------	-----------	-----------	-----------	----------	----------

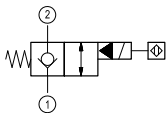
Solenoid operated valves
poppet 2-way normally closed
proximity sensor

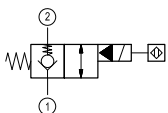
Special cavity: 021-E

OB = 12 V DC for Y= 85

OC = 24 V DC for Y= 05 or 85

Note: please consult factory for different voltages.

05 = 

85 = 

Type	Material number	Type	Material number
OD1505216205OC	R934001213		
OD1505216285OB	R934001229		
OD1505216285OC	R934001224		