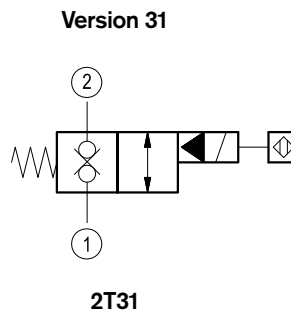
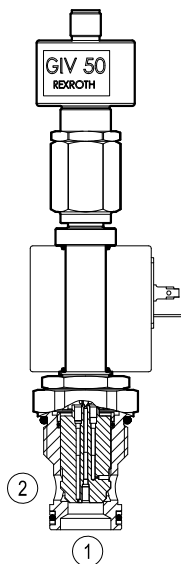


Solenoid operated valves poppet 2-way normally closed proximity sensor

Common cavity, Size 16

VEI-7A-2T-14-NC-S-M

OD.15.31.75.62.05 - Z



General

Weight	kg (lbs)	0.9 (2)
Installation orientation		Optional
Ambient temperature range	°C (°F)	-30 to 60 (-22 to 140)

Hydraulic

Max. operating pressure	bar (psi)	250 (3600)
Flow range	l/min.(gpm)	4.5-200 (1.2-53)
Max. internal leakage (*)	drops/min.	15
Fluid temperature range	°C (°F)	-20 to 80 (-4 to 176)
Fluids		Mineral-based or synthetics with lubricating properties at viscosities of 15 to 380 mm ² /s (cSt)
Installation torque	Nm (ft-lbs)	80-85 (59-63)
Filtration		Nominal value max. 10µm (NAS 8) ISO 4406 19/17/14
Cavity		CA-16A-2N see RE 18325-70
Seal kit	code material no.	RG16A2010530100 R930003262
Other technical data		See data sheet RE 18350-50

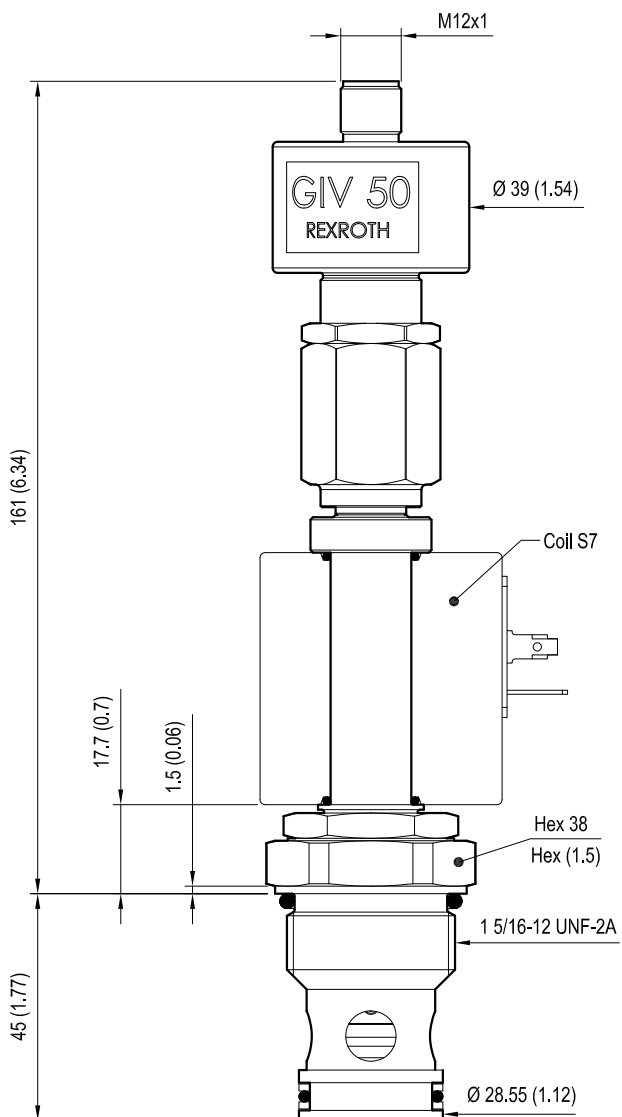
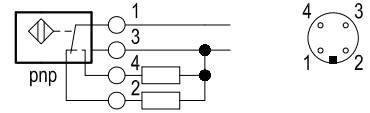
(*) (cSt 46)

Electrical

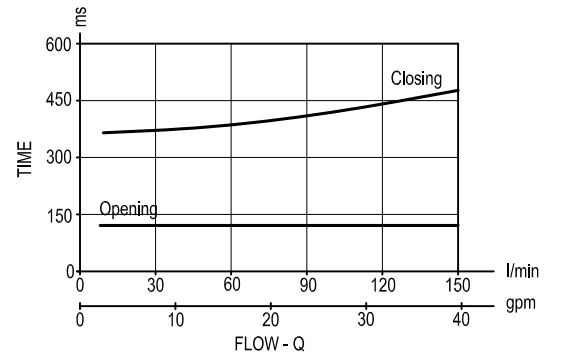
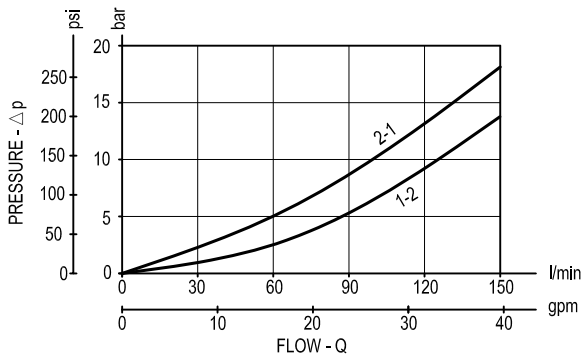
Type of voltage		DC voltage
Coil type		S7
Supply voltage		See data sheet RE18325-90
Nominal voltage		± 10%
Power consumption	W	30
Duty cycle	%	100 see RE 18325-90
Type of protection		See data sheet RE 18325-90

Dimensions

Solenoid operated valves poppet 2-way normally closed proximity sensor



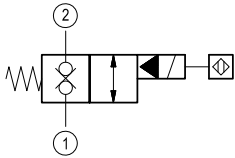
Performance graphs



Ordering code

OD.15	31	75	62.05	Z
--------------	-----------	-----------	--------------	----------

Solenoid operated valves
poppet 2-way normally closed
proximity sensor



OC = 24 V DC

Note: please consult factory for
different voltages.

Common cavity: CA-16A-2N

Type	Material number	Type	Material number
OD1531756205OC	R934001234		