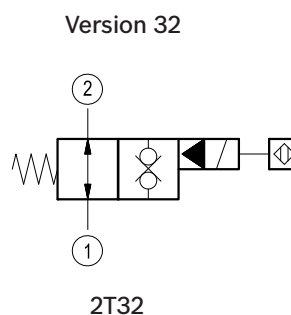
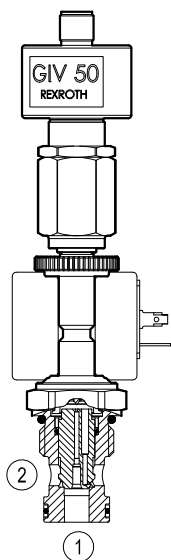


Solenoid operated valves pilot operated poppet 2-way normally open double lock proximity sensor Special cavity, 017-E



VEI-8A-2T-09-NA-S-M-NSS

OD.15.32.17.1D.S2 - Z



General

Weight	kg (lbs)	0.75 (1.7)
Installation orientation		Optional
Ambient temperature range	°C (°F)	-30 to 60 (-22 to 140)

Hydraulic

Max. operating pressure	bar (psi)	350 (5075)
Flow range	l/min.(gpm)	2.5-70 (0.66-18)
Max. internal leakage	drops/min.	15
Fluid temperature range	°C (°F)	-20 to 80 (-4 to 176)
Fluids		Mineral-based or synthetics with lubricating properties at viscosities of 15 to 380 mm ² /s (cSt)
Installation torque	Nm (ft-lbs)	50-55 (37-41)
Filtration		Nominal value max. 10µm (NAS 8) ISO 4406 19/17/14
MTTFd		150 years see RE 18350-51
Cavity		017-E see RE 18325-75
Seal kit	code	RG17E201053010
	material no.	R934003563
Other technical data		See data sheet RE 18350-50

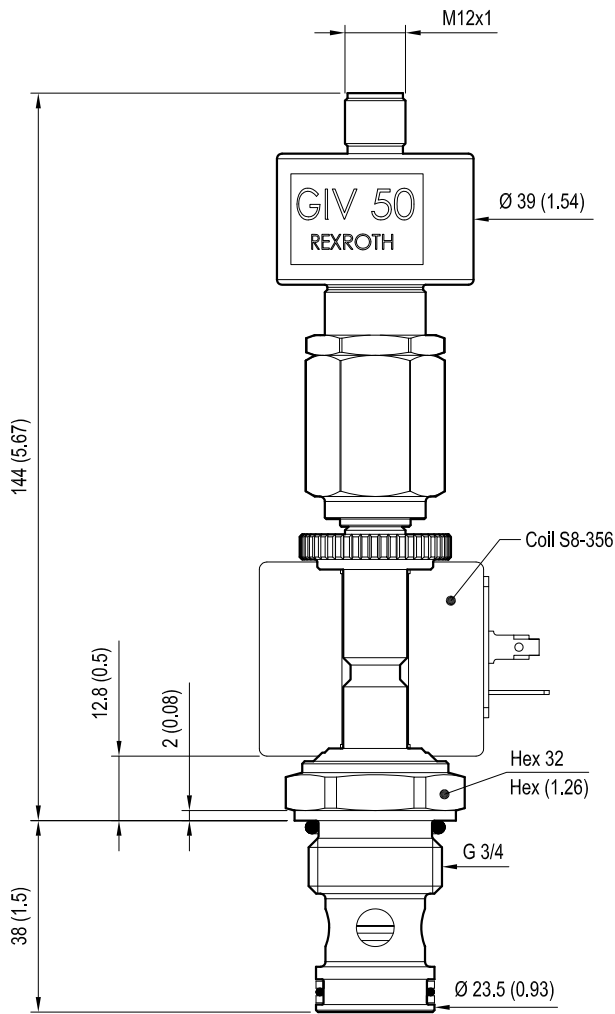
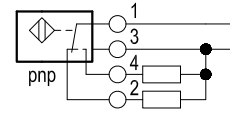
Electrical

Type of voltage	DC voltage
Coil type	S8-356
Supply voltage	See data sheet RE18325-90
Nominal voltage	± 10%
Power consumption	W 20
Duty cycle	% 100 see RE 18325-90
Type of protection	See data sheet RE 18325-90

Please consider that a proper function of the valve is guaranteed only if the position of the monitor is not modified; each cartridge is provided of a torque confirmation mark, intended as anti-tampering device.

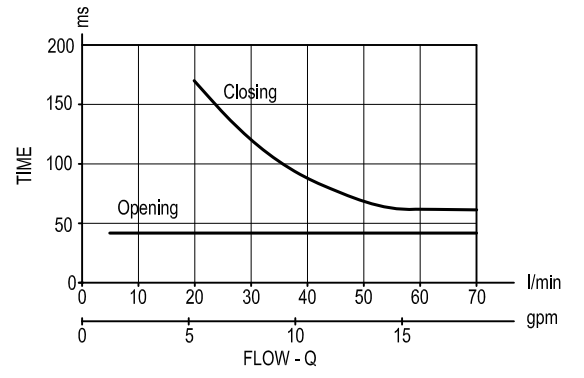
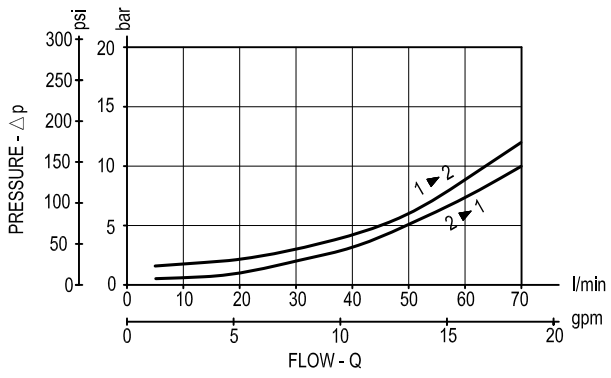
Dimensions

Solenoid operated valves poppet 2-way normally open double lock proximity sensor

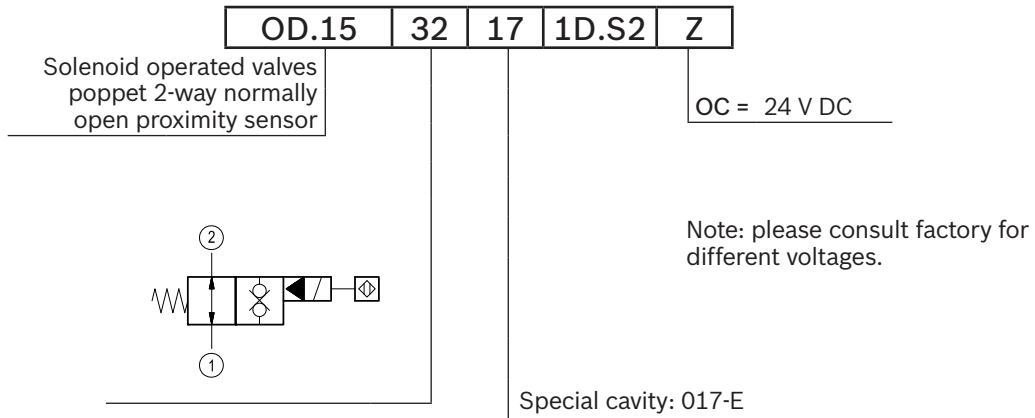


[mm (Inches)]

Performance graphs



Ordering code



Type	Material number	Type	Material number
OD1532171DS2OC	R934001235		