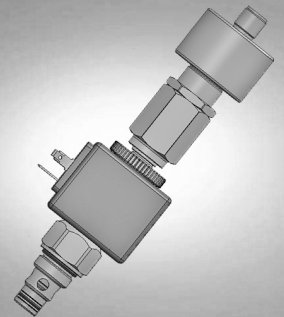


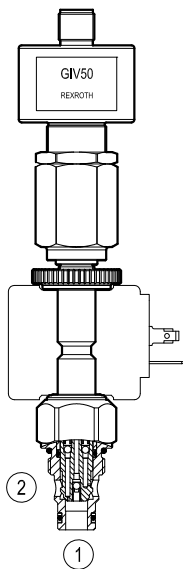
Solenoid operated valves pilot operated poppet 2-way normally open proximity sensor

Common cavity, Size 08

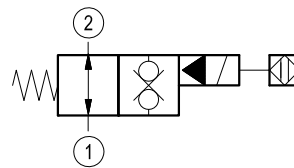


VEI-8A-2T-06-NA-S-M-NSS

OD.15.32.18.1D.S2 - Z



Version 32



General

Weight	kg (lbs)	0.75 (1.7)
Installation orientation		Optional
Ambient temperature range	°C (°F)	-30 to 60 (-22 to 140)

Hydraulic

Max. operating pressure	bar (psi)	350 (5075)
Flow range	l/min.(gpm)	2.5-40 (0.66-11)
Max. internal leakage	drops/min.	15
Fluid temperature range	°C (°F)	-20 to 80 (-4 to 176)
Fluids		Mineral-based or synthetics with lubricating properties at viscosities of 15 to 380 mm ² /s (cSt)
Installation torque	Nm (ft-lbs)	30-35 (22-26)
Filtration		Nominal value max. 10µm (NAS 8) ISO 4406 19/17/14
MTTFd		150 years see RE 18350-51
Cavity		CA-08A-2N see RE 18325-70
Seal kit	code material no.	RG08A2010530100 R901101544
Other technical data		See data sheet RE 18350-50

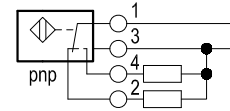
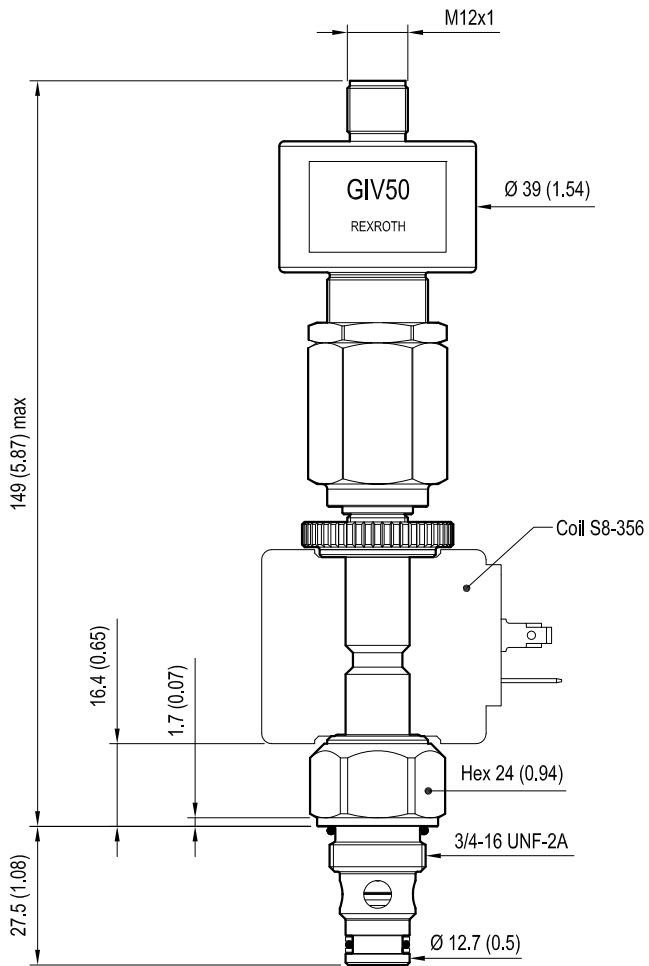
Electrical

Type of voltage	DC voltage
Coil type	S8-356
Supply voltage	See data sheet RE18325-90
Nominal voltage	± 10%
Power consumption	W 20
Duty cycle	% 100 see RE 18325-90
Type of protection	See data sheet RE 18325-90

Please consider that a proper function of the valve is guaranteed only if the position of the monitor is not modified; each cartridge is provided of a torque confirmation mark, intended as anti-tampering device.

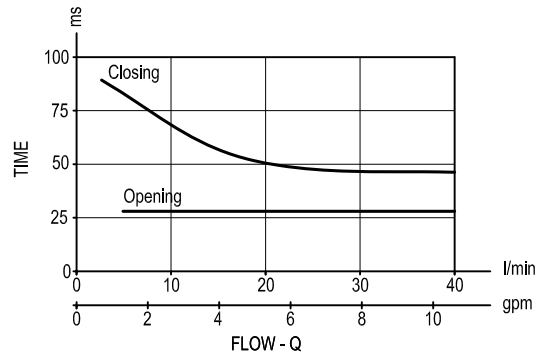
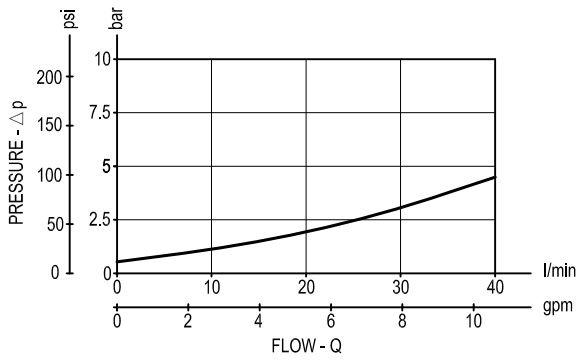
Dimensions

Solenoid operated valves poppet 2-way normally open proximity sensor



mm (Inches)

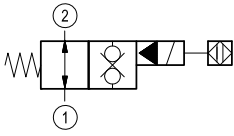
Performance graphs



Ordering code

OD.15	32	18	1DS2	Z
--------------	-----------	-----------	-------------	----------

Solenoid operated valves
poppet 2-way normally
open proximity sensor



OB = 12 V DC

Note: please consult factory for
different voltages.

Common cavity: CA-08A-2N

Type	Material number	Type	Material number
OD1532181DS2OB	R934004542		