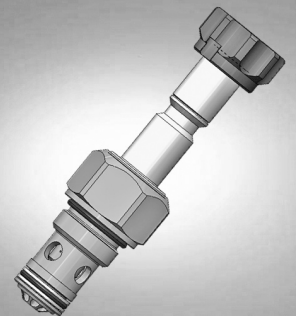


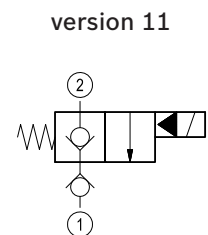
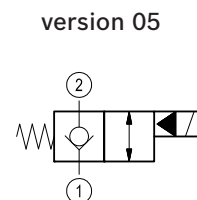
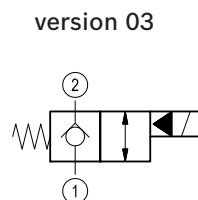
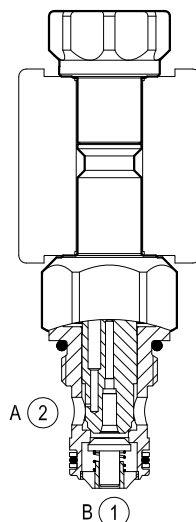
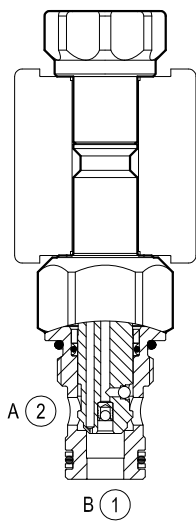
## Solenoid operated valves pilot operated poppet type 2-way normally closed

Special cavity, 019-E



VEI-8A-06-NC

OD.15 - X - 19 - Z



### General

Weight	kg (lbs)	0.13 (0.29)
Installation orientation		Optional
Ambient temperature range	°C (°F)	-30 to 60 (-22 to 140)

### Hydraulic

Max. operating pressure	bar (psi)	350 (5000)
Max. proof pressure	bar (psi)	420 (6000)
Flow range	l/min. (gpm)	0.5-40 (0.1-11)
Fatigue cycle life	cycles	1 million cycles at 350 bar
Max. internal leakage	drops/min.	20
Fluid temperature range	°C (°F)	-20 to 80 (-4 to 176)

Fluids Mineral-based or synthetics with lubricating properties at viscosities of 20 to 380 mm<sup>2</sup>/s (cSt)

Installation torque	Nm (ft-lbs)	39-51 (29-38)
---------------------	-------------	---------------

Filtration		Nominal value max. 10µm (NAS 8) ISO 4406 19/17/14
------------	--	---

Special cavity		019-E see RE 18325-75
----------------	--	-----------------------

Seal kit version 03-11	code	RG19E201053010
	material no.	R934003561

Seal kit version 05	code	RG19E201052010
	material no.	R934003560

Seal kit coil	code	RG12A1PNBR7010
	material no.	R934003958

Other technical data		See data sheet RE 18350-50
----------------------	--	----------------------------

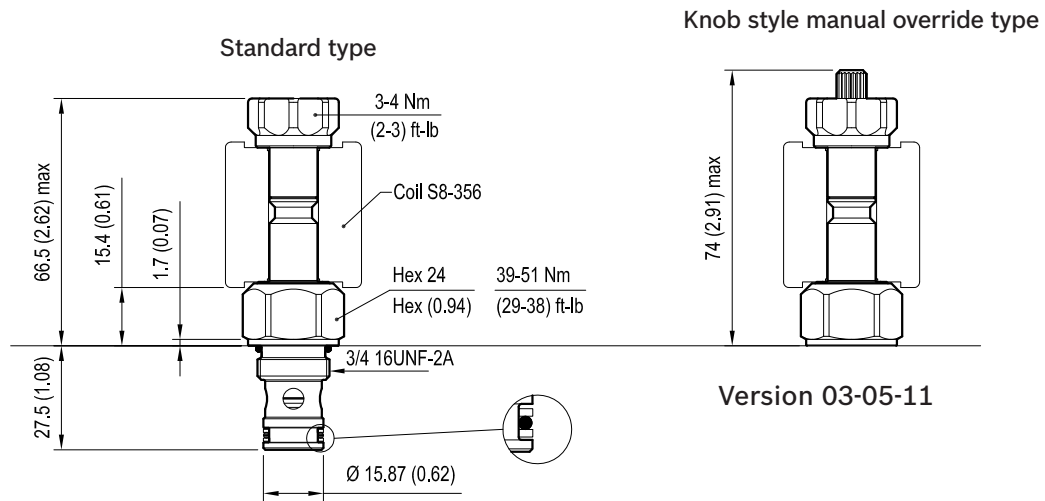
### Electrical

Type of voltage		DC voltage
Coil type		S8-356 see RE 18325-90
Supply voltage		See data sheet RE 18325-90
Nominal voltage		± 10%
Power consumption	W	20
Duty cycle coil	%	See performance graphs
Type of protection		See data sheet RE 18325-90

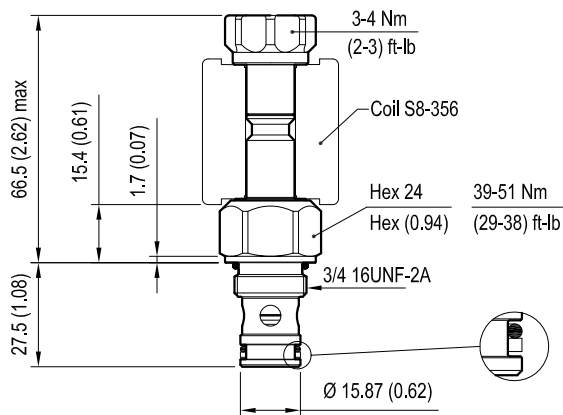
Note: Coils must be ordered separately.

## Dimensions

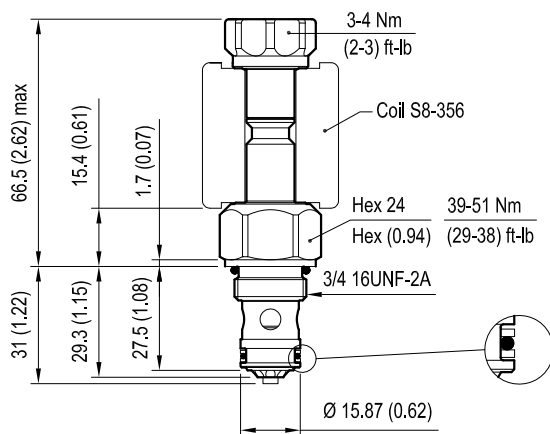
### Version 03: Solenoid operated valve, poppet 2-way normally closed



### Version 05: Solenoid operated valve, poppet 2-way normally closed



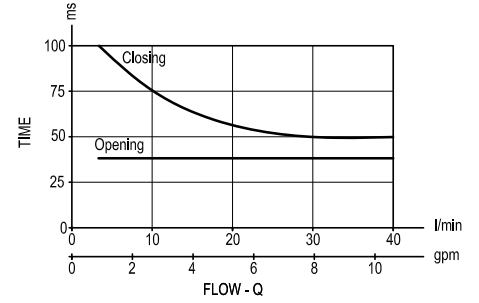
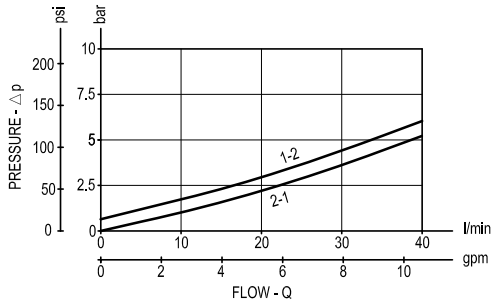
### Version 11: Solenoid operated valve, poppet 2-way normally closed



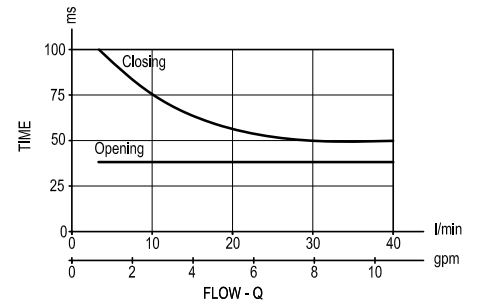
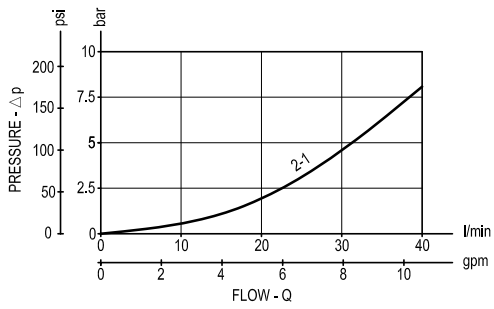
mm (Inches)

# Performance graphs

Version 03-05



Version 11

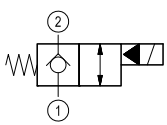
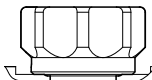
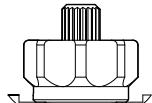
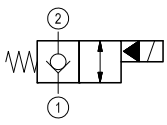
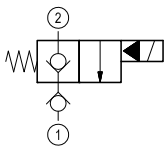


### Ordering code

	<b>OD.15</b>	<b>X</b>	<b>19</b>	<b>Z</b>	<b>*</b>	
--	--------------	----------	-----------	----------	----------	--

Solenoid operated valves poppet type 2-way normally closed

---

<p>bidirectional type</p>  <p style="text-align: right;">03 =</p>	<p>S0 = Tube not welded</p> <hr/> <p>standard type</p> <p>3A = </p> <hr/> <p>knob style manual override</p> <p>3D = </p> <hr/>
<p>bidirectional type</p>  <p style="text-align: right;">05 =</p>	
<p>monodirectional type</p>  <p style="text-align: right;">11 =</p>	<p>Special cavity: 019-E</p>

Type	Material number
OD1503193AS00	R934000785
OD1503193DS00	R934000786
OD1505193AS00	R934000895
OD1505193DS00	R934000898
OD1511193AS000	R901091157
OD1511193DS000	R901091158