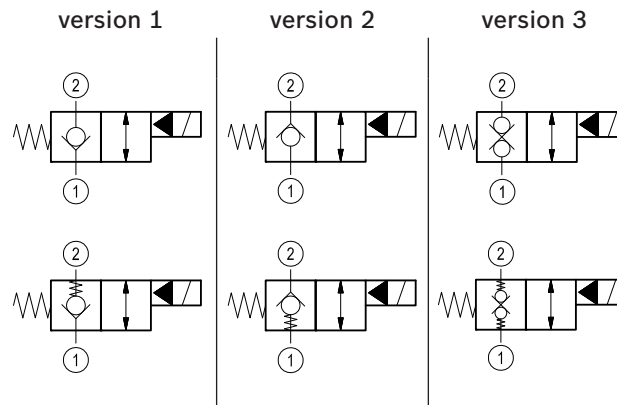
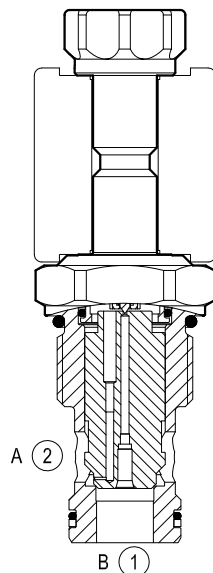
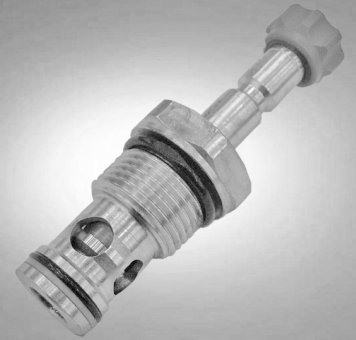


Solenoid operated valves pilot operated poppet type 2-way normally closed

Common cavity, Size 12

VEI-8A-12A-NC

OD.15 X - 89 - Y - Z



General

| | | |
|---------------------------|----------|------------------------|
| Weight | kg (lbs) | 0.22 (0.48) |
| Installation orientation | | Optional |
| Ambient temperature range | °C (°F) | -30 to 60 (-22 to 140) |

Hydraulic

| | | |
|-------------------------|-------------------|--|
| Max. operating pressure | bar (psi) | 350 (5000) |
| Flow range | l/min. (gpm) | 5-150 (1-40) |
| Max. internal leakage | drops/min. | 20 |
| Fluid temperature range | °C (°F) | -20 to 80 (-4 to 176) |
| Fluids | | Mineral-based or synthetics with lubricating properties at viscosities of 20 to 380 mm ² /s (cSt) |
| Installation torque | Nm (ft-lbs) | 54-66 (40-49) |
| Filtration | | Nominal value max. 10µm (NAS 8) ISO 4406 19/17/14 |
| Cavity | | CA-12A-2N see RE 18325-75 |
| Seal kit - version 1 | code material no. | RG12A2010520100 R901111377 |
| Seal kit - version 2-3 | code material no. | RG12A2010530100 R930003374 |
| Seal kit coil | code material no. | RG12A1PNBR7010 R934003958 |
| Other technical data | | See data sheet RE 18350-50 |

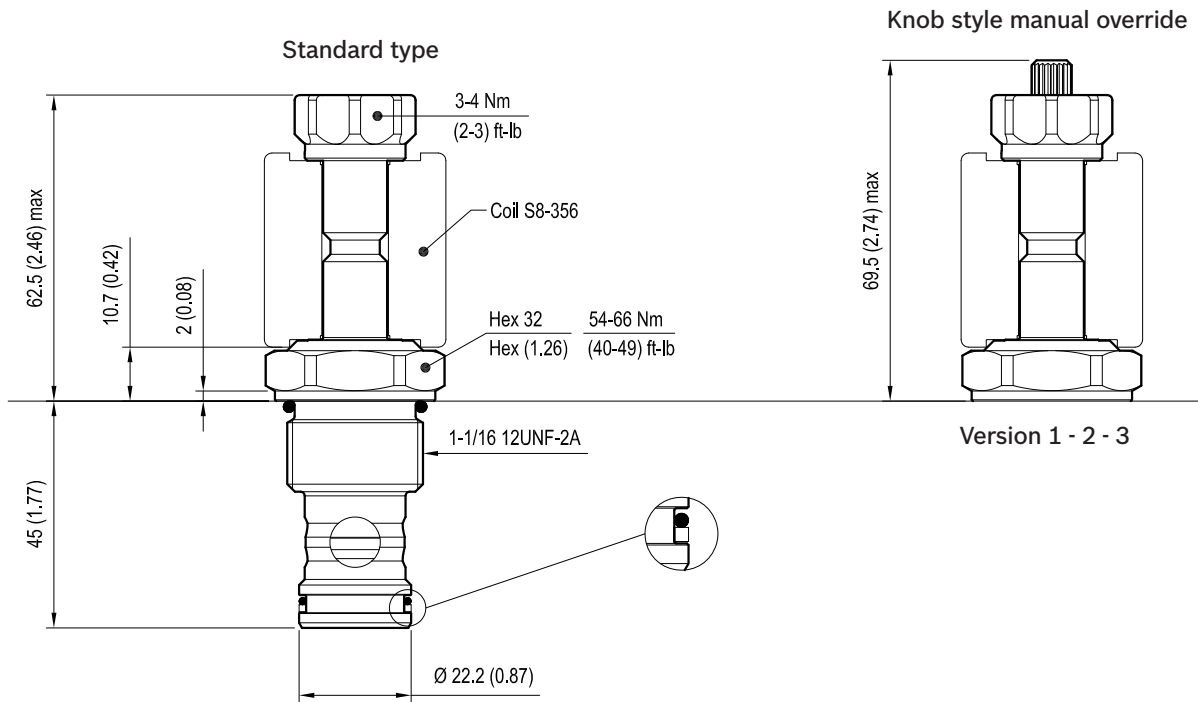
Electrical

| | |
|--------------------|----------------------------|
| Type of voltage | DC voltage |
| Coil type | S8-356 see RE 18325-90 |
| Supply voltage | See data sheet RE 18325-90 |
| Nominal voltage | ± 10% |
| Power consumption | W 20 |
| Duty cycle coil | % See performance graphs |
| Type of protection | See data sheet RE 18325-90 |

Note: Coils must be ordered separately.

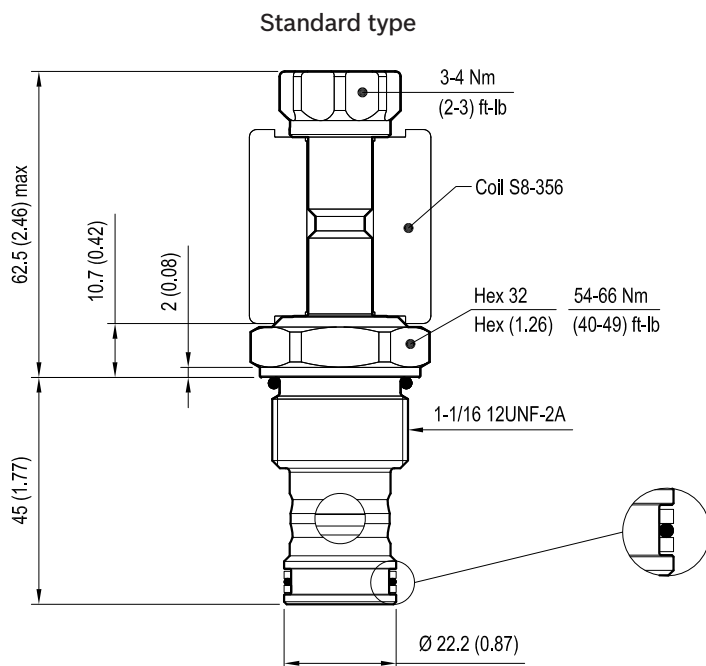
Dimensions

Version 1: Solenoid operated valve, poppet 2-way normally closed



Version 2: Solenoid operated valve, poppet 2-way normally closed

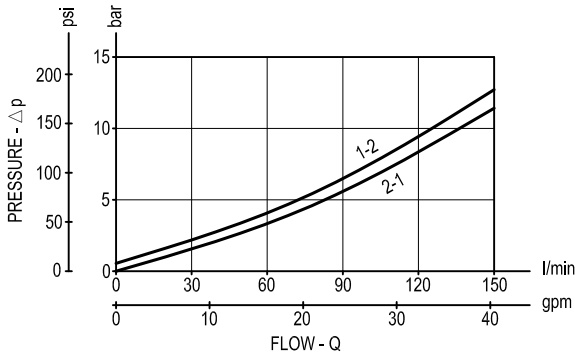
Version 3: Solenoid operated valve, poppet 2-way double lock normally closed



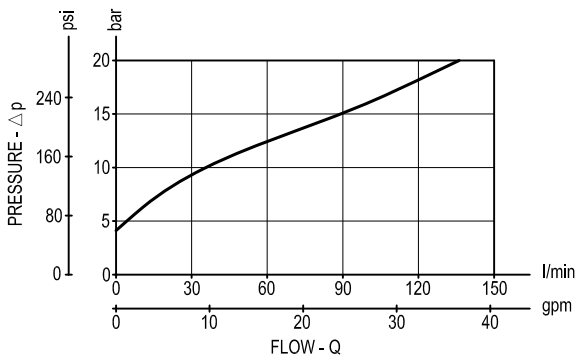
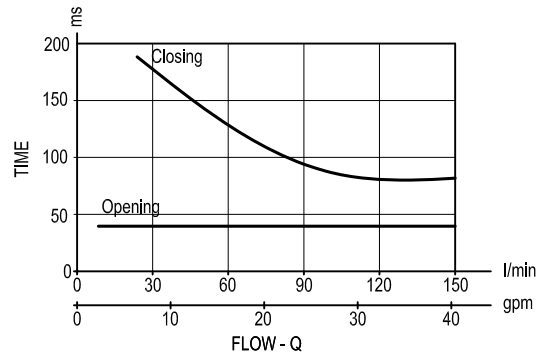
mm (Inches)

Performance graphs

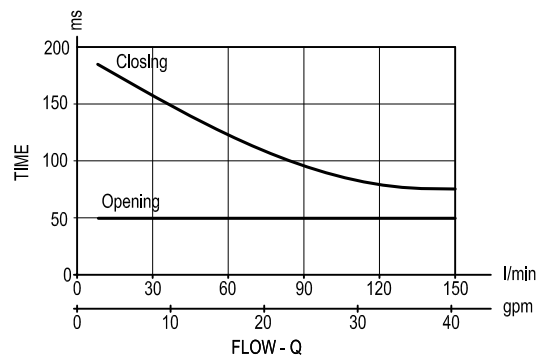
Version 1 - Version 2



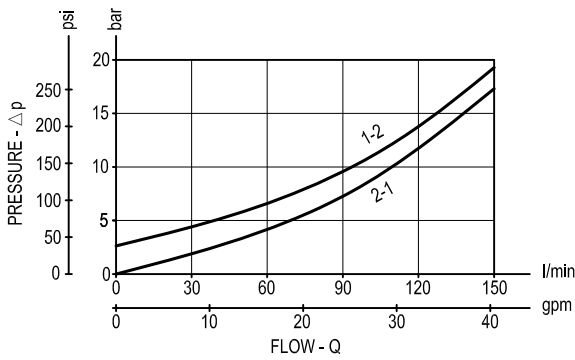
Standard



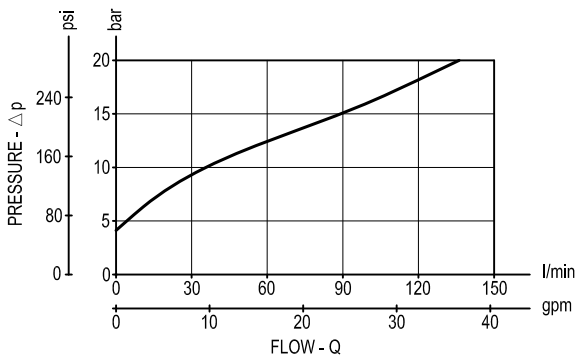
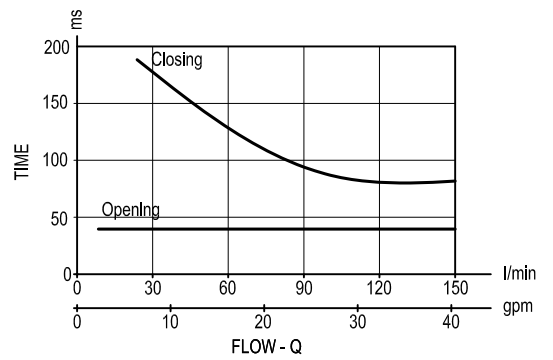
Extra spring



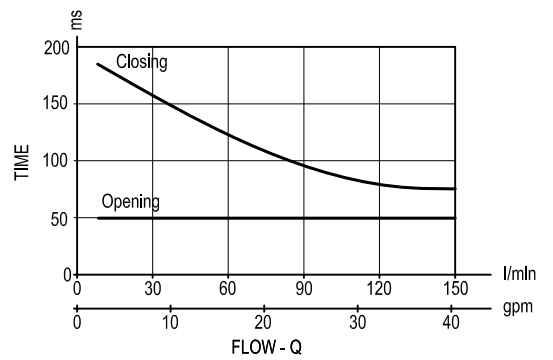
Version 3



Standard



Extra spring

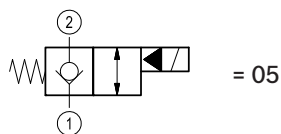


Ordering code

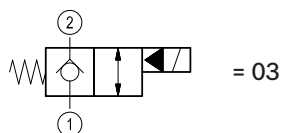
| | | | | |
|-------|---|----|---|---|
| OD.15 | * | 89 | * | * |
|-------|---|----|---|---|

Solenoid operated valves
poppet type 2-way
normally closed

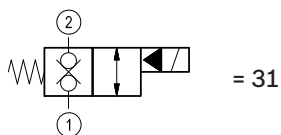
bidirectional type



bidirectional type



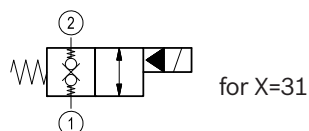
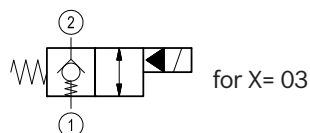
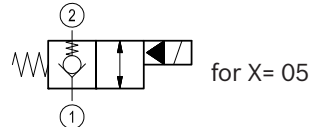
double lock



Common cavity: CA-12A-2N

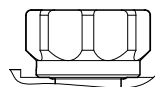
S0 = Tube not welded

S8 = Tube not welded with extra spring



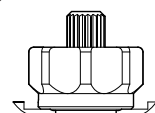
standard type

3A =



knob style manual override

3D =



| Type | Material number |
|----------------|-----------------|
| OD1503893AS000 | R901091116 |
| OD1503893AS800 | R901109961 |
| OD1503893DS000 | R901091117 |
| OD1503893DS800 | R901109962 |
| OD1505893AS000 | R901091127 |
| OD1505893AS800 | R901091128 |
| OD1505893DS000 | R901091129 |
| OD1505893DS800 | R901109978 |
| OD1531893AS000 | R901091168 |

| Type | Material number |
|----------------|-----------------|
| OD1531893AS800 | R901091169 |
| OD1531893DS000 | R901091170 |
| OD1531893DS800 | R901109990 |
| | |
| | |
| | |
| | |
| | |