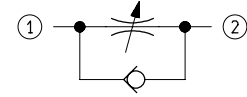
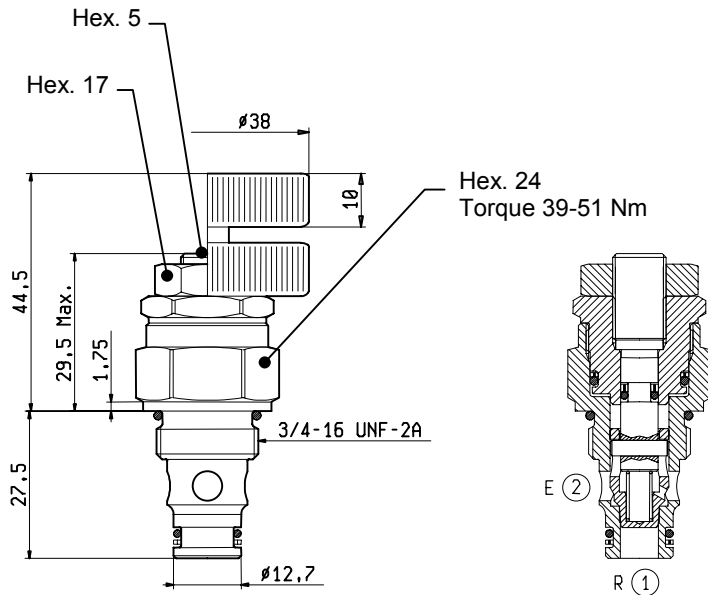


**FLOW CONTROL VALVES
CARTRIDGE RESTRICTORS
WITH REVERSE FLOW CHECK**



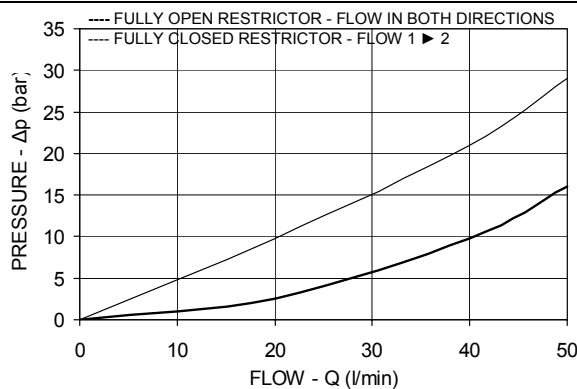
ST-CU-06

OD.21.04.18 - X - 00



TECHNICAL DATA

Maximum Operating Pressure	350	bar
Rated Flow	40	l/min
Cavity - Tooling (018-E)	page 7.01.100	
Weight	0.130	kg
Fluids - Temperatures	page 7.01.040	
Testing Conditions - Seals	page 7.01.040	
Internal Leakage	page 7.01.040	
Filtration : 25 µm nominal or better	page 7.01.050	
Adjustment Torque at 10 bar	2	Nm
Adjustment Torque at 350 bar	4	Nm
Mounting Position	unrestricted	



X ORDERING OPTIONS

03	Socket Screw	
04	Handknob and Locknut	