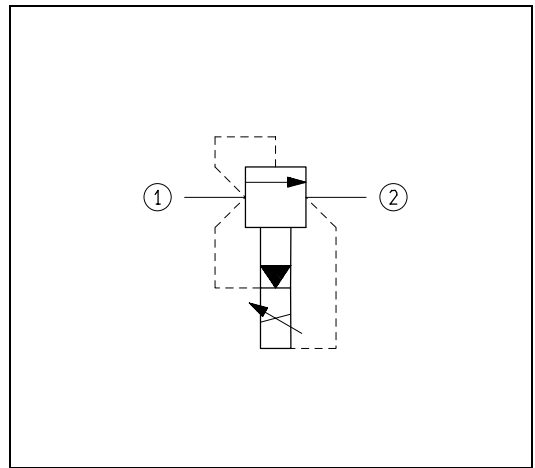
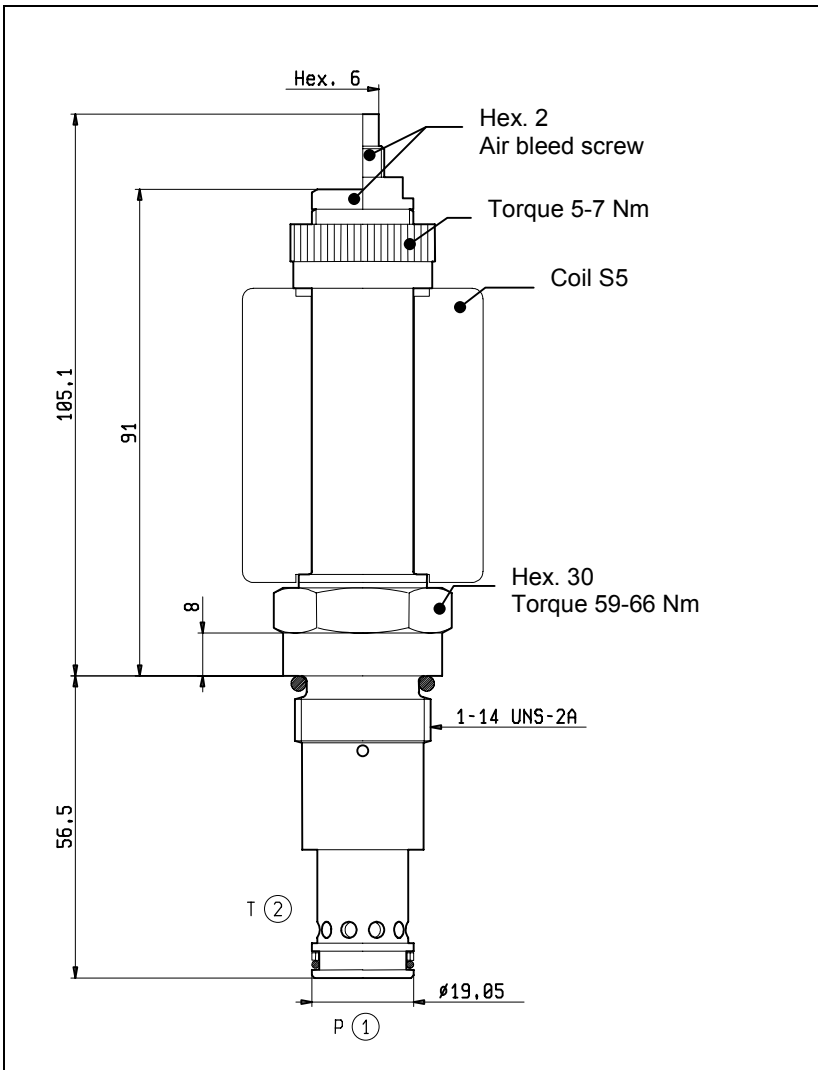


**PROPORTIONAL VALVES
PILOT OPERATED RELIEF
CARTRIDGE STYLE**



VEP-5B-2S-P

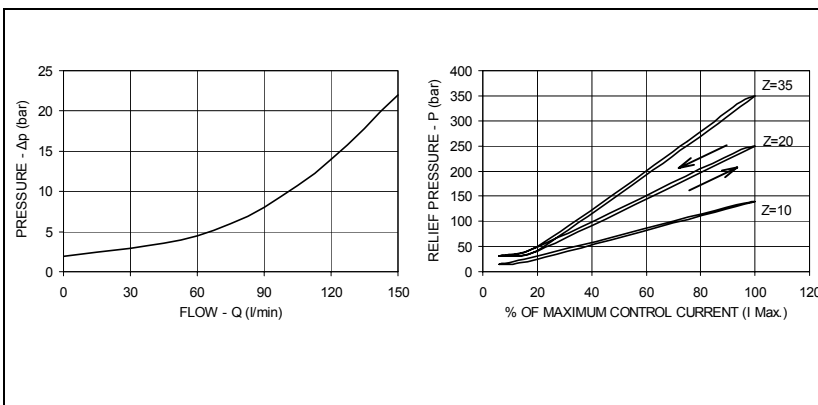
OD.94.05.61 - Y - Z



TECHNICAL DATA

Maximum Operating Pressure	350	bar
Rated Flow	150	l/min
Recommended PWM frequency	150-180	Hz
Cavity - Tooling (061-E)	page 7.01.150	
Weight	0.335	kg
Fluids - Temperatures	page 7.01.040	
Testing Conditions - Seals	page 7.01.040	
Internal leakage	Max.20	cm ³ /min
Filtration : 10 µm nominal or better	page 7.01.050	
Coils must be ordered separately	page 1.71.090	
Mounting Position	unrestricted	

N.B. It is recommended to bleed air carefully before operation.



Z	OPERATING RANGE			
	Pressure Range bar	Voltage V	I Min. A (± 10%)	I Max. A (± 10%)
10	15-140	12	0.2	1.5
20	30-250	12	0.1	1.7
35	30-350	12	0.2	1.7

Y	ORDERING OPTIONS	
03	Standard	
04	Knob Style Manual Override	