

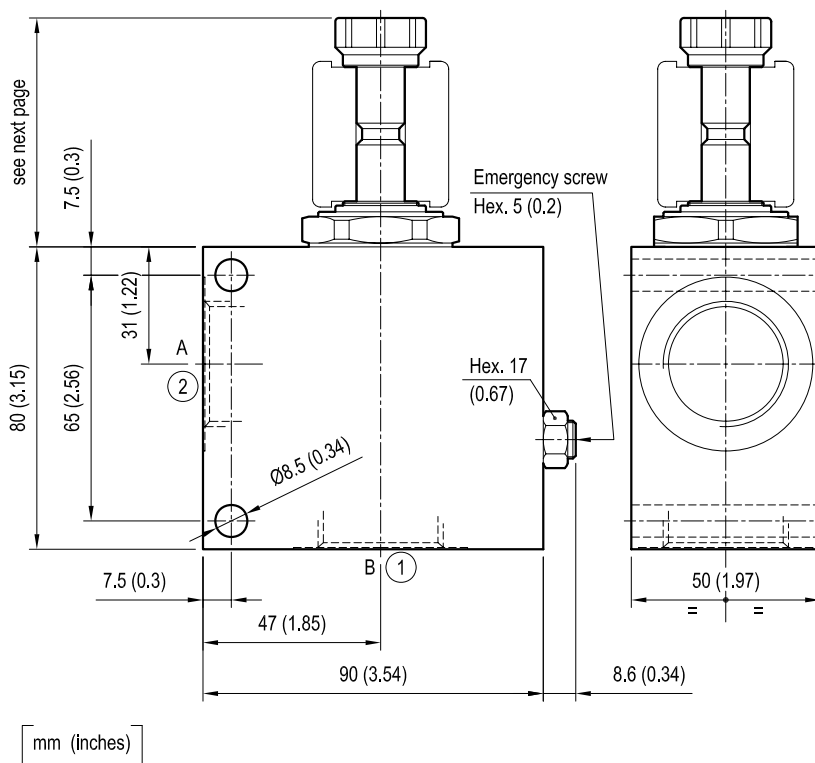
Solenoid operated valves 2-way 2-positions, normally closed

Special cavity
in emergency manifold

VEI-CE-8A-12

OE.15 - K - 21 - Y - Z - W

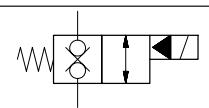
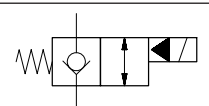
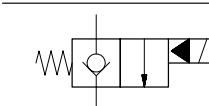
Dimensions



Cartridge schemes

monodirectional type

bidirectional type



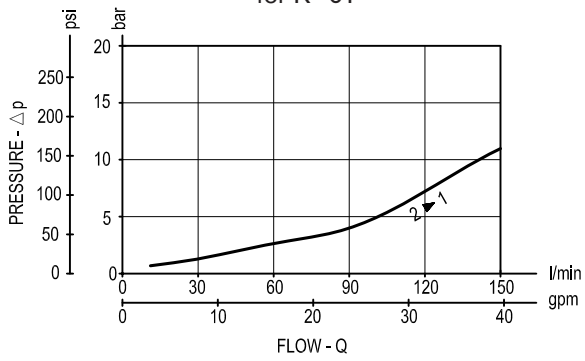
Technical data

| | | |
|--|-----------------|------------|
| Max flow: | up to 150 l/min | (40 gpm) |
| Max operating pressure for steel body: | 350 bar | (5000 psi) |
| Max operating pressure for aluminium body: | 210 bar | (3000 psi) |

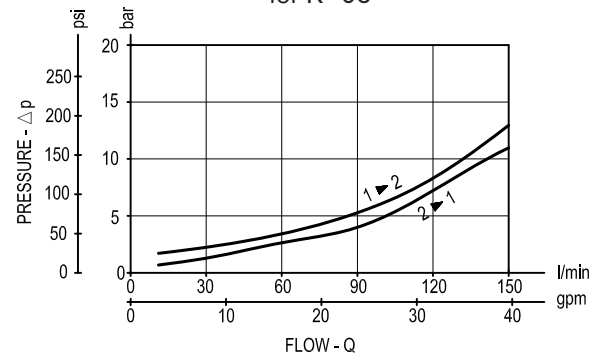
To order only manifold see data sheet RE 18325-85

Performance graphs

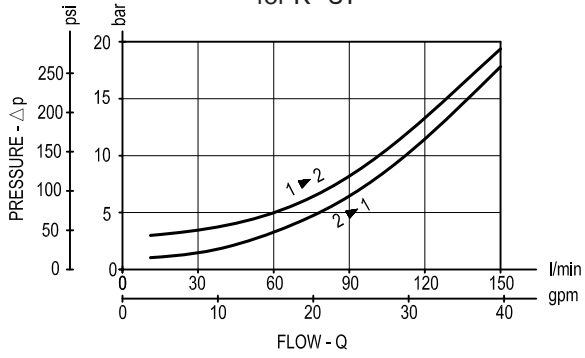
for K=01



for K=05



for K=31



Ordering code

| | | | | | |
|-------|---|----|---|---|---|
| OE.15 | K | 21 | Y | Z | W |
|-------|---|----|---|---|---|

Solenoid operated valve,
2-way 2-positions, normally closed
in emergency manifold

Cartridge scheme (see page 1 and 2)

| | |
|------|-----------------|
| = 01 | Monodirectional |
| = 05 | Bidirectional |
| = 31 | |

Special cavity 021-E

Manifold material

| | |
|------|-----------|
| = 00 | Aluminium |
| = S0 | Steel |

Port sizes (see table on page 2)

| | |
|------|-------|
| = 04 | G 3/4 |
|------|-------|

See table on page 2

Preferred types (readily available)

| Type | Material number |
|----------------|-----------------|
| OE1501213A0500 | R934001575 |
| OE1505213A0500 | R934001603 |
| OE1531213A0500 | R934001647 |
| | |
| | |
| | |
| | |
| | |
| | |
| | |
| | |
| | |
| | |
| | |
| | |
| | |
| | |
| | |
| | |
| | |
| | |

| Type | Material number |
|------|-----------------|
| | |
| | |
| | |
| | |
| | |
| | |
| | |
| | |
| | |
| | |
| | |
| | |
| | |
| | |
| | |
| | |
| | |
| | |
| | |
| | |
| | |

Further types available by request