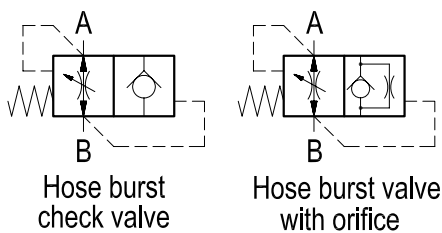
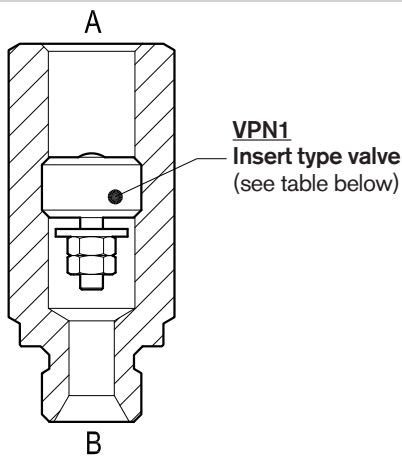


Hose burst insert type check valves With male-female threaded sleeve



VPN-MF (G1/4 - G3/8)

OE.F4.01.02-Y-Z



Description

This valve is composed by a sleeve with an inserted "Hose Burst" steel made cartridge type VPN1 (refer to RE 18329-85). Flow is always allowed to pass from A to B according to the Δp curves included in the Performance diagrams. The reverse flow "B" to "A", or reaction flow, is unrestricted up to the pre-set value, above which the pressure drop across the floating disc will push the disc against the valve body, and will determine immediate closing of the line in a checked, leak free mode. The valve will remain closed (checked) from B to A until pressure is removed from the B, or until the A port pressure equalizes the B pressure. To help re-setting, or shorten the time for the disc to go back to the open position, the inserted cartridge can be supplied with the Extra Orifice "F" on request. The orifice diameter has to be specified when ordering (refer to table "Z"). Precision machining and hardening processes allow virtually leak free performance in the checked condition.

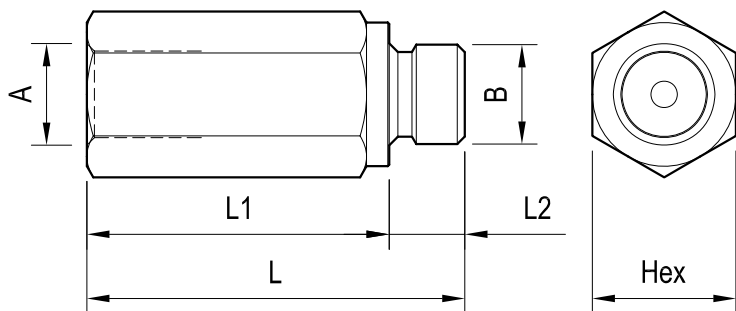
Technical data

VPN1 Code	Ports A-B	Pressure P max bar (psi)	Flow Q max l/min (gpm)	Weight kg (lbs)
0T.F4.01.03.09...	G 1/4	315 (4500)	4-25 (1-7)	0.01 (0.02)
0T.F4.01.03.02...	G 3/8	315 (4500)	6-50 (2-13)	0.03 (0.07)

Steel body, zinc plated

Special, Metric, UNF: sizes available on request.

Dimensions



Ports size / Dimensions

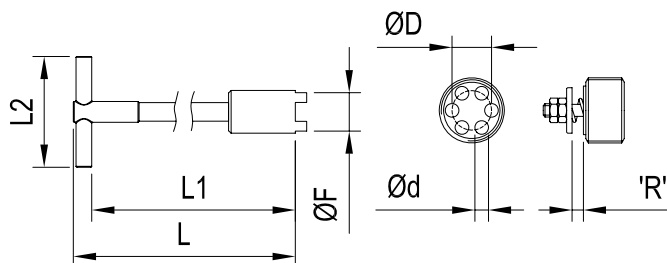
Y	Ports A-B	L mm (inches)	L1 mm (inches)	L2 mm (inches)	Hex mm (inches)	Sleeve code
09	G 1/4	50 (1.97)	40 (1.58)	10 (0.39)	19 (0.75)	OC.51.01.014
02	G 3/8	55 (2.17)	43 (1.69)	12 (0.47)	22 (0.87)	OC.51.01.015

Fitting tool dimension

Z	ORIFICE DIAMETER		mm (inches)
00	no orifice	06	1 (0.039)
01	0.5 (0.019)	07	1.2 (0.047)
02	0.6 (0.023)	08	1.3 (0.051)
03	0.7 (0.027)	09	1.5 (0.059)
04	0.8 (0.031)	10	1.9 (0.074)
05	0.9 (0.035)	11	2 (0.078)

VPN1 code thread	ØF	L	L1	L2	ØD	Ød	Inst. torque	Tool code
OT.F4.01.03.09... G 1/4	11.3 (0.45)	120 (4.72)	110 (4.33)	60 (2.36)	8.5 (0.34)	2.4 (0.10)	2 Nm (1.5)ft-lb	AVA18
OT.F4.01.03.02... G 3/8	15 (0.59)	120 (4.72)	108 (4.25)	80 (3.15)	10.5 (0.41)	3.5 (0.14)	3 Nm (2)ft-lb	AVA18-01

'R'= GAP corresponding to the maximum desired free flow.



NOTE

The complete valve here shown is supplied with the Gap "R" Factory adjusted at 0.5 mm, corresponding to:
 Approx. (10 – 14) l/min, for size G 1/4, and
 Approx. (16 – 20) l/min, for size G 3/8, depending from oil viscosity.
 For special settings consult us.

Important: the pre-set R gap corresponds to the theoretical shut-off flow: please make sure that the selected shut-off flow is at least 50% higher than the actual Maximum Working Flow, in order to prevent inadvertent valve shutting with cold oil.

Applications

In a variety of cases when oil flow must be immediately stopped in case of failure of an hose in order to prevent the load from falling freely. The smallest size G 1/4 is often employed in pressure pick-up lines from cylinders.

Ordering code

OE.F4.01.02	Y	Z
-------------	---	---

With male-female threaded sleeve

Orifice diameter see table "Z"

Ports size / Dimensions see table "Y"

Type	Material number	Type	Material number	Type	Material number
OEF401020200	R931001646	OEF401020210	R932007192	OEF401020908	R932007179
OEF401020201	R932007183	OEF401020211	R932007193	OEF401020909	R932007180
OEF401020202	R932007184	OEF401020900	R931001641	OEF401020910	R932007181
OEF401020203	R932007185	OEF401020901	R932007173	OEF401020911	R932007182
OEF401020204	R932007186	OEF401020902	R932007174		
OEF401020205	R932007187	OEF401020903	R932007175		
OEF401020206	R932007188	OEF401020904	R932007176		
OEF401020207	R932007189	OEF401020905	R932007177		
OEF401020208	R932007190	OEF401020906	R932007217		
OEF401020209	R932007191	OEF401020907	R932007178		