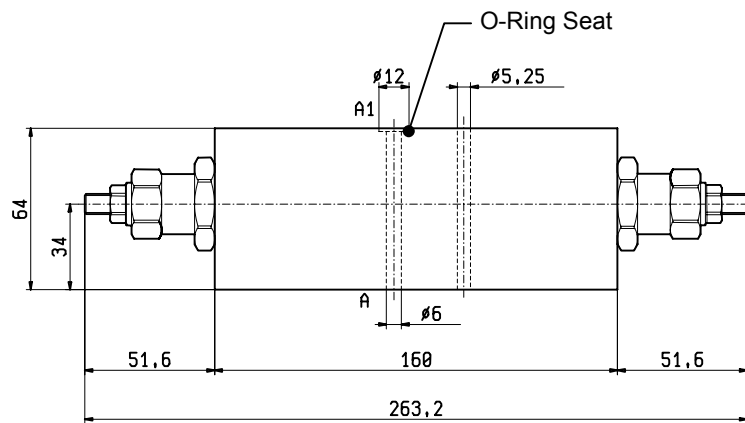
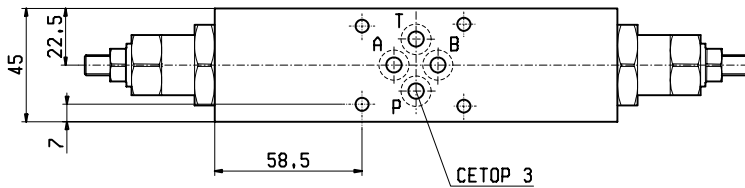


**SANDWICH VALVES  
DUAL OVERCENTRE MODULES**

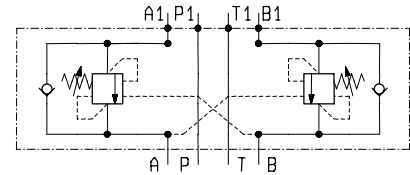


**EM-VBSODE-CETOP 3**

**OP.22.01.03.29 - Z**



These modules contain two single overcentre valve type VBSO-SEC-30 ( see Oil Control catalogue ).



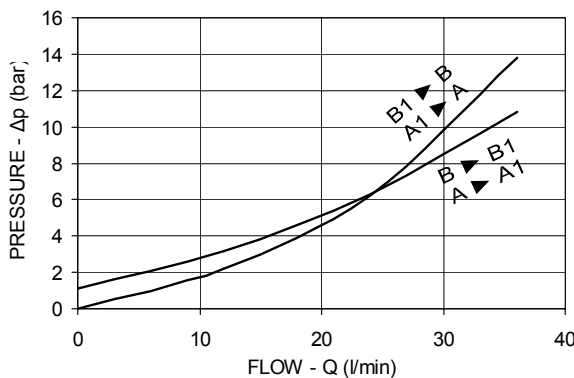
**TECHNICAL DATA**

Maximum Operating Pressure	250	bar
Rated Flow	40	l/min
Weight	1.560	kg
Fluids - Temperatures	page 7.01.040	
Testing Conditions - Seals	page 7.01.040	
Internal Leakage	page 7.01.040	
Filtration : 25 µm nominal or better	page 7.01.050	

Manifolds in high-strength aluminium for working pressures up to 250 bar.

Special steel manifolds can be supplied upon request for working pressures up to 350 bar and for fatigue cycle applications.

**IMPORTANT:** All products shown in this page are not available from stock and not included in our standard price list. Please contact our Sales Department for any information.



Z	SPRINGS				
	Adj. press. range bar	Press. increase bar/turn	Standard setting bar (Q=5 l/min)	Ordering code	Colour
<b>20</b>	60-210	56	200	03.51.01.106	green
<b>35</b>	100-350	138	350	03.51.01.171	yellow