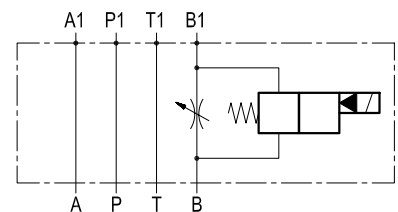
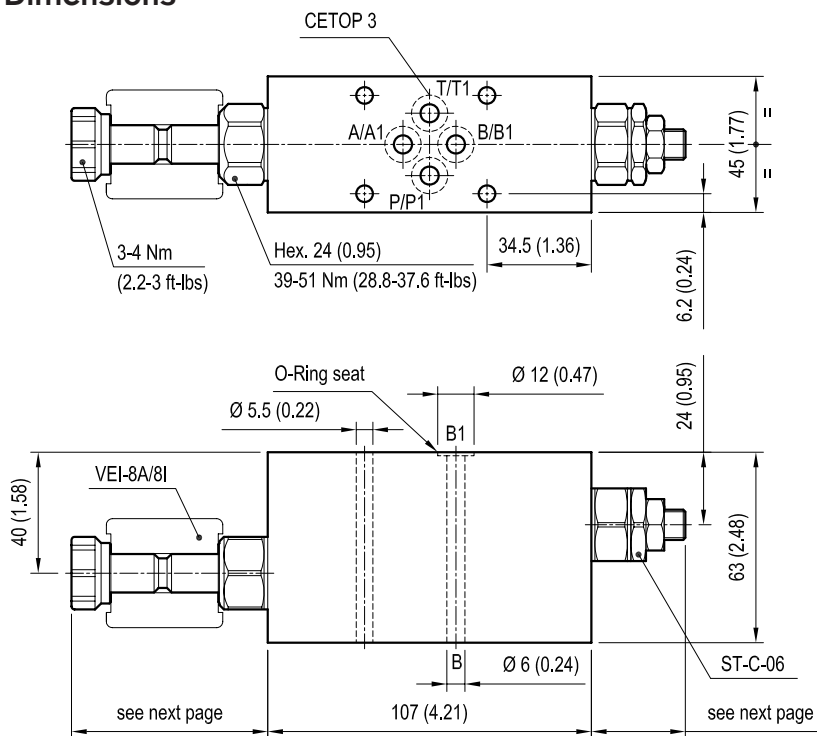


## Sandwich valves, module with solenoid valve and flow restrictor

EM-VEI8A/8I-ST-CETOP3-B1

OP . 62 - K - X - 29 - Y

### Dimensions



### Technical data

Max flow: up to 40 l/min (11 gpm)

Max operating pressure: 210 bar (3000 psi)

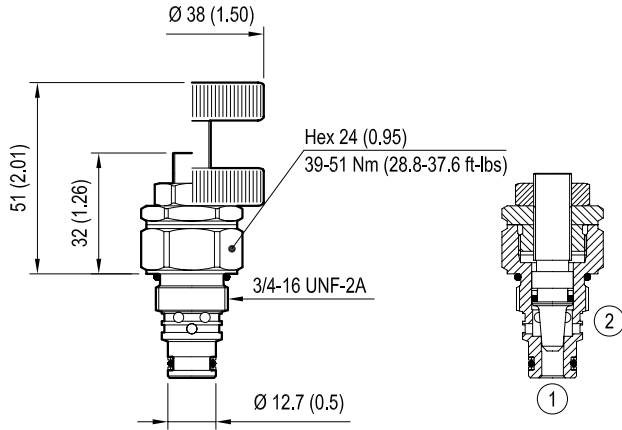
Standard manifolds in high strength **aluminium**.  
For working pressure up to 350 bar (5000 psi)  
and for fatigue applications with any working  
pressure, steel manifolds are available upon  
request.

**Note:** meter-in control

[ mm (inches) ]

OP62		- K -		- X -	29	- Y -		CARTRIDGE SCHEME	
		monodir.	bidir.			Rated Flow		monodir.	bidir.
						30 l/min (8 gpm)	40 l/min (11 gpm)		
CARTRIDGE CODE	OD15		<b>05</b>	see next page	18	<b>3I</b>	<b>3A</b>		
	OD15		<b>05</b>		18	<b>3M</b>	<b>3D</b>		
	OD15		<b>06</b>		18	<b>1I</b>	<b>1A</b>		
	OD15		<b>06</b>		18	<b>1L</b>	<b>1B</b>		
	OD15		<b>06</b>		18	<b>1M</b>	<b>1C</b>		

**ST-C-06 FLOW RESTRICTOR**  
code OD.21.01.X.56.Z



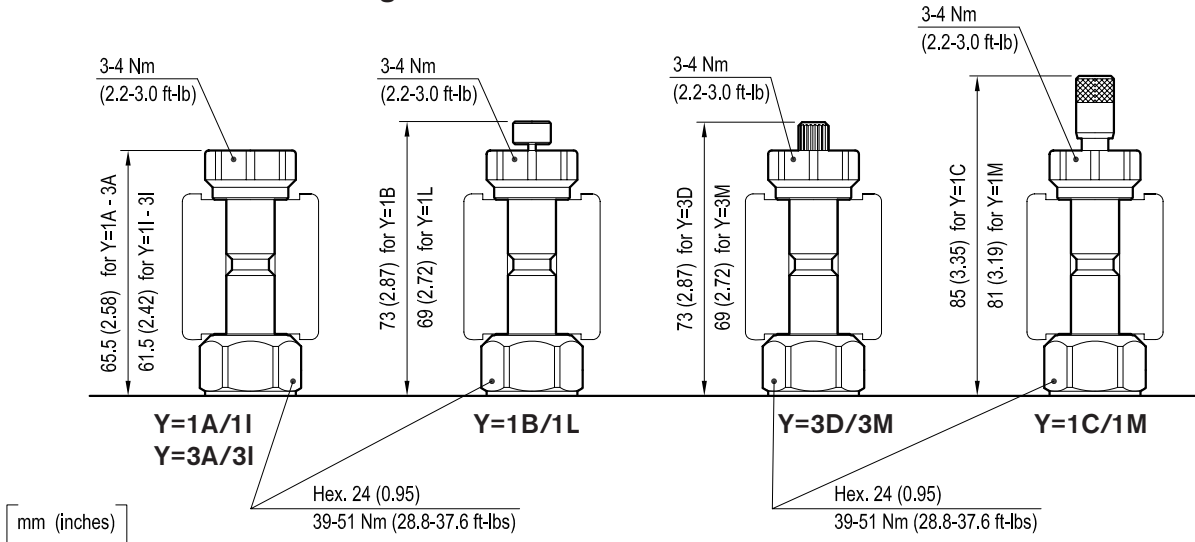
[ mm (inches) ]

Table "X"

X	ST-C-06 ADJUSTMENTS	
03	Leakproof hex. socket screw	
04	Handknob and locknut	

For other details see data sheet RE 18321-26

**VEI-8A/8I Solenoid cartridge**



[ mm (inches) ]

Table "Y"

Y	MANUAL OVERRIDE OPTIONS		VEI-8A TECHNICAL DATA	
	K = 05	K = 06		
1A/1I	/	No override	Internal leakage:	max. 1 cm <sup>3</sup> /min (0.06 inch <sup>3</sup> /min)
1B/1L	/	Push style	Filtration:	25 µm nominal or better
1C/1M	/	Push and twist style	Minimum voltage required:	90% of nominal value
3A/3I	No override	/	Coil:	S8-356 (must be ordered separately) (see data sheet RE 18325-90)
3D/3M	Knob style	/	For other details see cartridge data sheet	

Performance graphs

