

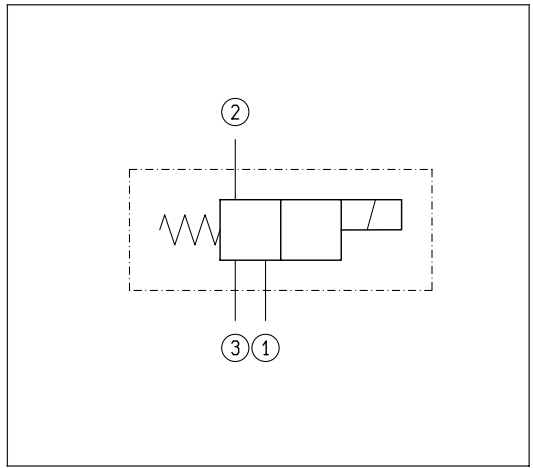
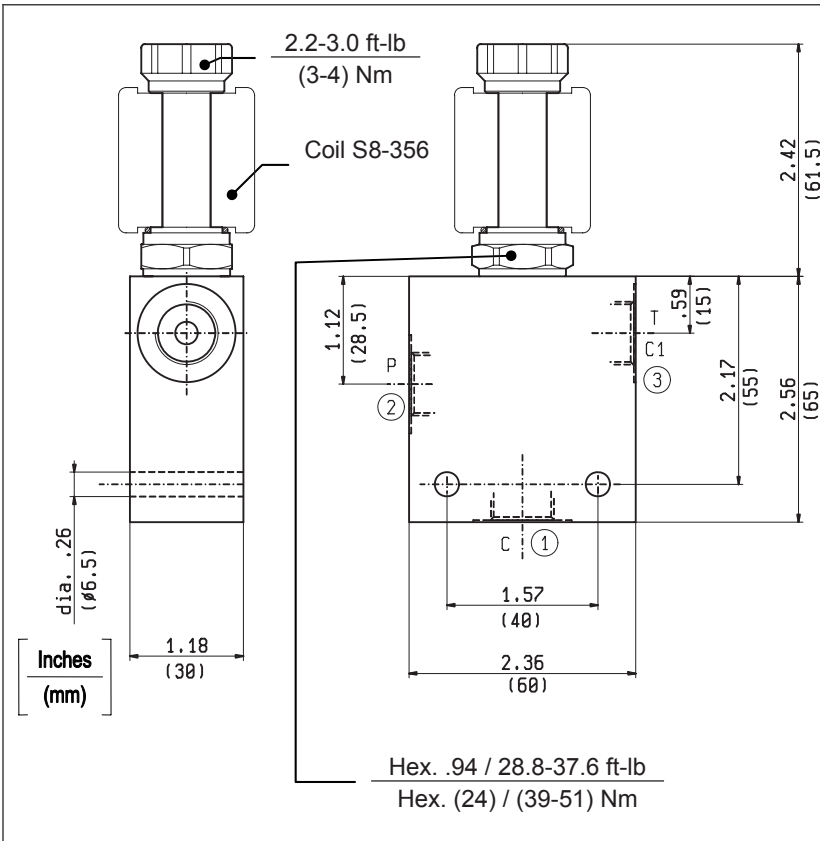


SOLENOID OPERATED VALVES
3-WAY SERIES 8I IN STANDARD MANIFOLD
COMMON CAVITY

VED-CS-8I-32-06

SIZE 08

OS.13 - K - 51 - Y - Z



TECHNICAL DATA

Maximum Operating Pressure 3000 psi (210 bar)

See cartridge data sheets for curves, features and functional details.

Standard manifolds in high strength aluminum. To order manifold only see page MN2.A..

IMPORTANT: Ordering code of cartridge in standard manifold models is the same of cartridge only models except for first couple of digits (**OS** instead of **OD**) and sixth couple of digits (**Z** - PORT SIZE instead of **00**).

EXAMPLE:

OD.13.10.51.30.00 **OS.13.10.51.30 - Z**

K	Same as cartridge code
Y	Same as cartridge code

CARTRIDGES TO BE INSERTED
(OD.13 - K - 51 - Y - 00)

VED	
OD.13. 10 .51. - Y - 00	
OD.13. 20 .51. - Y - 00	
OD.13. 30 .51. - Y - 00	

Z	PORT SIZE		
02		G 3/8	
09		G 1/4	