

# Solenoid operated valves

## 2-way 2-positions

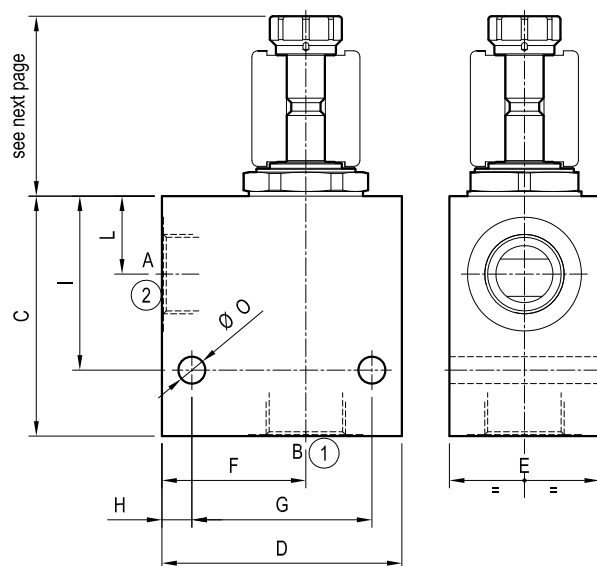
Common cavity size 16

Cartridge style in manifold

VEI-CS-7A/8A-16A

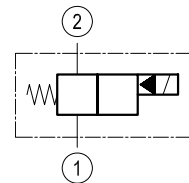
OS.15 - K - 75 - Y - Z - W

### Dimensions



[ mm (inches) ]

A - B	C	D	E	F	G	H	I	L			O	
G 3/4	80 (3.15)	80 (3.15)	50 (1.97)	48 (1.89)	60 (2.36)	10 (0.39)	58 (2.28)	26 (1.02)			9 (0.35)	
G 1	80 (3.15)	90 (3.54)	50 (1.97)	53 (2.09)	60 (2.36)	20 (0.79)	58 (2.28)	26 (1.02)			9 (0.35)	



### Cartridge schemes

monodirectional type	bidirectional type

### Technical data

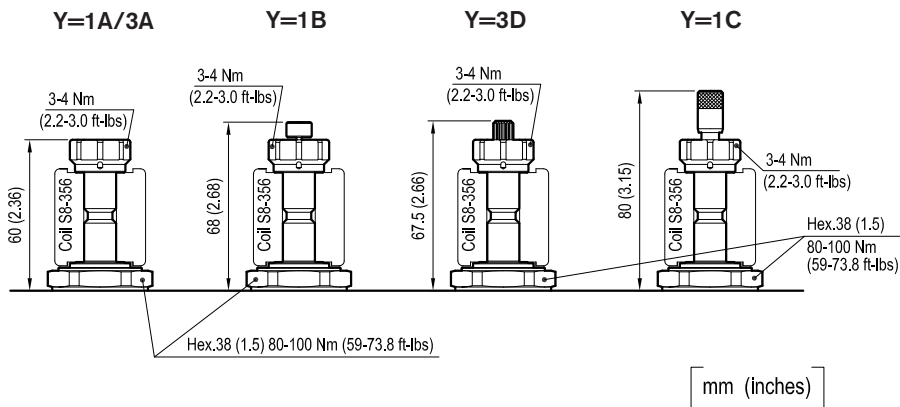
Max flow: up to 150 l/min (40 gpm)

Max operating pressure for  
**steel** body: 350 bar (5000 psi)

Max operating pressure for  
**aluminium** body: 210 bar (3000 psi)

To order only manifold see data sheet RE 18325-85

## Dimensions

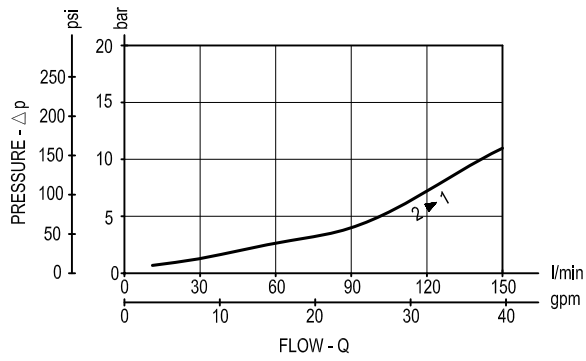
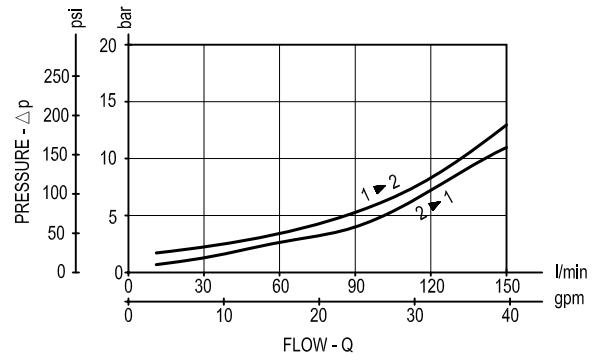


CARTRIDGE TECHNICAL DATA
Common cavity: <b>CA-16A-2N</b>
Filtration: 25 µm nominal or better
Minimum voltage required: 90% of nominal value
Coil : <b>must be ordered separately</b> (see data sheets RE 18325-90)
Mounting position: unrestricted

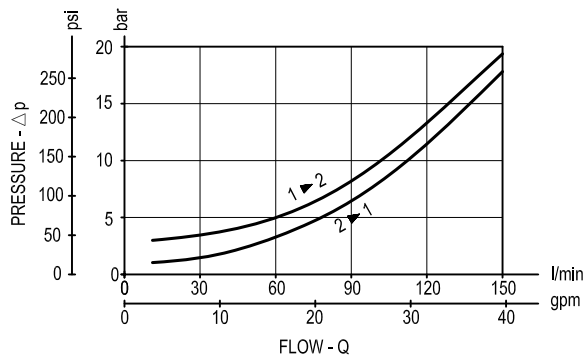
[illegible]

## Performance graphs

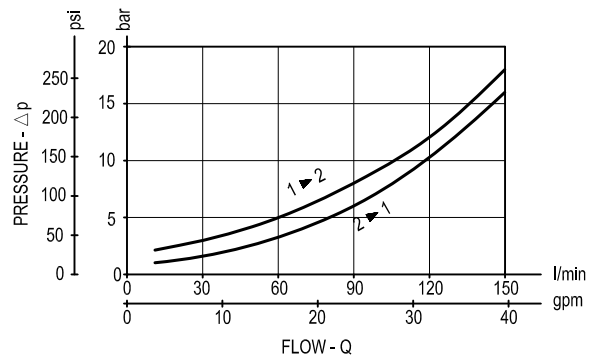
for K=01-02

for K=05 / Y=3A-3D  
for K=06 / Y=1A-1B-1C

for K=31 / Y=3A-3D



for K=32 / Y=1A-1B-1C



### Ordering code

OS.15	K	75	Y	Z	W
-------	---	----	---	---	---

**Manifold with  
solenoid operated valve,  
2-way 2-positions**

**Cartridge scheme** (see page 1 and 2)

**= 01** Monodirectional  
**= 02**

<b>= 05</b>	
<b>= 06</b>	
<b>= 31</b>	Bidirectional
<b>= 32</b>	

### Common cavity Size 16

## Manifold material

**= 00**     Aluminium

**= S0**      Steel

**Port sizes** (see table on page 2)

**= 04**      G 3/4

**= 05**      **G 1**

See table on page 2

**Preferred types** (readily available)

[illegible][illegible]

**Further types available by request**