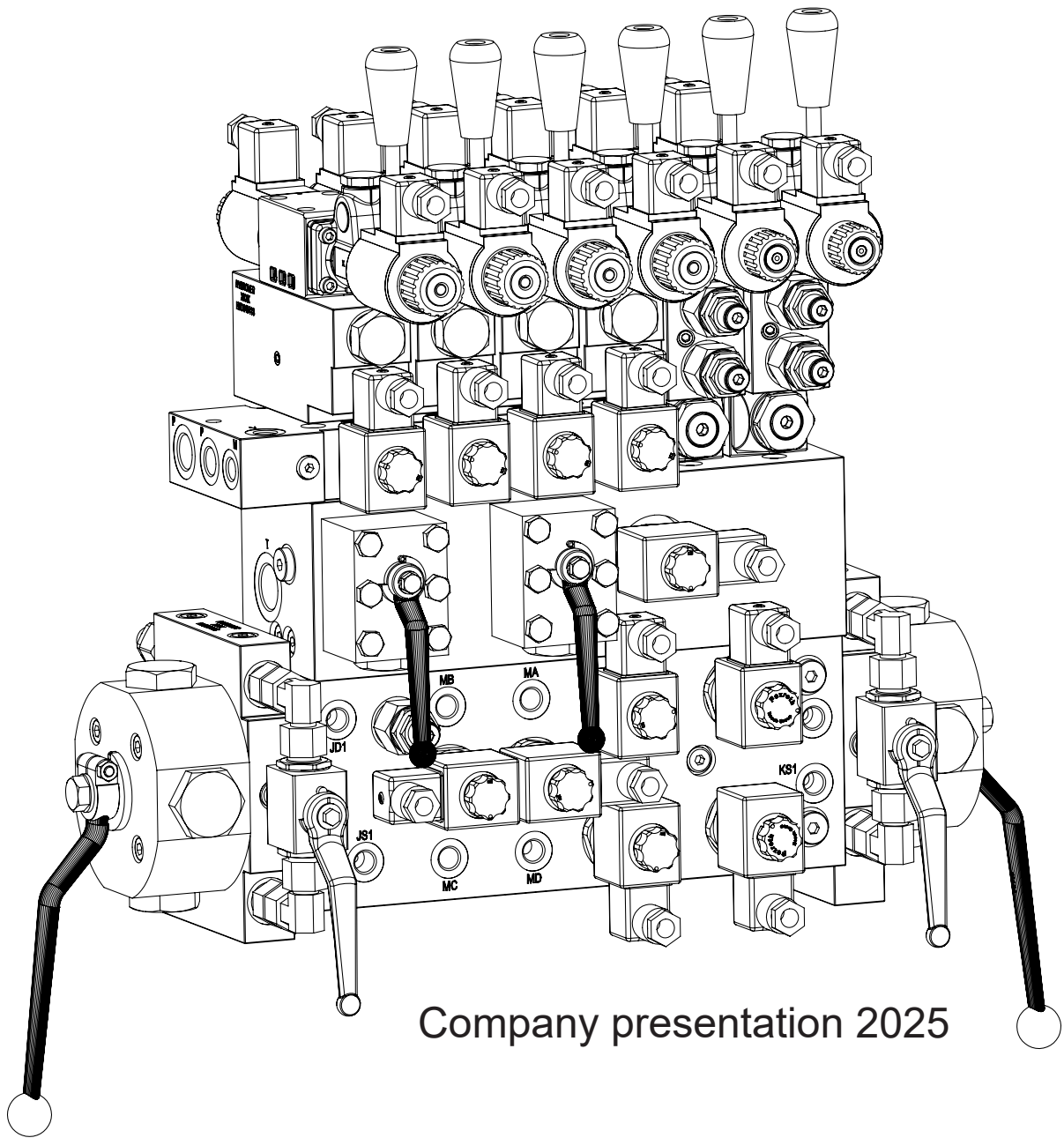


HYDROVER

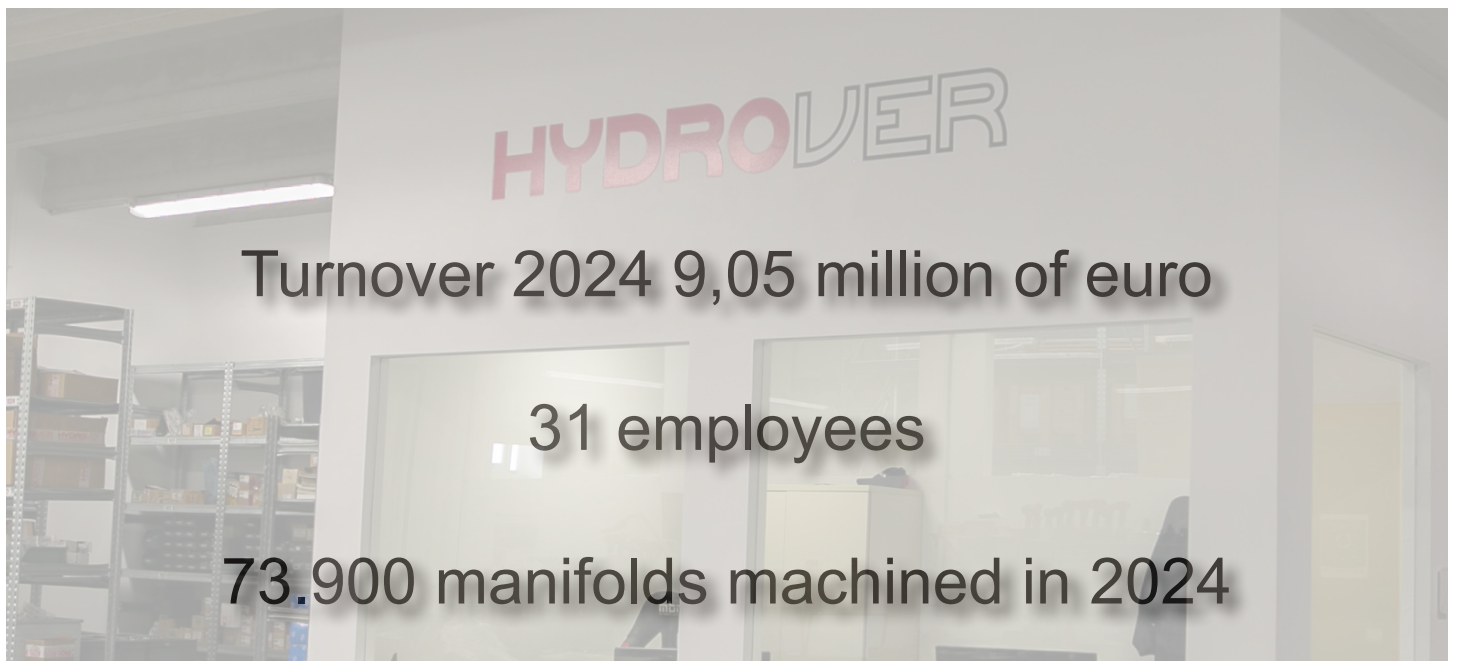
HYDRAULIC INTEGRATED CIRCUITS



Our company designs, manufactures and markets hydraulic components.
We are a **Bosch Rexroth Oil Control** dealer.

This activity begins in 1982 with the acquisitions of representations for Piedmont of some companies in the hydraulic sector (already then Oil Control). This work promotes the build up of a close **technical partnership** with the main companies in the sector of operative machinery mobile machinery and industrial machines using hydraulic systems.

Hydrover has therefore turned directly to the market making available to the customers the **experience gained** and the **flexibility typical of a small business**. These features have allowed us to establish over the time commercial and technical relationship with several companies present in the field and also abroad.



Establishment of 2400 m²

1 Haas vertical CNC machining centre

1 Mori Seiki dual-spindle CNC lathe
(23600 components produced in 2024)

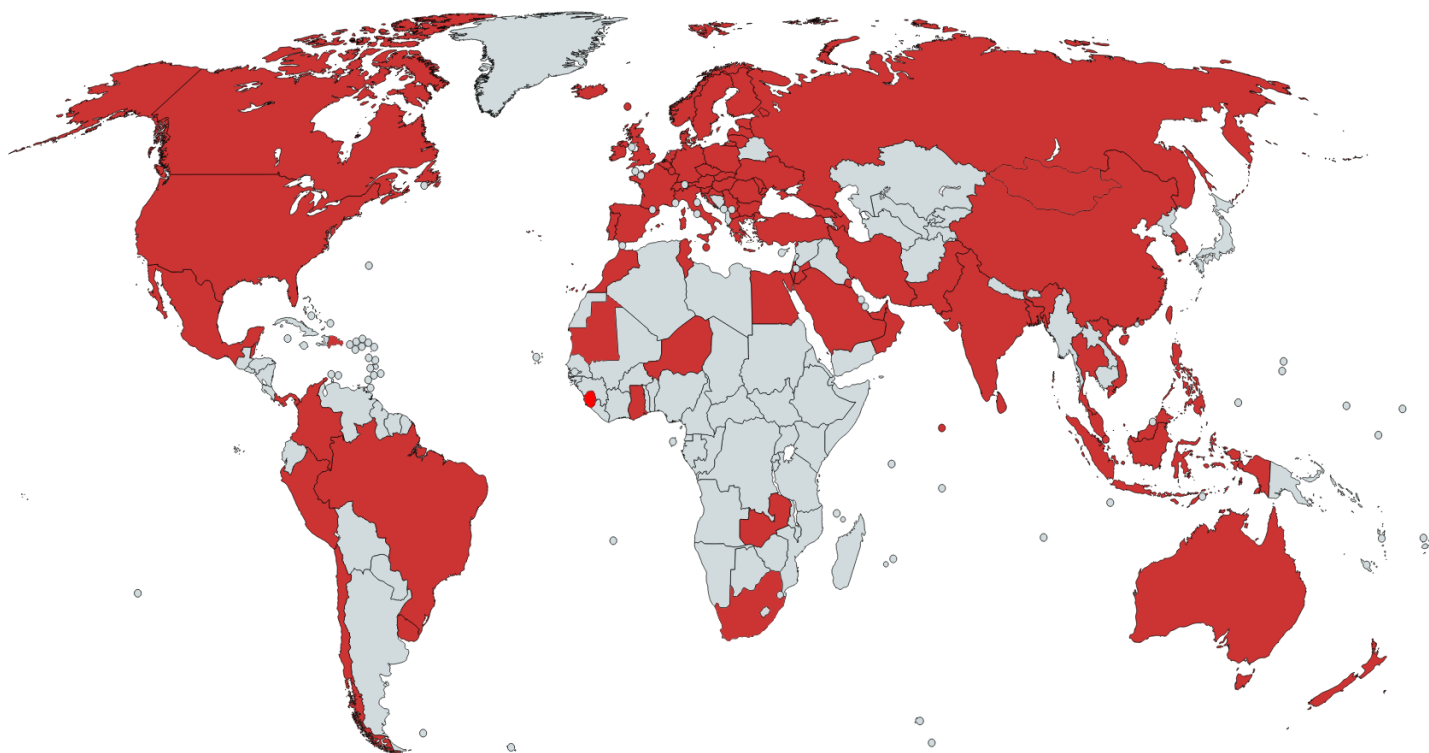
- 1 Toyoda Horizontal Factory Manufacturing System
dedicated to aluminium machining with:
- 360 tools warehouse - 20 positions Fastems pallet warehouse -



- 1 Toyoda Horizontal Factory Manufacturing System
dedicated to steel machining with:
- 504 tools magazine - 16 positions Fastems pallet warehouse -



We have customers in over 60 countries
Abbiamo clienti in più di 60 paesi
Nous avons des clients dans plus de 60 pays
Wir haben Kunden in über 60 Ländern
Tenemos clientes en más de 60 países
Imamo kupce u više od 60 zemalja
Kami memiliki pelanggan di lebih dari 60 negara
Við höfum viðskiptavini í yfir 60 löndum
Mes turime klientų daugiau nei 60 šalių
Vi har kunder i over 60 land



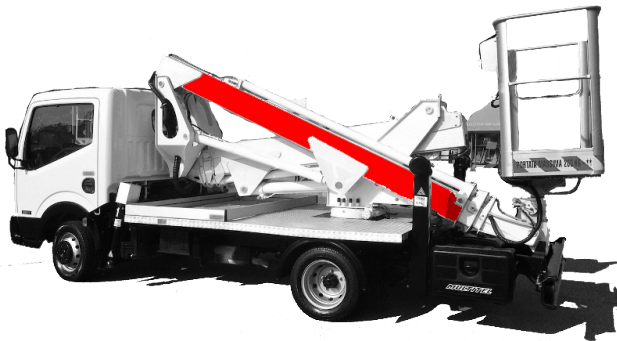
Wij hebben klanten in meer dan 60 landen
Mamy klientów w ponad 60 krajach
Temos clientes em mais de 60 países
Avem clienti in peste 60 de tari
У нас есть клиенты в более чем 60 странах мира
Máme zákazníkov vo viac ako 60 krajinách
Vi har kunder i över 60 länder
Biz 60 ülkede müşterileri var
У нас є клієнти в більш ніж 60 країнах світу
Jelenleg az ügyfelek több mint 60 országban

Mobile

Self-propelled machine



Aerial platforms



Sweeper



Loaders and hooklifts



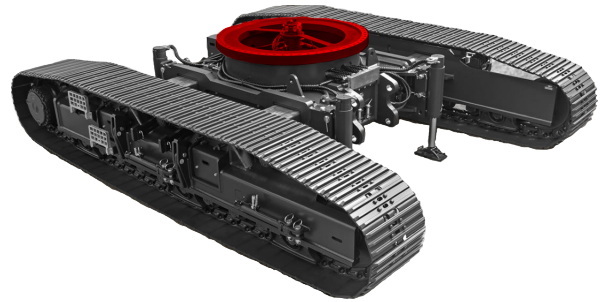
Waste collection



Recovery vehicles



Crawler undercarriage



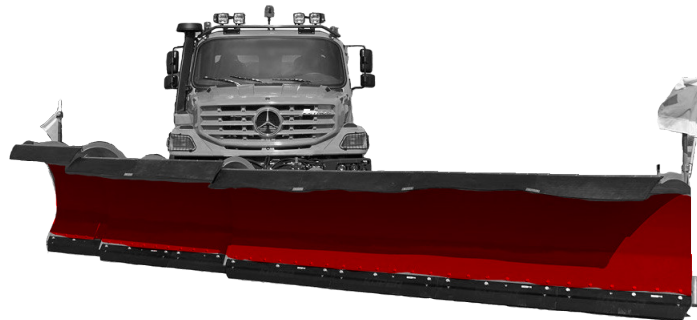
Shipbuilding



Rock drill



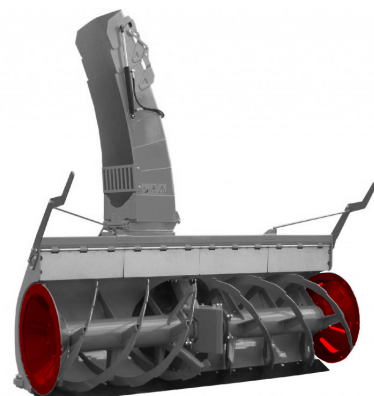
Snow plough blades



Salt spreader

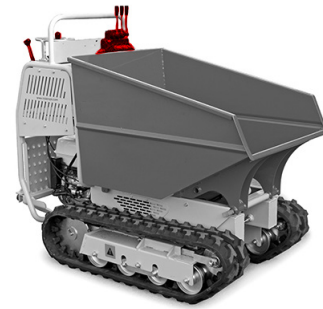


Snow blower turbine





Tracked vehicles



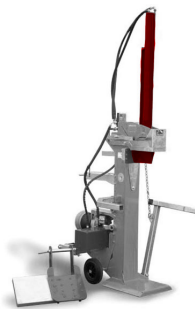
Agricultural arm shredder



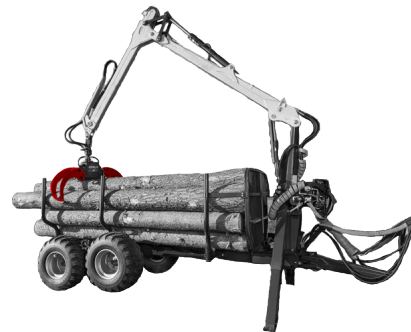
Brush cutter arm



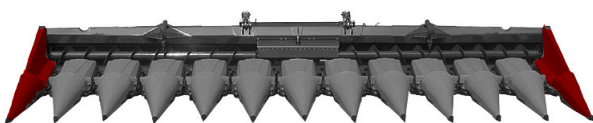
Wood splitter



Forest industry



Harvesting bar equipment

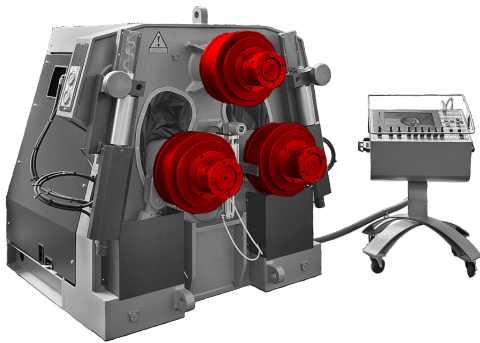


Haymaking machinery

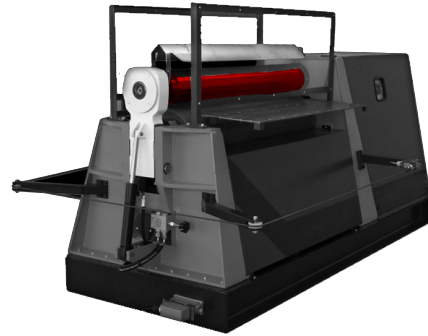


Industrial

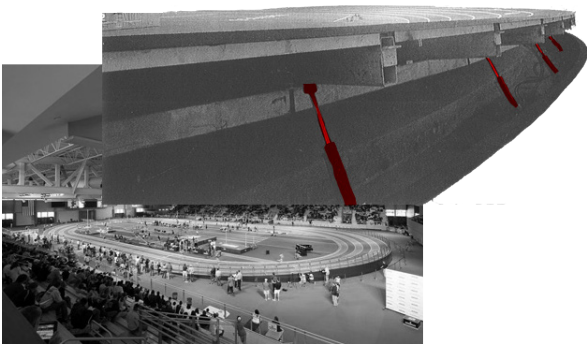
Bending machine



Calendering machines



Tracks for sport activities



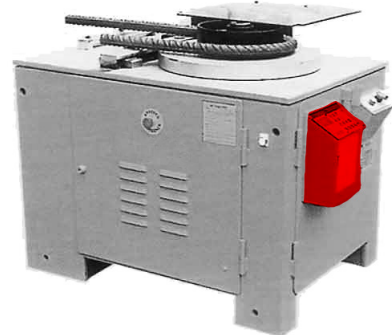
Machining centres CNC



Kneading machines



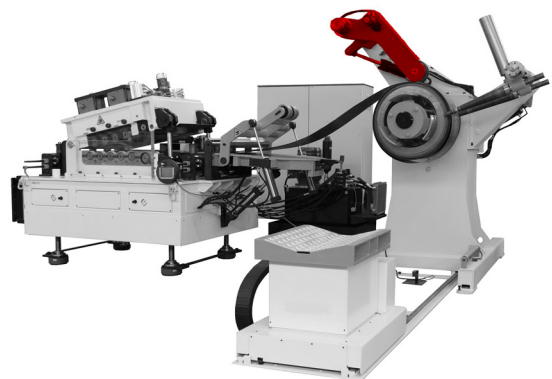
Equipment for rods processing



Glass processing machines

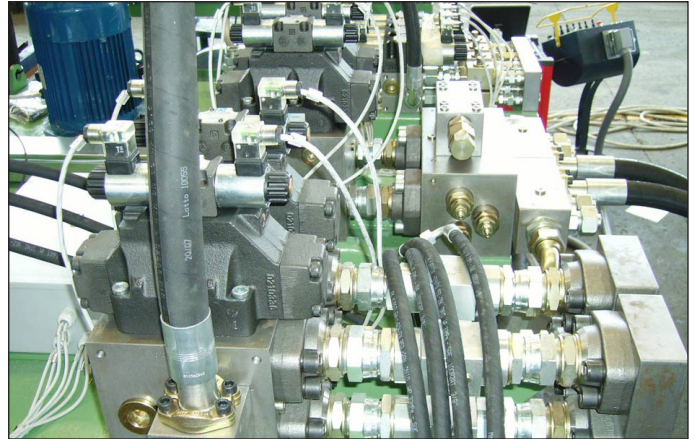
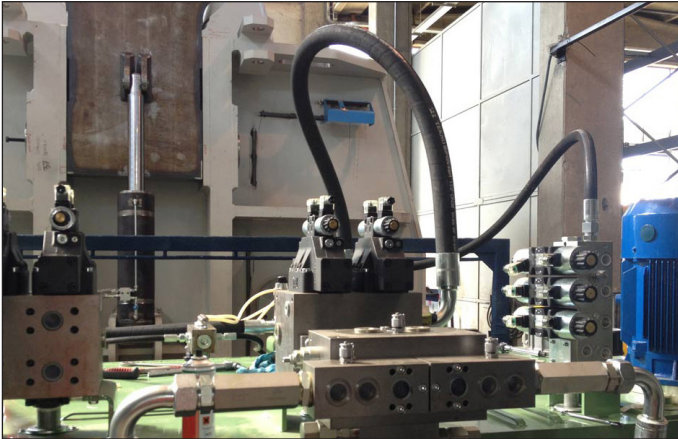


Production lines



Customs projects account for more than 50% of our turnover
 Here are some examples

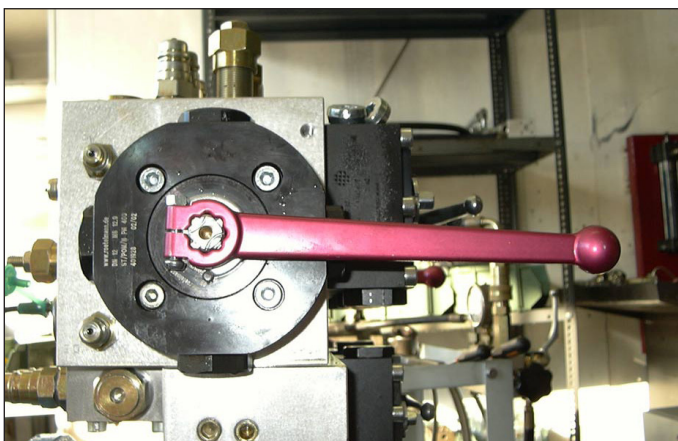
Blocks for calendering machines



Bosch Rexroth directional valves



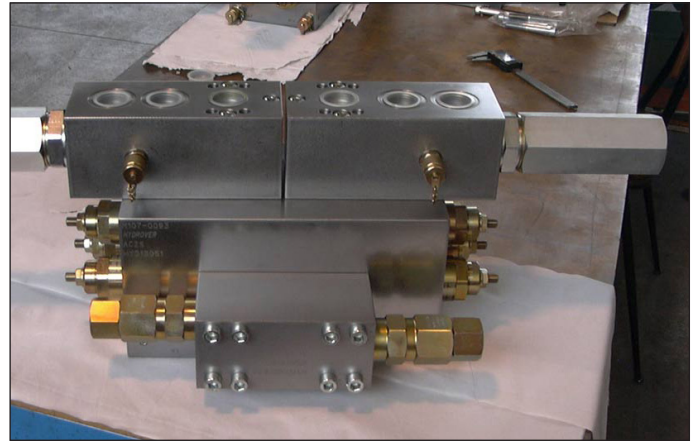
Blocks for Lifting and self-propelled steering



Swivel joints



Rotary control valve 750 lpm



Power packs blocks for naval field



Valves for stabilizers



Cetop 2 blocks



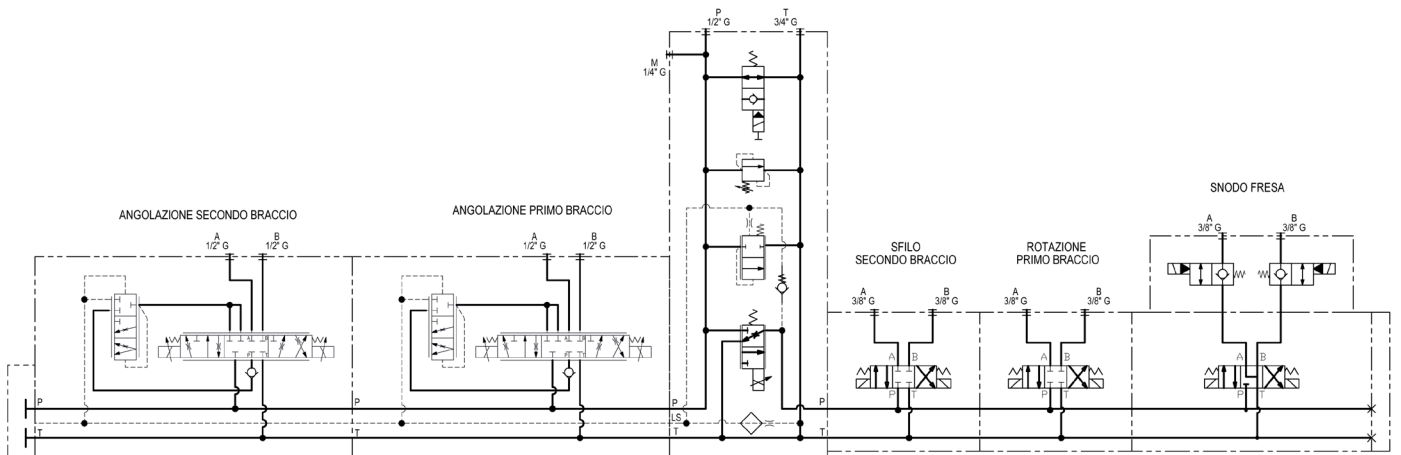
Cetop 3 blocks



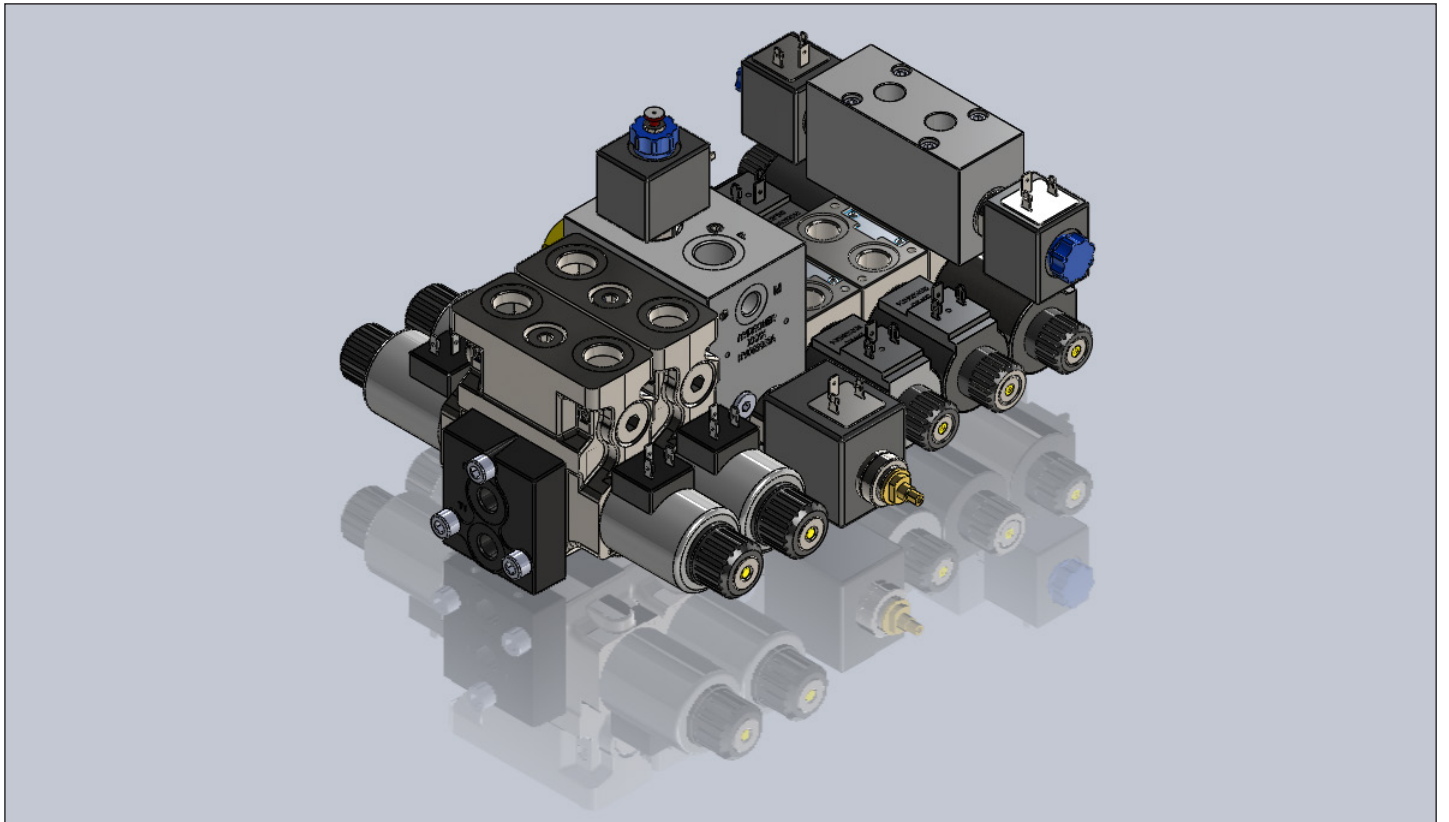
Project example *Brush cutter arm*



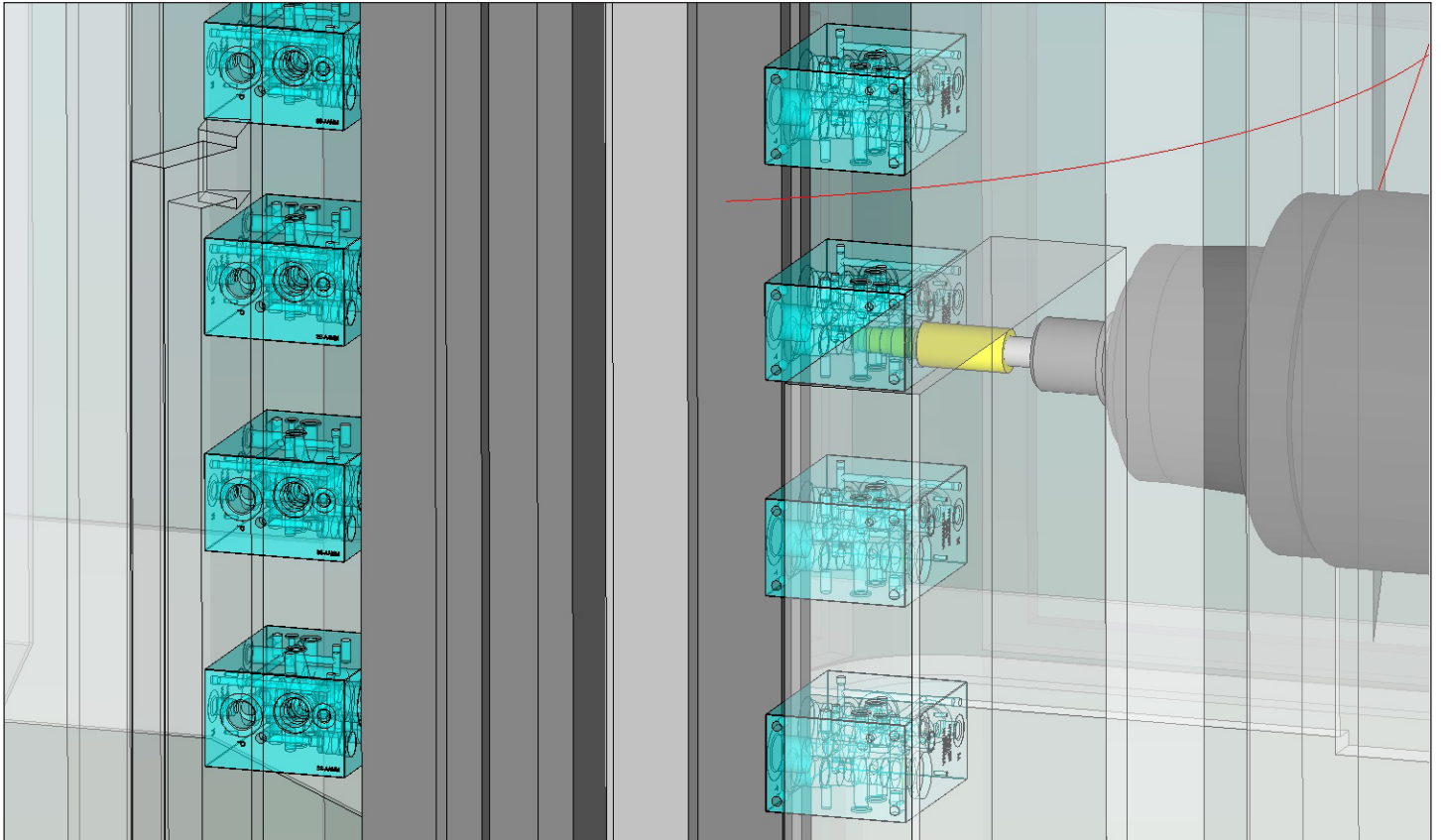
Hydraulic diagram definition



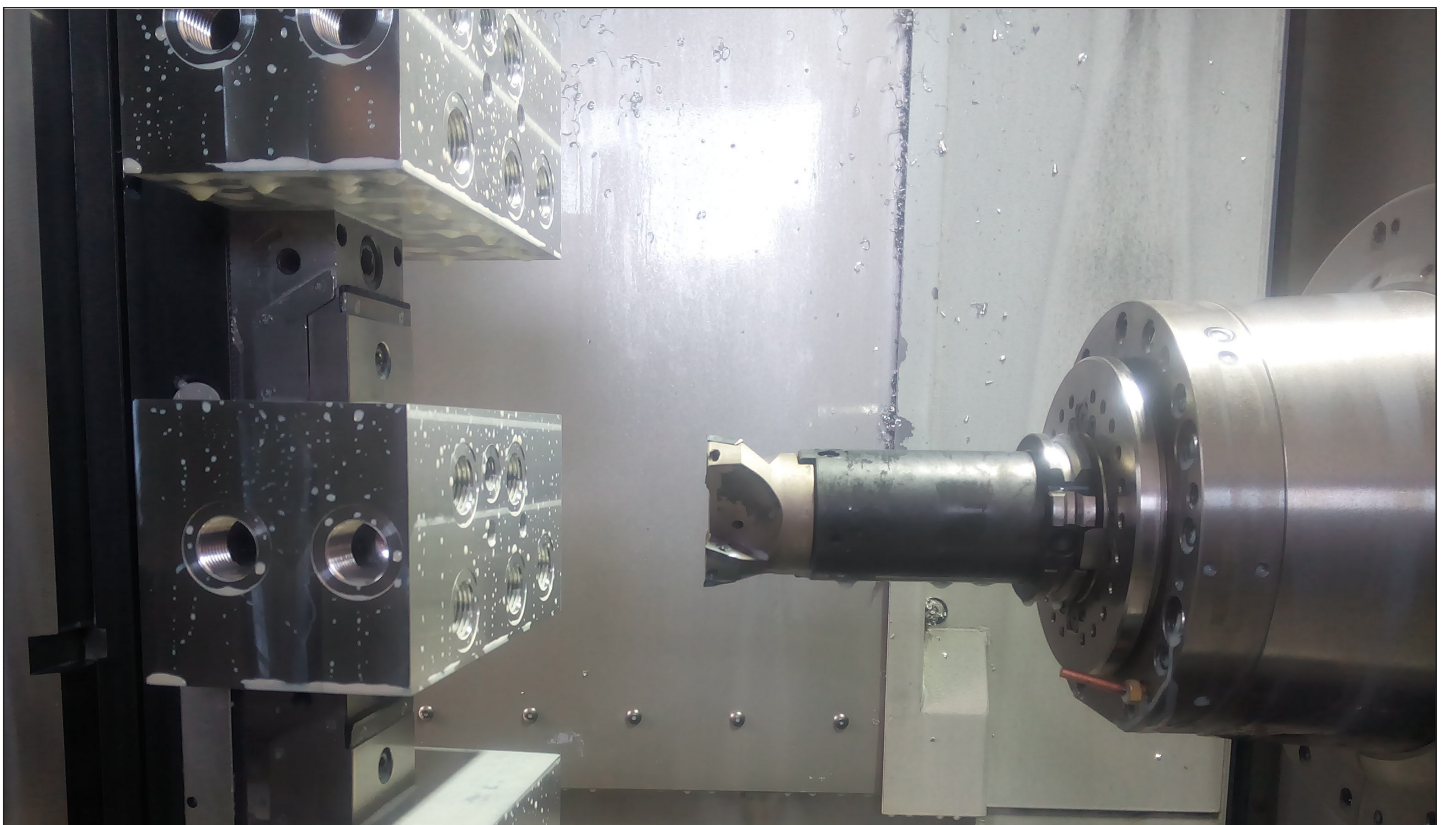
3D design



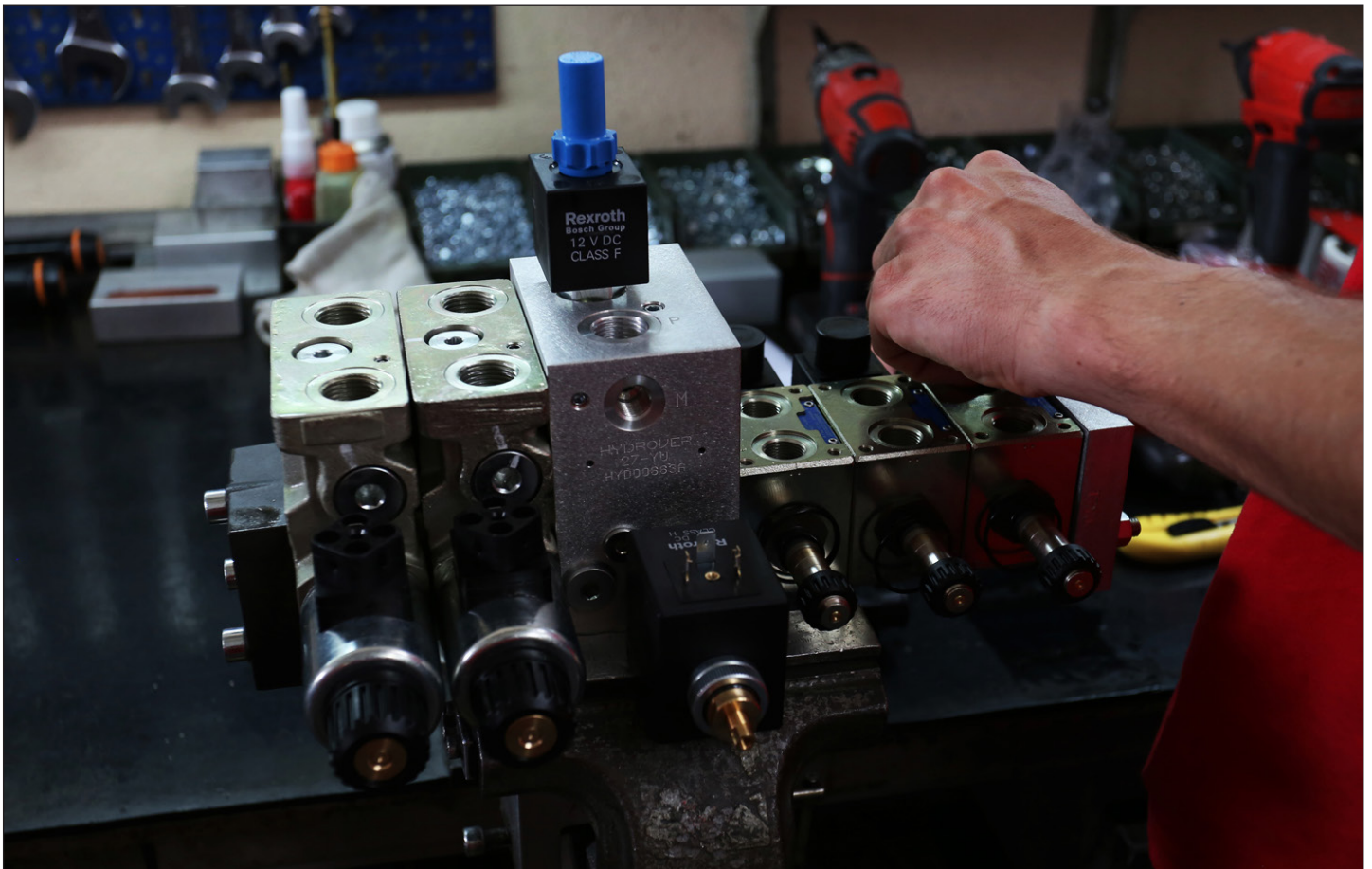
Machining simulation with CAD/CAM





Machining




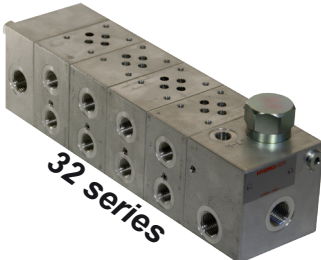
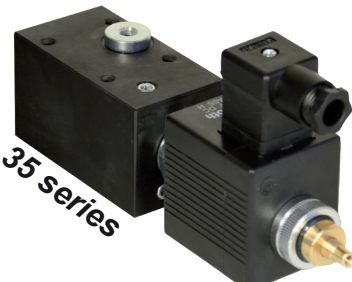
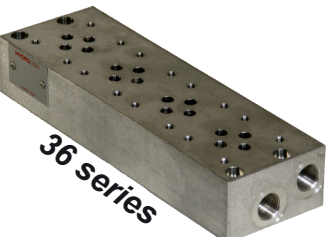
Assembly and Test




Inline manifolds

| Multi ports manifolds | Inline valves |
|--|---|
| <ul style="list-style-type: none"> • For oil discharge • Custom  <p>16 series</p> | <ul style="list-style-type: none"> • Pressure relief • Regenerative • Quick unloading • Flow regulation • Pump bypass • Fast slow speed • Bypass and pressure relief • Float  <p>17 series</p> |



Cetop 3 products

| Modular subplates | Load sensing modular subplates |
|---|--|
| <ul style="list-style-type: none"> • Inlet plates with bypass and relief valves, flow control valves. • Intermediate subplates with back and side A/B ports • Standard and high flow versions.  <p>31 series</p> | <ul style="list-style-type: none"> • For variable displacement pump • For gear pump • Intermediate subplates also with with 2 way compensated flow control, double effect operated check valves  <p>32 series</p> |
| Solenoid valves | Subplates |
| <ul style="list-style-type: none"> • Flow control • Pressure control • P in A o P in B  <p>35 series</p> | <ul style="list-style-type: none"> • Single station also with relief valve • Multi station also with bypass and relief valve • Closing plates  <p>36 series</p> |

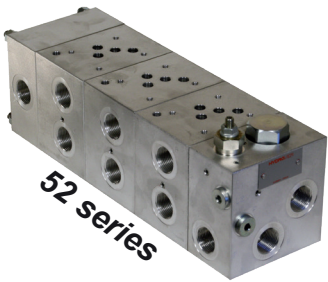
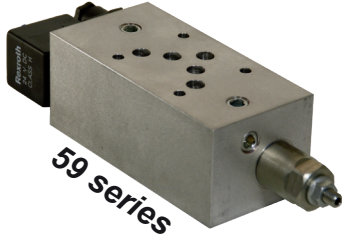
Modular valves

| | |
|--|---|
| <ul style="list-style-type: none"> • Pressure relief • Sequence • Back pressure relief • Pressure reducing • For pressure switch • Overcenter • Flow regulation • Poppet type solenoid operated directional valves • Bypass and relief • Fast slow speed • Check valves • Additional ports |  <p>39 series</p> |
|--|---|

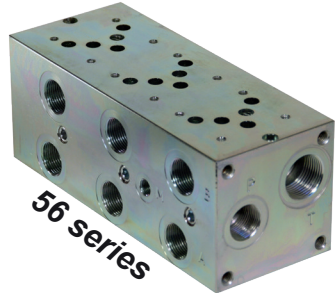
Products for ED Bosch Rexroth directional valves

| Inlet and closing plates | Flangeable elements |
|---|--|
| <ul style="list-style-type: none"> • Up to 60 lpm • Also with bypass, relief valve, fast slow speed. • Load sensing versions  <p>41 & 42 series</p> | <ul style="list-style-type: none"> • Massima pressione • Piloted operated check valves • Flow regulation • Overcenter  <p>49 series</p> |


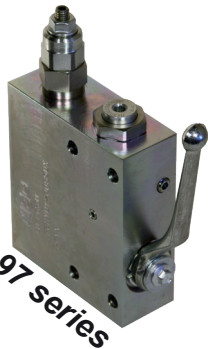
Cetop 5 products

| Load sensing subplates | Modular valves |
|---|--|
| <ul style="list-style-type: none"> • Inlet up to 250 lpm • For variable displacement pump • For gear pump with Per pompa a portata fissa con ΔP variabile o fisso  <p>52 series</p> | <ul style="list-style-type: none"> • Pressure relief • Rigenerative • Poppet type solenoid operated directional valves • Bypass and relief • Flow regulation • Fast slow speed  <p>59 series</p> |

Subplates

| | |
|--|--|
| <ul style="list-style-type: none"> • Single station also with relief valve • Multi station also with bypass and relief valve • Closing plates |  <p>56 series</p> |
|--|--|

Multifunctional integrated circuits

| | |
|--|--|
| <ul style="list-style-type: none"> • Double sequence circuit • Rigenerative block up to 300 lpm • Rotation control • Single acting cylinder control • Dual pump unloading • Feeds management block for variable displacement pump • Custom blocks |  <p>97 series</p>  <p>97 series</p> |
|--|--|

Bosch Rexroth Oil Control official dealer



| | | |
|---|--|--|
| A collection of several mechanical cartridge valves of various sizes and configurations, some with red and blue handles. | <p>Mechanical cartridge valves</p> | <ul style="list-style-type: none"> • Pressure relief • Sequence • Overcenter • Check valves • Flow regulation |
| A collection of solenoid-operated cartridge valves, including a black solenoid coil and several metal valve bodies with blue handles. | <p>Solenoid operated cartridge valves</p> | <ul style="list-style-type: none"> • On-off and proportional • From 10 lpm to 250 lpm • Operating pressure up to 350 bar |
| A single Cetop valve with a blue body and a black solenoid coil. | <p>Cetop</p> | <ul style="list-style-type: none"> • Cetop 2 • Cetop 3 • Cetop 5 • Cetop 7 |
| An ED directional valve with a silver metal body and a black solenoid coil. | <p>ED directional valves</p> | <ul style="list-style-type: none"> • One flange • From 25 lpm to 80 lpm • Operating pressure up to 310 bar • Standard, load sensing and also flow sharing • Available con lever operated override |
| A flow diverter valve with a silver metal body and a black solenoid coil. | <p>Flow diverters</p> | <ul style="list-style-type: none"> • From 20 lpm to 220 lpm • Operating pressure up to 310 bar • 3 or 6 ways • Available also bankable |
| A power pack unit consisting of a black tank, a silver motor, and various hydraulic components. | <p>Power packs</p> | <ul style="list-style-type: none"> • Displacements from 0,18 cm³/rev. to 9,9 cm³/rev. • Operating pressure up to 300 bar • CC motors from 50 W up to 3000 W • AC motors from 90 W up to 4000 W • Tanks from 0,5 l to 60 l |

HYDROVER

Bosch Rexroth Oil Control official dealer

rexroth
A Bosch Company

Operational and legal headquarters

HYDROVER S.r.L.

Via Torrette, 45 - 12010 BERNEZZO (CN) Italy

Tel. +39 0171/857366 - Fax +39 0171/857659

European VAT IT02449930045

Cuneo CCIAA Rea n. 176832

Company capital € 10.000,00

email: info@hydrover.it - Web: www.hydrover.it