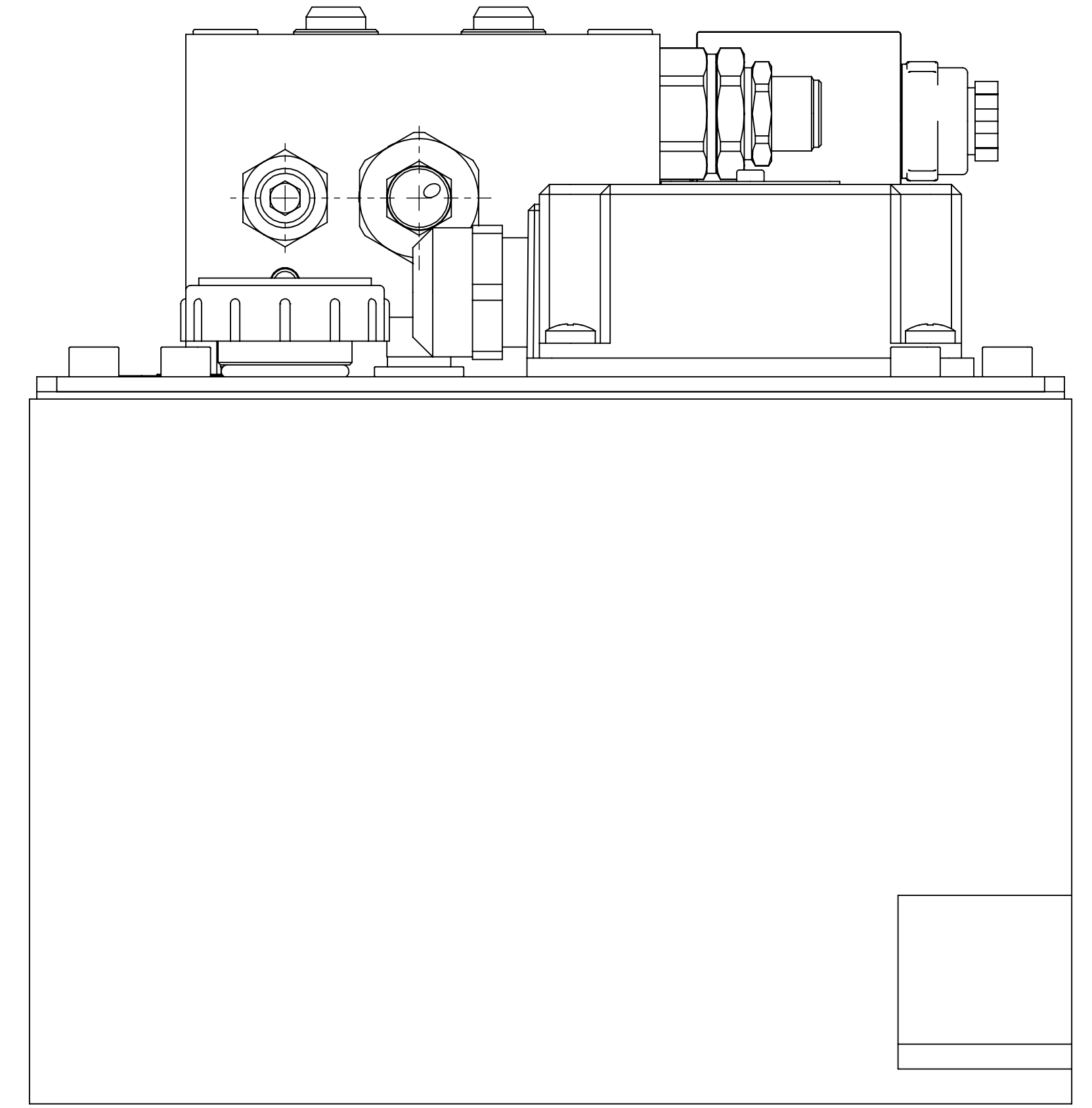
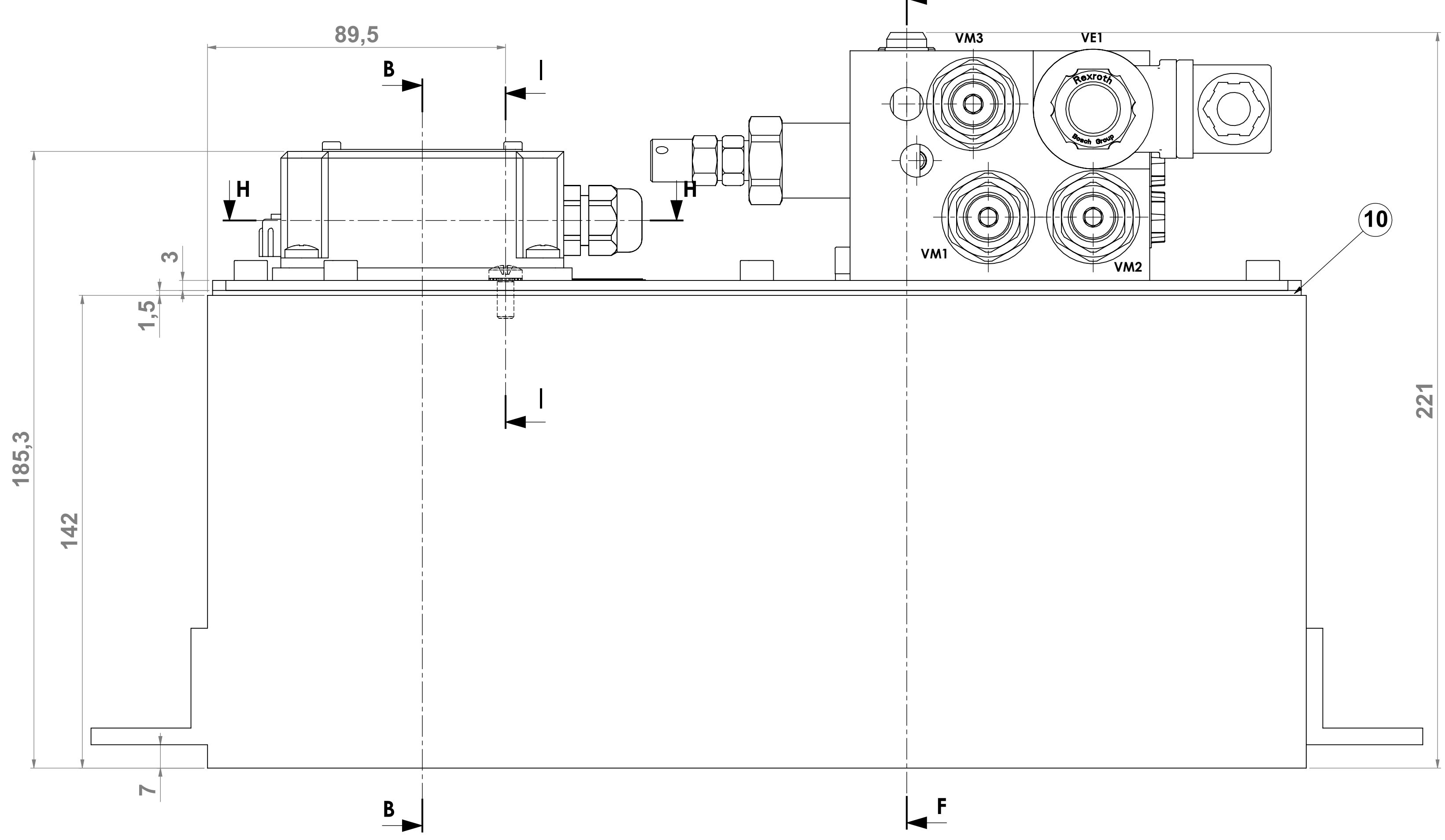
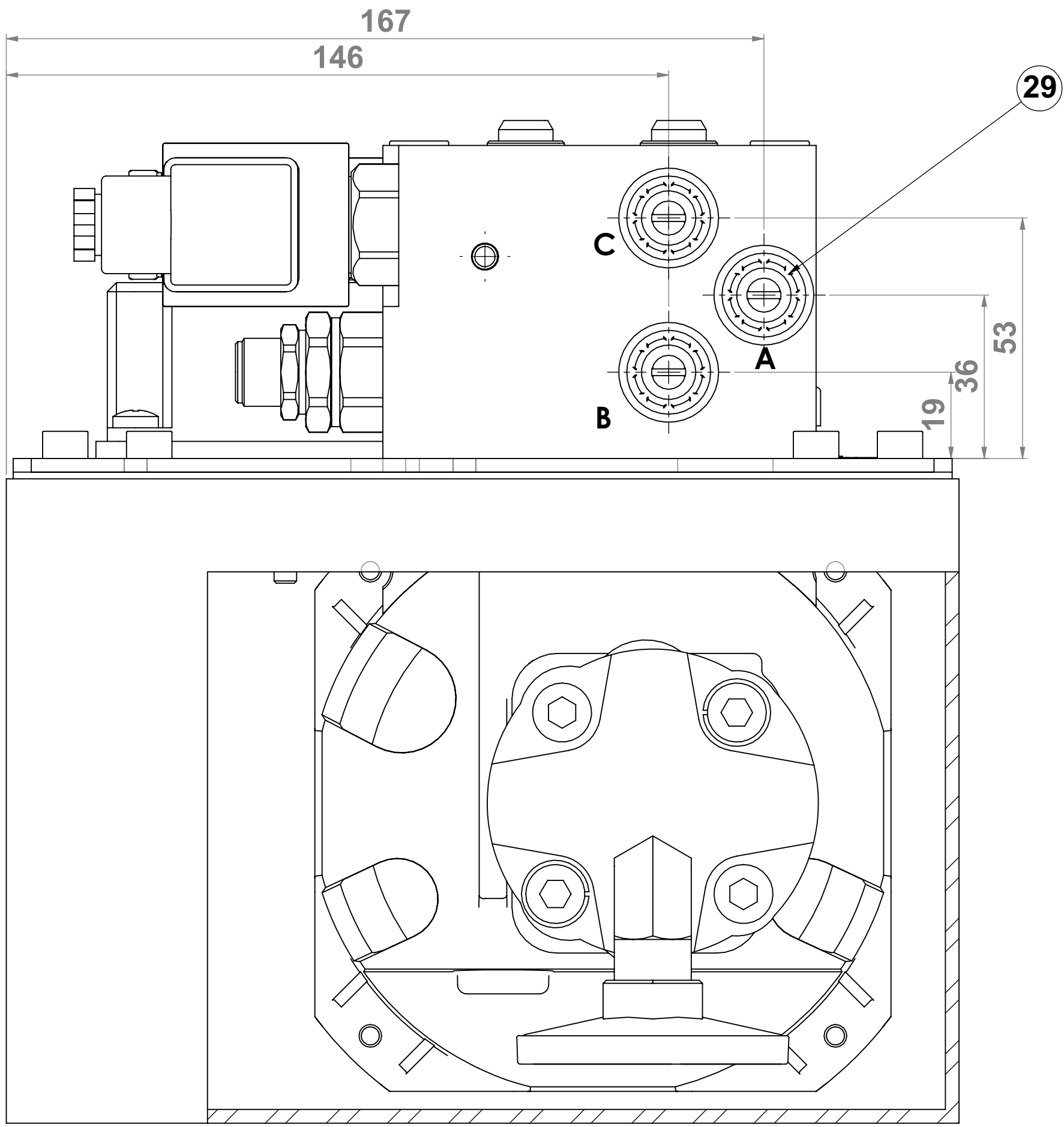
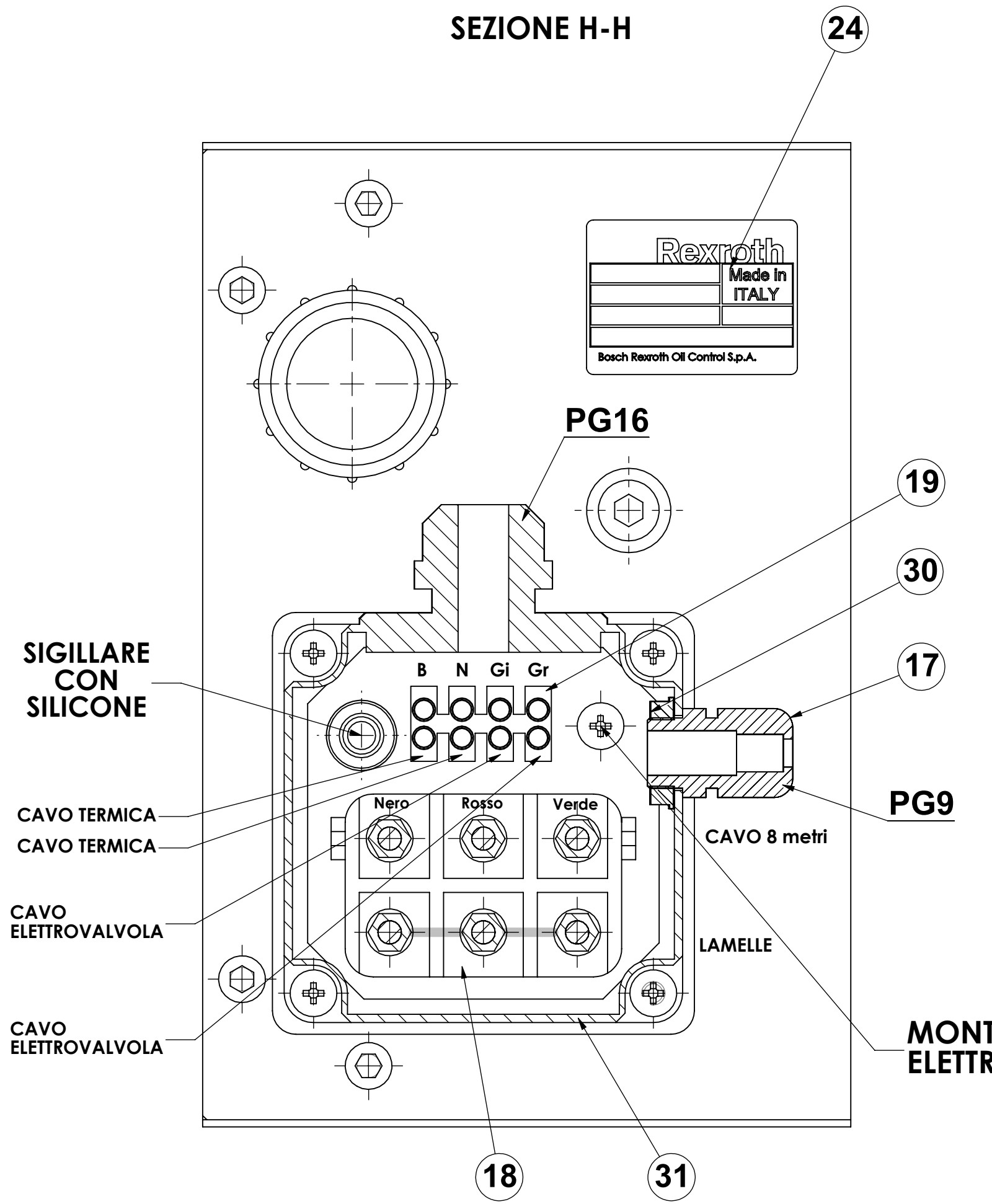
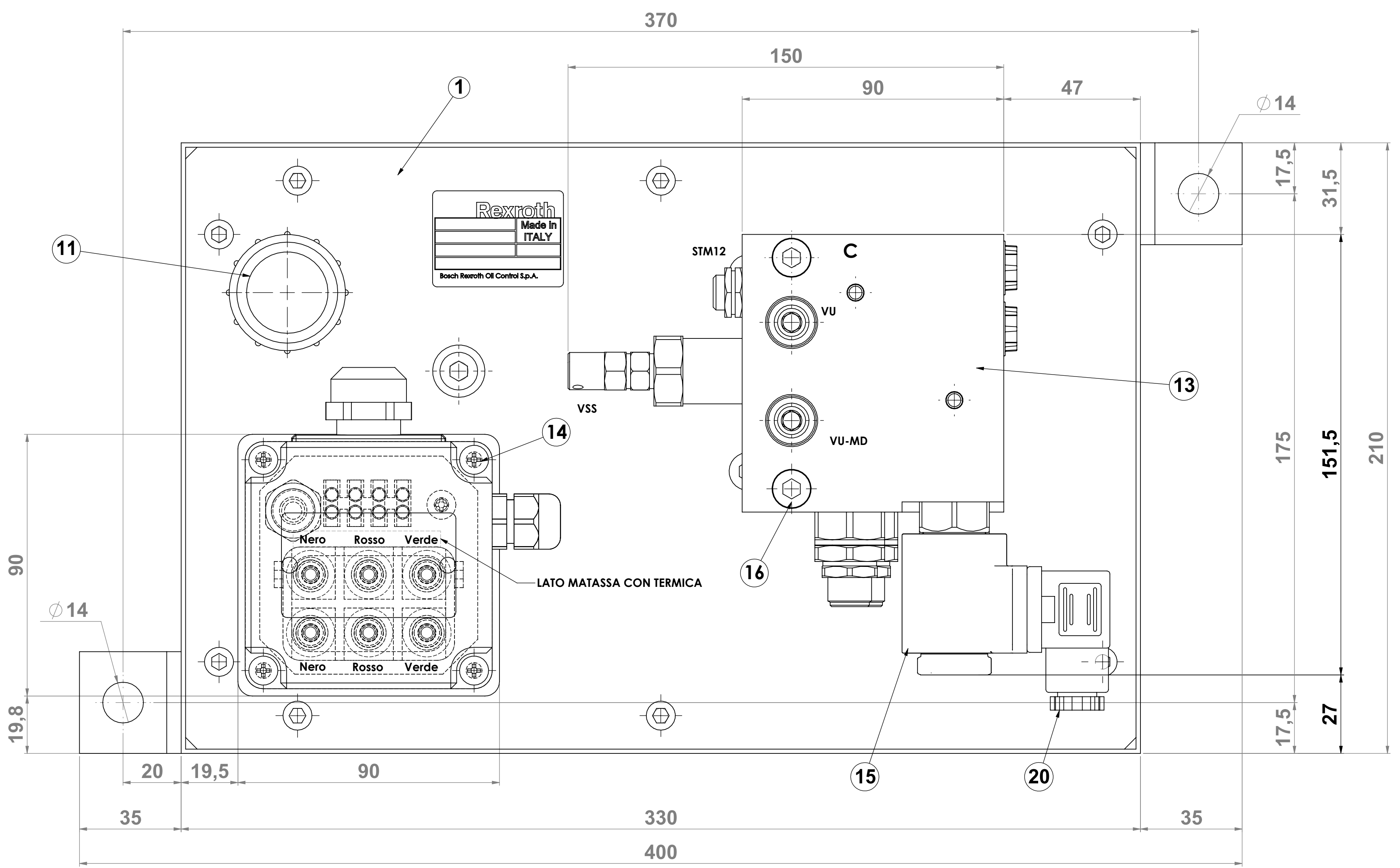
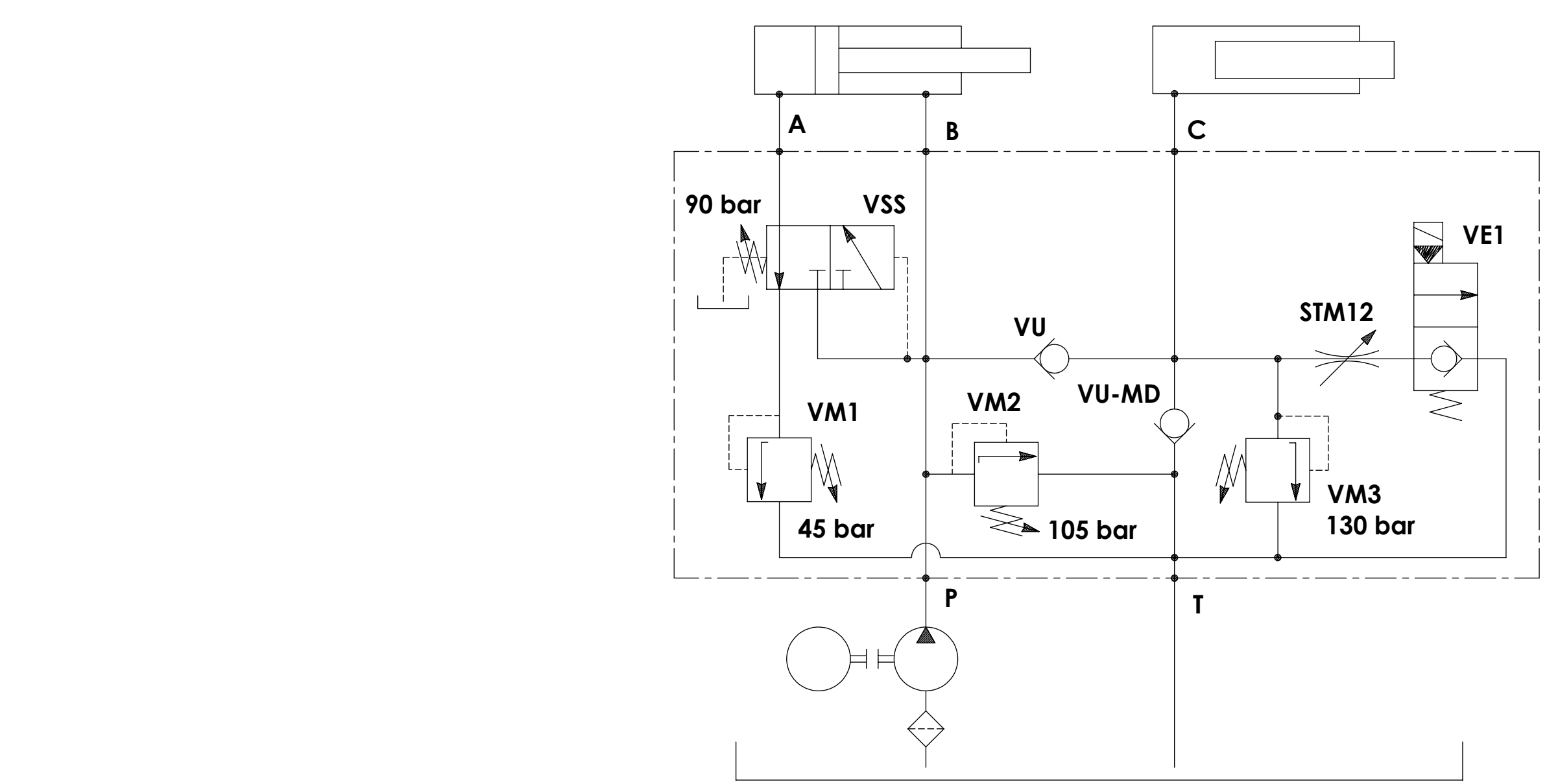


ATTENZIONE: montare il tubo di aspirazione su pompa prima di avvitare la pompa sul motore.



CABLARE ALL'INTERNO DELLA SCATOLA COPRIMORSETTIERA I 2 CAVI DELLA TERMICA E I 2 CAVI DELL'ELETTROVALVOLA SUL MORSETTO MAMMUT CODICE F2.671.22.000



Pos.	Qty	Code	R-Number	Apache code	Description	Torque
1	1	P222752069			Steel Cover	
2	1	C16230800	R93000506		Electric motor T.P. Ø125 Ø 75 kW 230-400V Tr.5w	
3	1	C01300000			Washer 8.4x16x1.0M174	
4	1	K202518000	R930046747		Back-up ring 119x15x2.3	
5	1	C00112000	R930030576	1160270610000000	O ring GR 112 (18.5x2.6)	
6	1	11020106000000	R930006621	1102010600000000	Seal Orl. 305x (13.5x2.62) NBR70	
7	4	C012514000	R930007763		Washer GB-2 DIN 1790	
8	1	C010304000	R930008931		Screw TCEI M6x8 L6 UNI 5931	25-30 Nm
9	3	C010302000	R930008937		Screw M6x16-8 L UNI 5931	25-30 Nm
10	1	P226114000			Gasket for cover steel tank	
11	1	C169111000			Filter cap 1/2" BSPF with dipstick L= 60 mm	
12	8	C010317000			Screw TCEI M6x8 L6 UNI 5931	8-11 Nm
13	1	C09631000A	R930061802		VP 15 block 5.4x1.0 E. Gear series	
14	5	C010301000			Screw M6x4-8 L UNI 5931	
15	1	C0002601300000	R901103577		CDL 30-A4-20024_02	
16	2	C010304000	R930006628		Screw TCEI M6x8 L6 UNI 5931	25-30 Nm
17	2	C166814000			Cone Nipol SKINTOP PG9	
18	1	C167107000			terminal block	
19	1	C010312000			Terminal block	
20	1	C169001300			Connector	
21	1	C012518000			Servicel separator 100 washers	
22	2	C010306000	R930010740		Screw TCEI M6x8 L6 UNI 5931	25-30 Nm
23	2	C012514000	R930006374		Washer GB-4 UNI 1791	
24	1	K20370500A			Product identification plate	
25	1	C1640100HP			Clean pump HP1 S40 2-6-A (2.60cwhv) [14]	
26	1	K234052004	R930002250		Suction pipe 3/8" BSPF (ø=32) for gear pump Gr 1	
27	1	P226102432			Steel tank 4 liters	
28	1	K22673000	R930008247		Suction filter 60 micron Ø63 - 3/8" BSPF INOX	2±2.5 Nm
29	3	C011902000	R930007348		Plastic protection plug 1/4" BSPF	
30	1	P226140000			Nut for pump	

**Centralina per rampa serie GOLD**

**Rexroth**  
Bosch Group  
Bosch Rexroth Oil Control S.p.A.

Ufficio Tecnico  
Technical Department  
Garanzia Prodotto  
Product Warranty  
876429761

Massa / Mass (kg)      Cliente e codice articolo  
Customer and article code  
Richiesta / Request      Num. schema idraulico / Hydraulic scheme no.  
Studio di riferimento / Reference study      Modifiche / Changes  
Specificazioni / Specifications      Riferimenti / References

ECR 30975      A0      Disegnato / Designed by      Rossi V. / Data / Date 25-07-2016  
Verificato / Checked by      Rossi R. / Scala / Scale 1:1

Direttore del file Cad / Cad file directory      Materiale / Material  
R930061899

Rev. 01 del 15/12/20