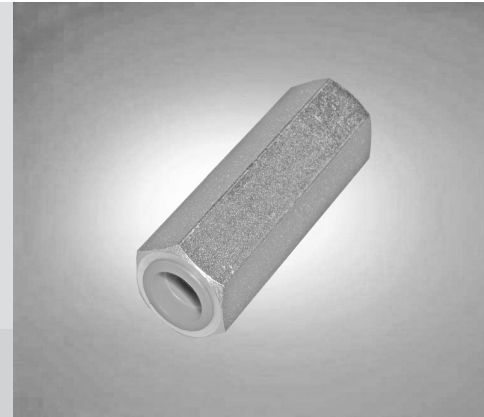
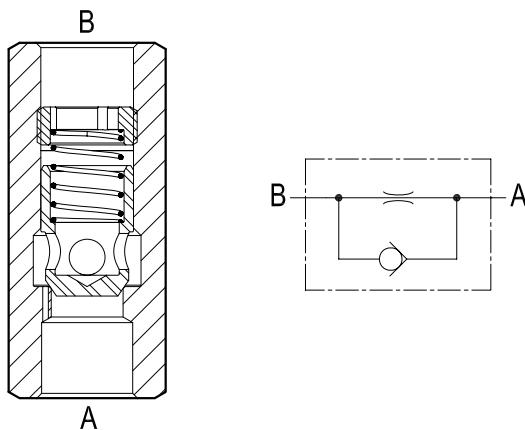


Flow control valves

Fixed orifice restrictors with poppet type reverse flow check



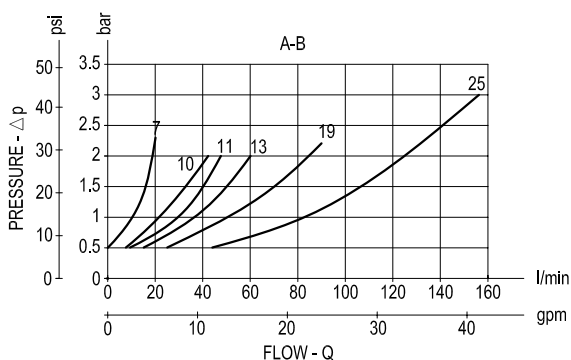
SF Series



Description

This line mounted valve provides a one-way fixed type restriction, in B-A direction. It has no pressure compensation and flow depends from pressure drop and oil viscosity. Free flow is allowed from A to B by an incorporated check valve, when pressure at A rises above the spring bias pressure and the poppet is pushed from the seat.

Performance



Δp curves vs. flow in "A-B" free flow direction (refer to the specific table).

Cracking pressure is always 0,5 bar.

Different size orifices, (with ID $\geq 0,4$ mm) are available.

The orifice ID must be specified when ordering (see order code).

Technical data

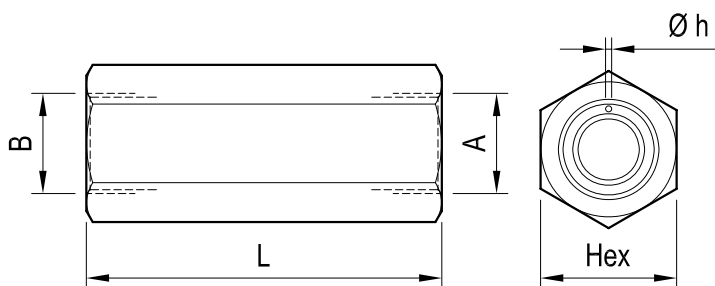
Code	Pressure P max bar (psi)	Flow Q max l/min (gpm)	Weight kg (lbs)
SF 7	350 (5000)	25 (7)	0.10 (0.22)
SF 10	350 (5000)	50 (13)	0.18 (0.40)
SF 11	350 (5000)	50 (13)	0.18 (0.40)
SF 13	350 (5000)	80 (21)	0.22 (0.49)
SF 19	250 (3600)	100 (26)	0.48 (1.06)
SF 25	250 (3600)	160 (42)	0.93 (2.05)

Steel body, zinc plated

Advantages

- Compact design and inline mounting for space saving.
- Six sizes provide great adaptability to the system.
- Cost effectiveness.
- Mounting position is unrestricted.
- Low Δp in the free flow direction.

Dimensions



Ports size / Dimensions

Code	Ports size A-B	Hex mm (inches)	L mm (inches)
SF 7	G 1/4	19 (0.75)	62 (2.44)
SF 10	G 3/8	24 (0.95)	70 (2.76)
SF 11	M18x1.5	24 (0.94)	70 (2.76)
SF 13	G 1/2	27 (1.06)	79 (3.11)
SF 19	G 3/4	36 (1.42)	94 (3.70)
SF 25	G 1	46 (1.81)	114 (4.49)

Applications

In a variety of cases when a one-way restrictor is needed like building-up some back pressure at the discharge side of of an hydraulic motor.

Ordering code

SF		/	**
----	--	---	----

series 7	= 7
series 10	= 10
series 11	= 11
series 13	= 13
series 19	= 19
series 25	= 25

Specify the orifice bore in mm (min 0.4)

Cracking pressure (free flow) is always 0.5 bar (7.25 psi)

Type	Material number	Type	Material number	Type	Material number
SF 7/0.5	R932500585	SF 11/1.5	R932006944		
SF 7/0.8	R932500588	SF 11/2	R932006945		
SF 7/1	R932500590	SF 13/0.5	R932006947		
SF 7/1.5	R932006941	SF 13/1	R932500598		
SF 7/2	R932006942	SF 13/1.5	R932006962		
SF 10/0.5	R932500591	SF 19/1	R932500599		
SF 10/0.8	R932500593	SF 19/1.5	R932006949		
SF 10/1	R932500594	SF 25/2	R932006950		
SF 10/2	R932500597	SF 25/3	R932006951		
SF 11/1	R932006943				