

Outlet Elements with additional inlet port P1 and tank port T1

TC-03-__-

RE 18301-63

Edition: 02.2016

Replaces: 07.2012



Description

The outlet elements TC-03-__ are employed to connect the P and T channels of the ED elements of the Directional Valve Assembly, and to provide additional inlet port P1 and tank port T1, both with size either G 3/8 or G 1/2.

The outlet elements TC-03-__ are available in two versions:

- Body made of Black Anodized Aluminium (AL).
- Body made of Yellow Zinc plated (Cr+3) Cast Iron (CI).

Technical data

| General | | |
|---|--------------------|--|
| Weight | kg (lbs) | 0.25 (0.56) |
| TC-03-02-..-AL element | | |
| Weight | kg (lbs) | 0.25 (0.56) |
| TC-03-03-..-AL element | | |
| Weight | kg (lbs) | 0.65 (1.43) |
| TC-03-02-..-CI element | | |
| Weight | kg (lbs) | 0.65 (1.43) |
| TC-03-03-..-CI element | | |
| Ambient Temperature | °C (°F) | -20....+50 (-4....+122) (NBR seals) |
| Hydraulic | | |
| Maximum flow in P and T | l/min (gpm) | 50 (13.2) |
| Maximum pressure for aluminium version (AL) | bar (psi) | 250 (3625) |
| Maximum pressure for Cast Iron version (CI) | bar (psi) | 310 (4500) |
| Hydraulic fluid | | Mineral oil based hydraulic fluids HL (DIN 51524 part 1). |
| General properties: it must have physical lubricating and chemical properties suitable for use in hydraulic systems such as, for example: | | Mineral oil based hydraulic fluids HLP (DIN 51524 part 2). For use of environmentally acceptable fluids (vegetable or polyglycol base) please consult us. |
| Fluid Temperature | °C (°F) | -20....+80 (-4....+176) (NBR) |
| Permissible degree of fluid contamination | | ISO 4572: $\beta_{x \geq 75} X = 12 \dots 15$ ISO 4406: class 20/18/15 NAS 1638: class 9 |
| Viscosity range | mm ² /s | 5....420 |

Note

For applications with different specifications consult us

Ordering details

| | | | |
|-----------|----|-----------|----|
| 01 | 02 | 03 | 04 |
| TC | - | 03 | - |

Family

| | | |
|----|-----------------|-----------|
| 01 | Outlet Elements | TC |
|----|-----------------|-----------|

Configuration

| | | |
|----|--|-----------|
| 02 | with additional inlet port P1 and tank port T1 | 03 |
|----|--|-----------|

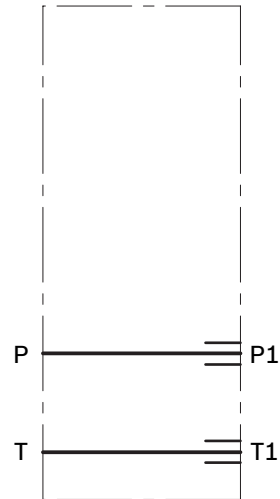
Ports

| | | |
|----|----------------|-----------|
| 03 | G 3/8 DIN 3852 | 02 |
| | G 1/2 DIN 3852 | 03 |

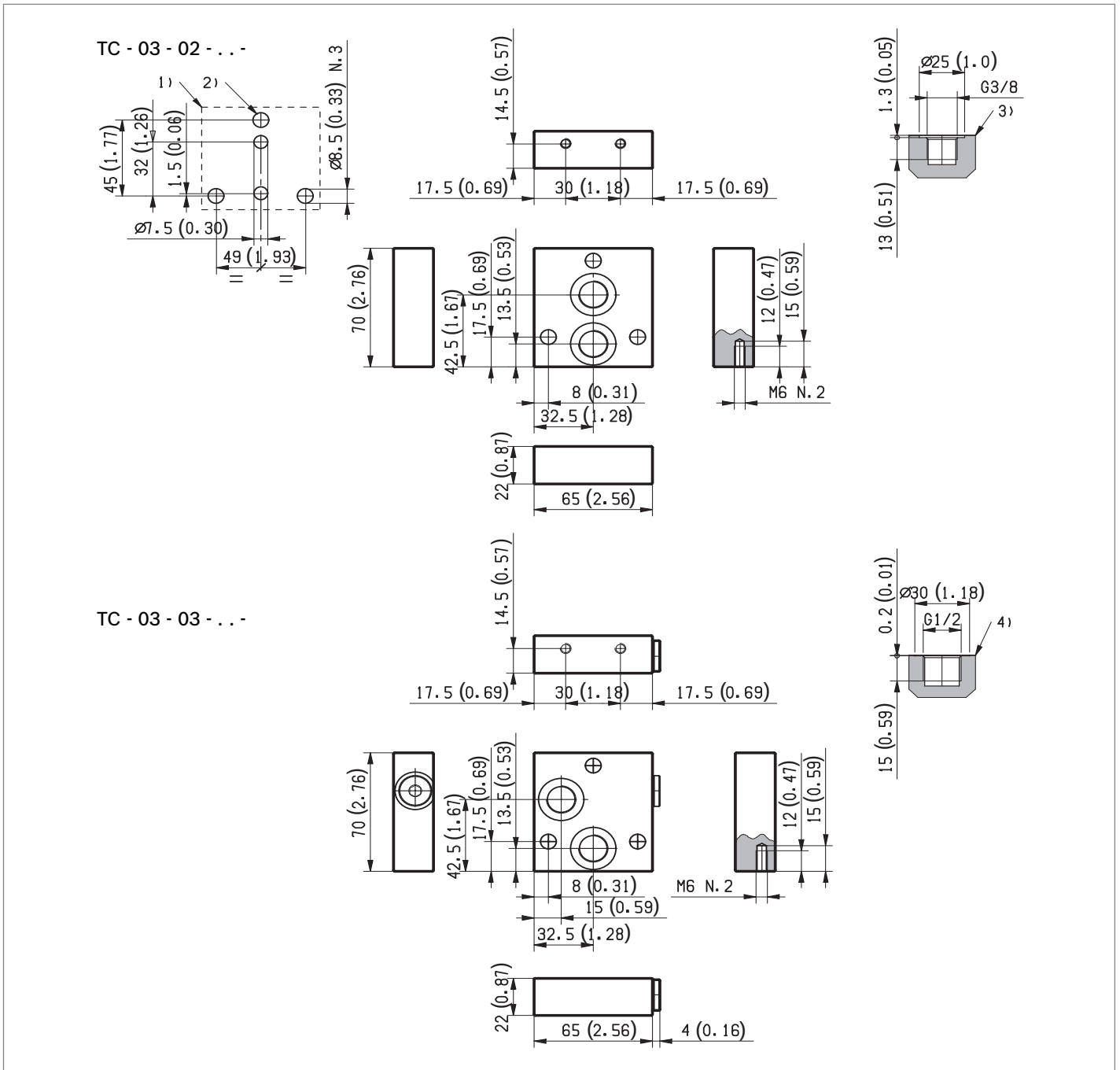
Material

| | | |
|----|-----------|-----------|
| 04 | Aluminium | AL |
| | Cast Iron | CI |

Symbol



External dimensions and fittings



- 1 Flange specifications for coupling to the ED Directional Valve Elements.
- 2 For tie rod and tightening torque information see data sheet RE 18301-90.

- 3 Hydraulic Ports P1 and T1 size G 3/8, for TC-03-02-...
- 4 Hydraulic Ports P1 and T1 size G 1/2, for TC-03-03-...

Bosch Rexroth Oil Control S.p.A.

Oleodinamica LC Division
Via Artigianale Sedrio, 12
42030 Vezzano sul Crostolo
Reggio Emilia - Italy
Tel. +39 0522 601 801
Fax +39 0522 606 226 / 601 802
compact-hydraulics-cdv@boschrexroth.com
www.boschrexroth.com/compacthydraulics

© This document, as well as the data, specifications and other information set forth in it, are the exclusive property of Bosch Rexroth Oil Control S.p.a.. It may not be reproduced or given to third parties without its consent. The data specified above only serve to describe the product. No statements concerning a certain condition or suitability for a certain application can be derived from our information. The information given does not release the user from the obligation of own judgment and verification. It must be remembered that our products are subject to a natural process of wear and aging.
Subject to change.