

# Inlet Elements with Primary Pressure Relief Valve

TE-01-\_\_-

**RE 18300-02**

Edition: 02.2016

Replaces: 07.2012



## Description

The inlet elements TE-01-\_\_ are employed to connect the external P and T lines to the P and T channels inside the ED elements of the Directional Valve Assembly. They incorporate a pressure relief cartridge which limits the maximum primary pressure in the P line and unloads to Tank any excess flow. The relief setting can be checked through the Test Point port M.

The TE-01-\_\_ inlet elements are available in two versions:  
 -Body made of Black Anodized Aluminium (Al), or  
 -Body made of Yellow Zinc plated (Cr+3) Cast Iron (CI).  
 Port sizes can be G 3/8, G 1/2 or SAE 8 (3/4" 16 UNF).

## Technical data

General			
Inlet Element Type		AL Version	CI Version
TE-01-02-00-	kg (lbs)	0.31 (0.67)	Not Available
TE-01-03-00-	kg (lbs)	0.49 (1.08)	1.23 (2.72)
TE-01-56-00-	kg (lbs)	0.49 (1.08)	Not Available
TE-01-02-S_-	kg (lbs)	0.44 (0.96)	Not Available
TE-01-03-S_-	kg (lbs)	0.66 (1.45)	1.36 (3.00)
TE-01-56-S_-	kg (lbs)	0.66 (1.45)	Not Available
Ambient Temperature	°C (°F)	-20....+50 (-4....+122) (NBR seals)	
Hydraulic			
Maximum pressure for aluminium version (AL)	bar (psi)	250 (3625)	
Maximum pressure for Cast Iron version (CI)	bar (psi)	310 (4500)	
Maximum inlet flow	l/min (gpm)	50 (13.2)	
Hydraulic fluid		Mineral oil based hydraulic fluids HL (DIN 51524 part 1).	
General properties: it must have physical lubricating and chemical properties suitable for use in hydraulic systems such as, for example:		Mineral oil based hydraulic fluids HLP (DIN 51524 part 2). For use of environmentally acceptable fluids (vegetable or polyglycol base) please consult us.	
Fluid Temperature	°C (°F)	-20....+80 (-4....+176) (NBR)	
Permissible degree of fluid contamination		ISO 4572: $\beta_{x \geq 75} X = 10 \dots 12$ ISO 4406: class 19/17/14 NAS 1638: class 8	
Viscosity range	mm <sup>2</sup> /s	5....420	

## Note

For applications with different specifications consult us

## Ordering details

01	02	03	04	05
<b>TE</b>	-	<b>01</b>	-	-

### Family

01	Inlet Elements	<b>TE</b>
----	----------------	-----------

### Configuration

02	With Primary Pressure Relief Valve	<b>01</b>
----	------------------------------------	-----------

### Ports

03	G 3/8 DIN 3852	<b>02</b>
	G 1/2 DIN 3852	<b>03</b>
	3/4-16 UNF-2B (SAE8)	<b>56</b>

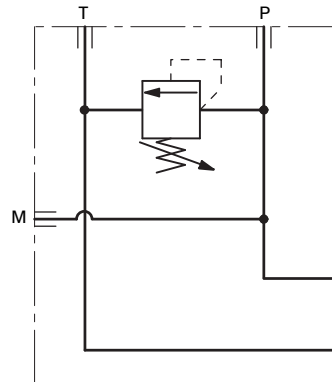
### Primary Pressure Relief range

04	Cavity without primary pressure relief valve (to be ordered separately)	<b>00</b>
	Pressure range 25-120bar (362-1740 psi)	<b>SN</b>
	Pressure range 40-200bar (580-2900 psi)	<b>SB</b>
	Pressure range 200-350bar (2900-5076 psi)	<b>SV</b>

### Material

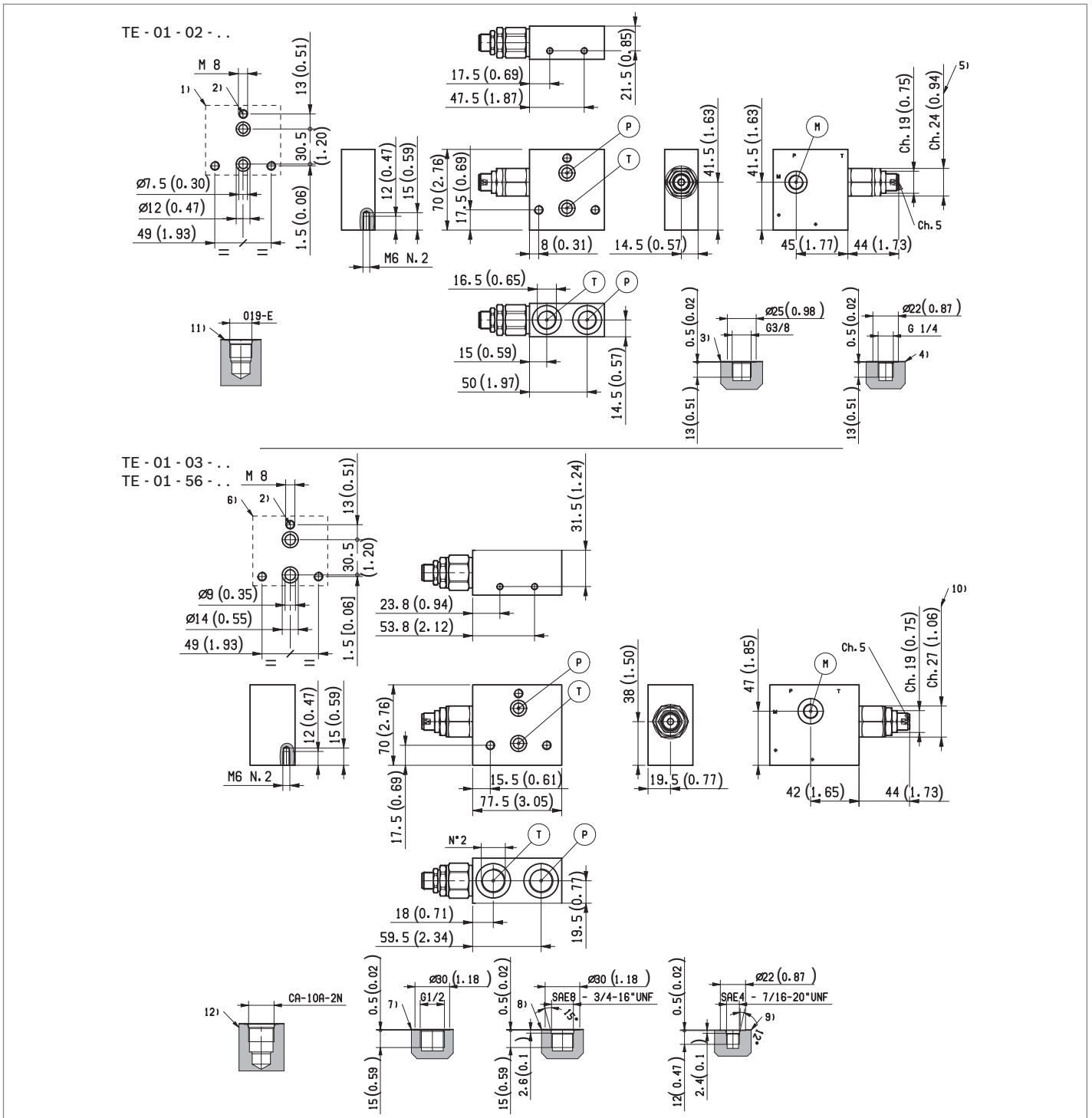
05	Cast Iron <sup>1)</sup>	<b>CI</b>
	Aluminium	<b>AL</b>

### Symbol



<sup>1)</sup> Only available for versions with G 1/2 ports (TE-01-03-...)

**External dimensions and fittings**



- 1 Flange specifications for coupling to the ED Directional Valve Elements (for Version TE-01-02...).
- 2 For tie rod and tightening torque information see data sheet RE 18301-90.
- 3 Hydraulic Ports P-T G 3/8, for Inlet Elements TE-01-02...
- 4 Test Point port (M) G 1/4, for Inlet Elements TE-01-02... and TE-01-03...
- 5 Primary Pressure Relief Cartridge VMD1025, with screw type adjuster (refer to RE 18301-91).

- 6 Flange specifications for fitting of the ED Directional Valve Elements. (Versions TE-01-03... and TE-01-56...).
- 7 Hydraulic Ports P-T G 1/2, for versions TE-01-03...
- 8 Hydraulic Ports P-T SAE 8, for versions TE-01-56...
- 9 Test Point port SAE 4, for versions TE-01-56...
- 10 Primary Pressure Relief Cartridge VMD1040, with screw type adjuster (refer to RE 18301-91).
- 11 Cavity for Primary Pressure Relief VMD1025.
- 12 Cavity for Primary Pressure Relief VMD1040.

**Bosch Rexroth Oil Control S.p.A.**

Oleodinamica LC Division  
Via Artigianale Sedrio, 12  
42030 Vezzano sul Crostolo  
Reggio Emilia - Italy  
Tel. +39 0522 601 801  
Fax +39 0522 606 226 / 601 802  
compact-hydraulics-cdv@boschrexroth.com  
www.boschrexroth.com/compacthydraulics

© This document, as well as the data, specifications and other information set forth in it, are the exclusive property of Bosch Rexroth Oil Control S.p.a.. It may not be reproduced or given to third parties without its consent. The data specified above only serve to describe the product. No statements concerning a certain condition or suitability for a certain application can be derived from our information. The information given does not release the user from the obligation of own judgment and verification. It must be remembered that our products are subject to a natural process of wear and aging.  
Subject to change.