

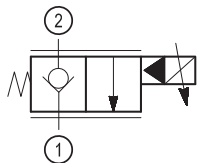
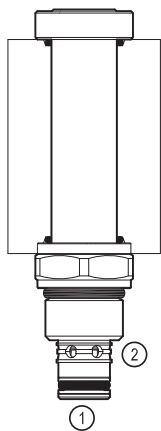
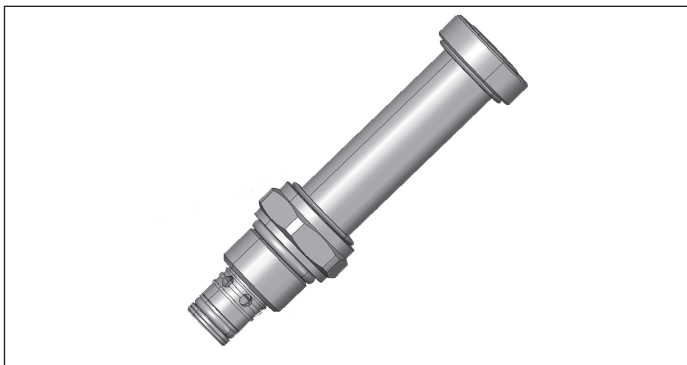
Proportional valves 2-way  
normally closed  
Common cavity, Size 08

VPR-P40 Coil R7-VPR

V389681 - Z

**RE 18323-78**

Edition: 08.2019



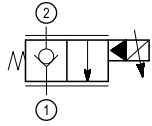
**Technical data**

| <b>General</b>   |   |
|--|---|
| Weight   | 0.20 kg (0.45 lbs)  |
| Installation orientation   | Optional  |
| Ambient temperature range  | -30 to 60 °C (-22 to 140 °F)  |
| <b>Hydraulic</b>   |   |
| Max. operating pressure  | 250 bar (3600 psi)  |
| Flow range   | 1 - 40 l/min. (0.3 - 11 gpm)  |
| Max. internal leakage  | 1 cm <sup>3</sup> /min. (0.1 cu.in./min.)                                 |
| Fluid temperature range  | -20 to 80 °C (-4 to 176 °F)   |
| Fluids: Mineral-based or synthetics with lubricating properties at viscosities of 15 to 380 mm <sup>2</sup> /s (cSt) |   |
| Installation torque  | 42 -48 Nm (31 - 36 ft-lbs)  |
| Recommended degree of fluid contamination  | Nominal value max. 10 µm (NAS 8) ISO 4406 19/17/14                        |
| Common cavity  | CA-08A-2N see 18325-70  |
| Lines bodies and standard assemblies   | Please refer to section "Hydraulic integrated circuit" or consult factory |
| Other technical data   | See data sheet 18350-50   |
| <b>Electrical</b>  |   |
| Type of voltage  | DC voltage  |
| Coil type  | R7-VPR  |
| Supply voltage   | 12 and 24   |
| Nominal voltage  | ± 10%   |
| Power consumption  | 20 W  |
| Duty cycle coil  | 100   |
| Note: Coils must be ordered separately   |   |

**Ordering code**

|                |          |
|----------------|----------|
| <b>V389681</b> | <b>*</b> |
|----------------|----------|

Proportional valves 2-way  
double lock normally closed



A20 = Standard type  
E20 = Knob style manual override

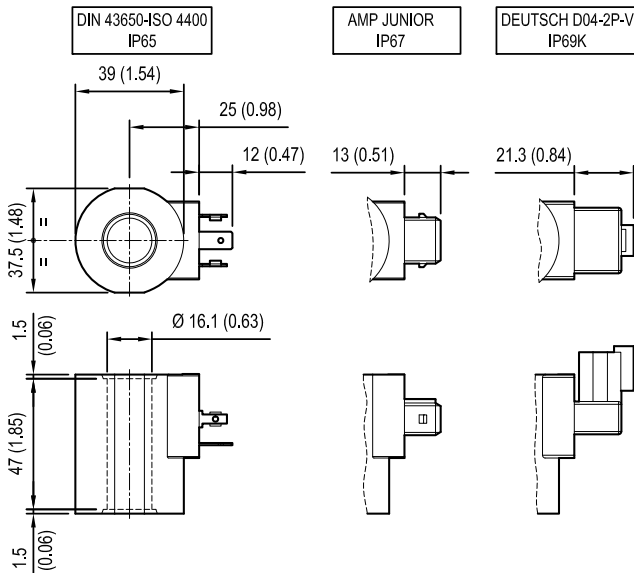
Common cavity: CA-08A-2N

**Preferred types**

| Type       | Material number |
|------------|-----------------|
| V389681A20 | R930075522      |
| V389681E20 | R930075523      |
|            |                 |
|            |                 |
|            |                 |

| Type | Material number |
|------|-----------------|
|      |                 |
|      |                 |
|      |                 |
|      |                 |
|      |                 |

**Coil R7-VPR**



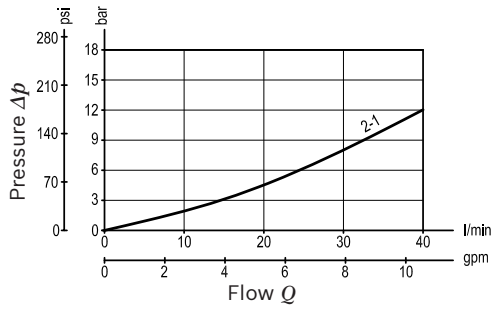
**TECHNICAL DATA**

Weight: 0.31 kg (0.71 lbs)  
Heat insulation Class H: 180°C (356°F)  
Ambient temperature range: -30/+80°C (-22/+284°F)  
Inlet voltage fluctuations must not exceed ±15% of nominal voltage to obtain correct operation and long life coils.

| R-number   | Conn. | Voltage V | Resistance Ohm | Current A I max |
|------------|-------|-----------|----------------|-----------------|
| R930075748 | DIN   | 12        | 6.7            | 1.7             |
| R932000790 | DIN   | 24        | 21.7           | 1.1             |
| R932008695 | AMP J | 12        | 6.7            | 1.7             |
| R930040824 | AMP J | 24        | 21.7           | 1.1             |
| R930075749 | DTV   | 12        | 6.7            | 1.7             |
| R930075750 | DTV   | 24        | 21.7           | 1.1             |

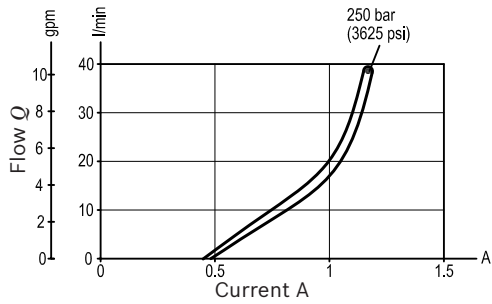
**Characteristic curves**

**Wide open pressure drop**



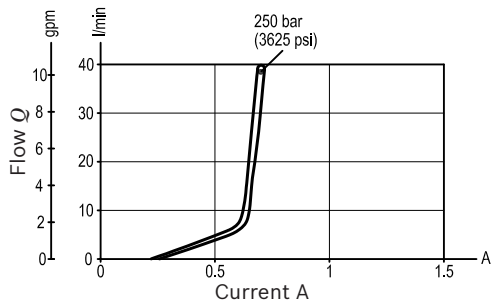
**Flow vs. Current at various differential pressures**

12V  
I max. 1.7A



| P bar (psi) | I (A) min. |
|-------------|------------|
| 50 (725)    | 0.45 ± 0.1 |
| 150 (2175)  | 0.50 ± 0.1 |
| 250 (3625)  | 0.55 ± 0.1 |

24V  
I max. 1.1A



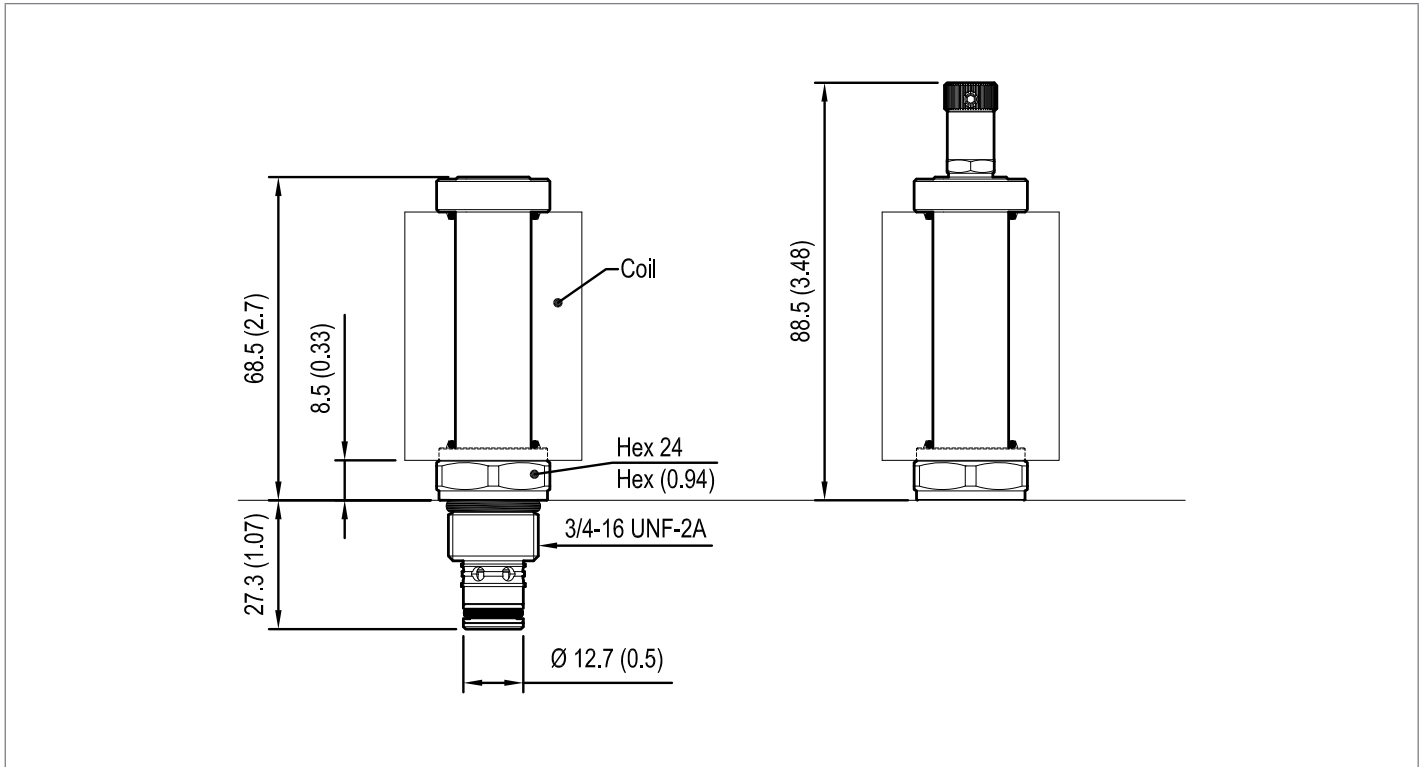
| P bar (psi) | I (A) min.  |
|-------------|-------------|
| 50 (725)    | 0.25 ± 0.05 |
| 150 (2175)  | 0.30 ± 0.05 |
| 250 (3625)  | 0.35 ± 0.05 |

PWM Frequency: 120-150 Hz  
Hysteresis: < 10%

Note: Performance using coil without diode.

**Dimensions**

## ▼ Proportional valves 2-way

**Bosch Rexroth Oil Control S.p.A.**

Via Leonardo da Vinci 5  
P.O. Box no. 5  
41015 Nonantola – Modena, Italy  
Tel. +39 059 887 611  
Fax +39 059 547 848  
compact-hydraulics-cv@boschrexroth.com  
www.boschrexroth.com/compacthydraulics

© This document, as well as the data, specifications and other information set forth in it, are the exclusive property of Bosch Rexroth Oil Control S.p.a.. It may not be reproduced or given to third parties without its consent. The data specified above only serve to describe the product. No statements concerning a certain condition or suitability for a certain application can be derived from our information. The information given does not release the user from the obligation of own judgment and verification. It must be remembered that our products are subject to a natural process of wear and aging. Subject to change.