

Model Code:

VALVE MODEL WS06ZR-01 M - C - N - 24 - DN

VERRIDE OPTION
 blank = No manual override
 M = Manual override screw type (Turn CW to Override)

ODY & PORTS
 C = Cartridge only
 AS4 = SAE-4 Ports, Aluminum Body
 SS4 = SAE-4 Ports, Steel Body

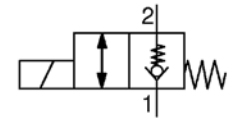
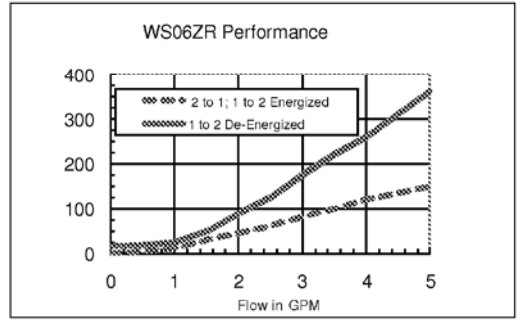
SEALS
 N = Buna-N
 V = Viton™

COIL VOLTAGE
 DC [12 = 12 VDC
 24 = 24 VDC
 AC [115 = 105 VDC (only available with connector DG)
 230 = 205 VDC (only available with connector DG)
 (All model 32-1329 coils are DC. AC models require an external diode bridge mounted outside the coil)**

COIL CONNECTOR
 DC [DG = DIN 43650 Form B (IP65 Rated)**
 DL = Leadwires (2) - 18\"/>

Specifications:

| | |
|-------------------------------------|---|
| Operating Pressure | 5000 psi (350 bar) |
| Nominal Flow | 3.5 gpm at 5000 psi (13.3 l/min @ 350 bar) |
| Internal Leakage | Leaktight (Less than 5 drops/min. @ 5000 psi) (0.25 cc/min at 350 bar) |
| Fluid Operating Temp Range | -20° to +248°F (-29° to +120°C) |
| Ambient Temperature Range | -20° to +140°F (-29° to +60°C) |
| Coil Duty Rating | Continuous from 85% to 115% of Nominal Voltage |
| Current Draw at 68°F (20°C) | 984 mA at 12VDC; 492 mA at 24VDC |
| Min. Pull-in Current at 68°F (20°C) | 70% of Nominal Amperage at 3000 psi (210 bar) |
| Fluid Compatibility | Mineral-Based or Synthetics with lubricating properties. |
| Viscosity | 50 to 2000 SUS (7.4 to 420 cSt) |
| Filtration | 21/19/16 or cleaner per (ISO 4406) |
| Installation | No Orientation Restrictions |
| Cavity | FC06-2 per cavity dwg 02582031 |
| Cavity Tools | Rougher part no. 02582046 Finisher part no. 02582047 |
| Cartridge Weight | 2.7 oz (75 grams) |
| Coil Weight | 3.1 oz (88 grams) |
| Cartridge Material | Steel with hardened work surfaces. Zinc plated exposed surfaces. Buna N or Viton™ o-rings. Solid Thermoplastic Polyester back-up rings. |
| Coil Material | Class N, 200°C high temperature magnet wire. Steel shell, Polyester encapsulation. |
| Seal Kits | Buna-N FS062-N P/N: 02610184 Viton™ FS062-V P/N: 02610185 |



COIL CONNECTOR
 DC [DG = DIN 43650 Form B (IP65 Rated)**
 DL = Leadwires (2) - 18\"/>

COIL MODEL 32-1329
 For other coil connector types consult factory

| | | | |
|-----|---------------|----------|-----|
| REV | CHANGE NUMBER | DATE | BY |
| A | 0 | 12-05-09 | RJH |

Standard Line Bodies:**

| Code | Part No. | Description | Pressure Rating | Weight |
|-----------|----------|--------------------|--------------------|--------------------|
| FH062-AS4 | 02600491 | Aluminum, anodized | 3500 psi (245 bar) | 0.34 lbs (0.15 kg) |
| FH062-SS4 | 02600490 | Steel, Zinc plated | 6000 psi (420 bar) | 1.0 lbs (0.45 kg) |

**Please refer to pages ---- for line body details

| | | | |
|--|---------------|----------|---------------|
| MATERIAL PER ASSY DWG 02600791 | DATE 12-16-08 | NAME JAS | DATE 12-16-08 |
| EXPERIMENTAL DRAWING | DRAWN RJH | 12-06-09 | |
| PRODUCTION RELEASED DRAWING | CHECKED RJH | 12-06-09 | |
| APPROVED CMW | 12-06-09 | | |
| PROPRIETARY DRAWING - Distribution, reproduction or disclosure of information pertaining to this drawing or design to any party other than those directly availing with HYDAC is strictly prohibited without the written consent of HYDAC. | SCALE | WEIGHT | SHEET 1 OF 1 |

HYDAC Hydraulic Division
 Glendale Heights, Illinois, USA

WS06ZR-01-C-N-0
 Pilot Op. Poppet Valve-N/C

Part No. **02610333** A